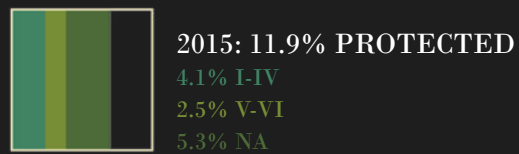


TUMBES - CHOCO - MAGDALENA

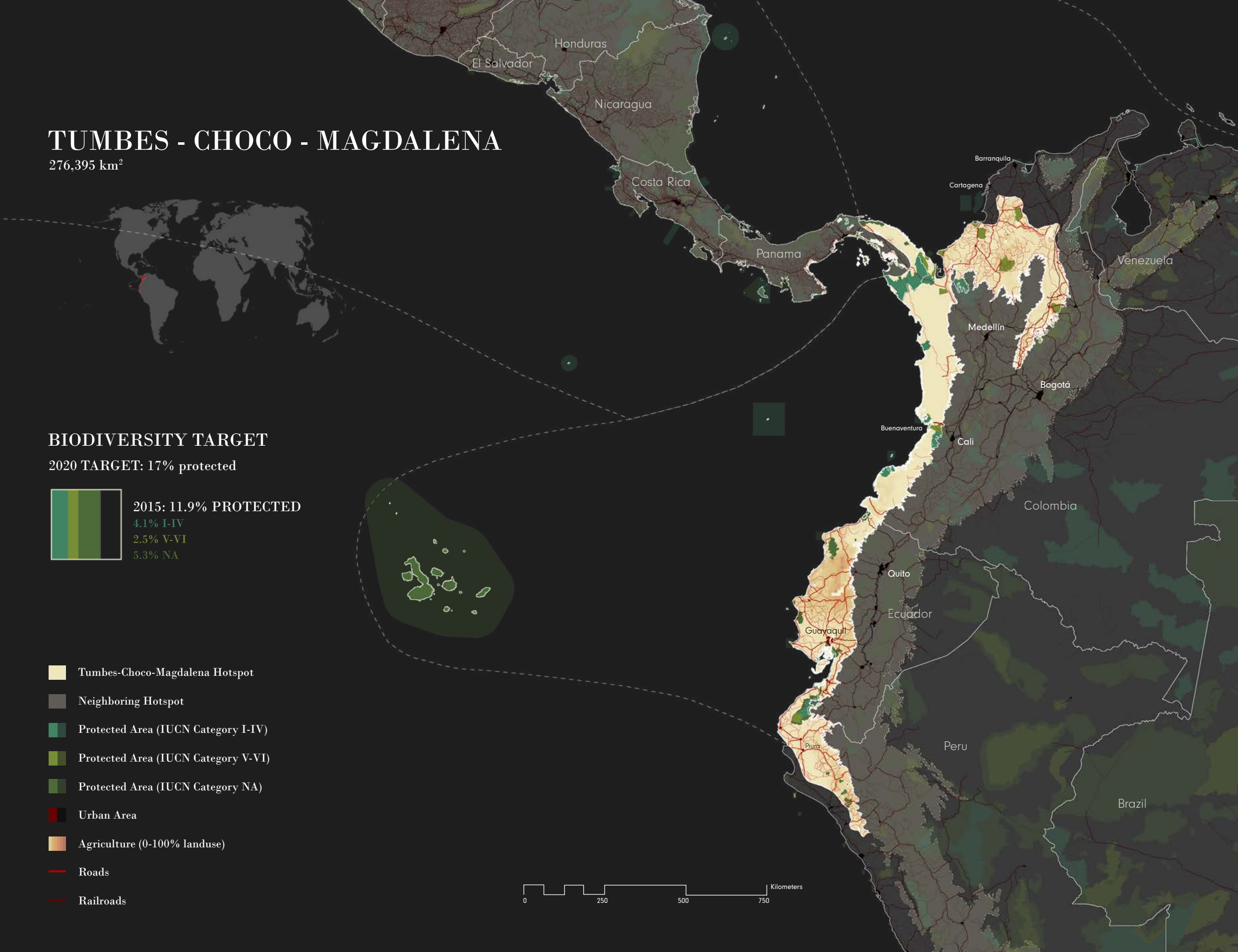
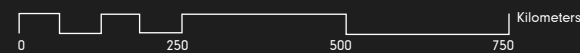
276,395 km²

BIODIVERSITY TARGET

2020 TARGET: 17% protected

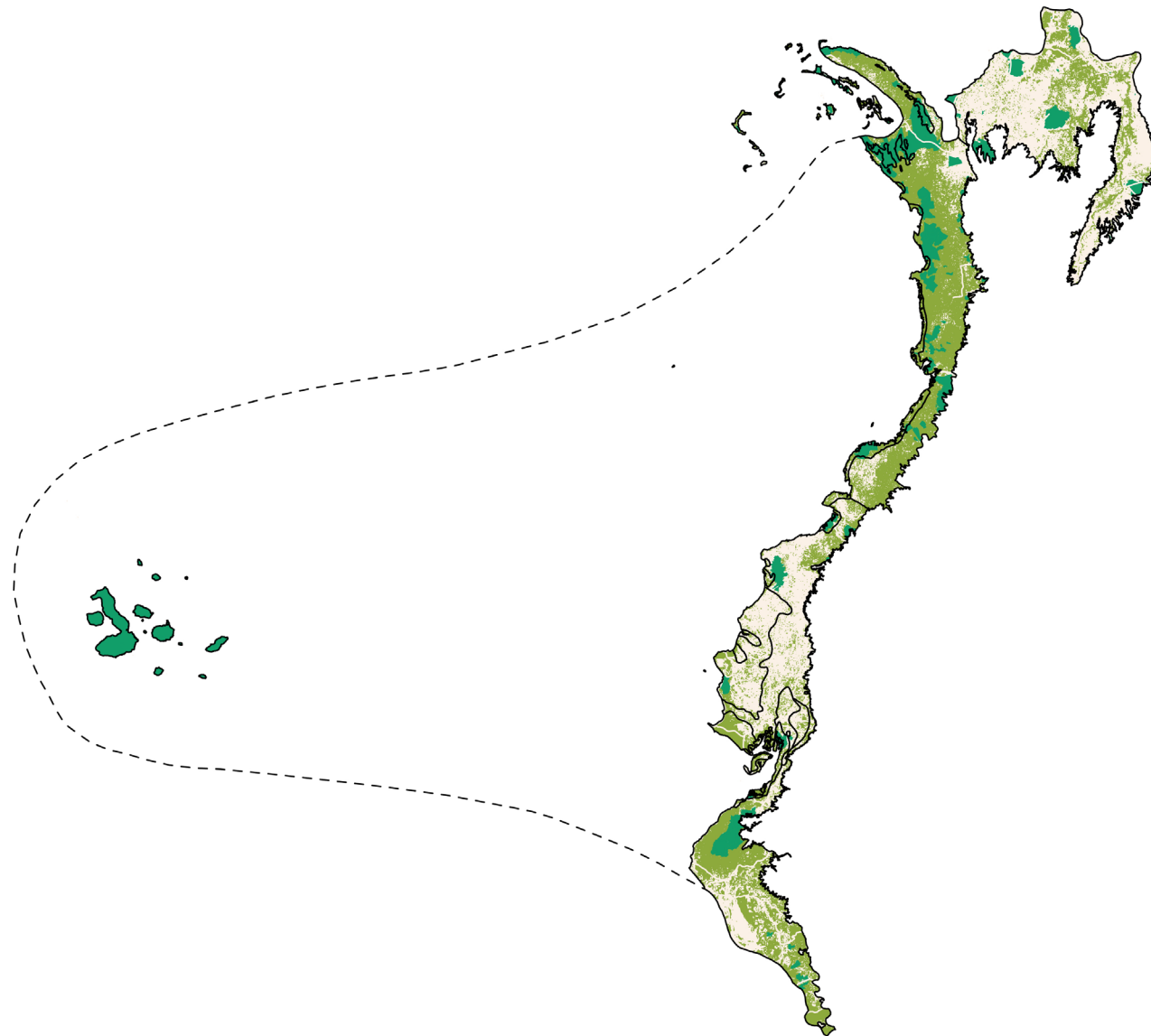


- Tumbes-Choco-Magdalena Hotspot
- Neighboring Hotspot
- Protected Area (IUCN Category I-IV)
- Protected Area (IUCN Category V-VI)
- Protected Area (IUCN Category NA)
- Urban Area
- Agriculture (0-100% landuse)
- Roads
- Railroads



TUMBES-CHOCO-MAGDALENA ECOREGIONS

Shortfall Assessment to reach Target of 17% protected land in each terrestrial ecoregion



Colombia, Ecuador, Panama, Peru

5 BIOMES

Deserts & Xeric Shrublands

Flooded Grasslands & Savannas

Mangroves

Montane Grasslands & Shrublands

Tropical & Subtropical Moist Broadleaf Forests

Tropical & Subtropical Dry Broadleaf Forests

10 ECOREGIONS

ENDEMIC PLANT SPECIES

2,750

ENDEMIC ANIMAL SPECIES

364

1. South American Pacific Mangroves

6,200 km² remnant habitat

Target reached



3. Eastern Panamanian Montane Forests

336 km² remnant habitat

Target reached



7. Guayaquil Flooded Grasslands

717 km² remnant habitat

To reach Aichi Target of 17%

+439 km² protected areas

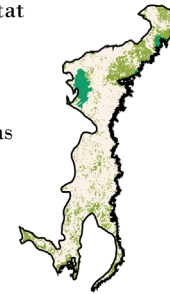


4. Western Ecuador Moist Forests

8,151 km² remnant habitat

To reach Aichi Target of 17%

+4,247 km² protected areas

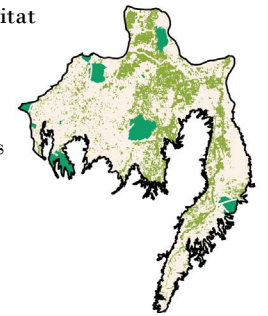


8. Magdalena-Urabá Moist Forests

15,630 km² remnant habitat

To reach Aichi Target of 17%

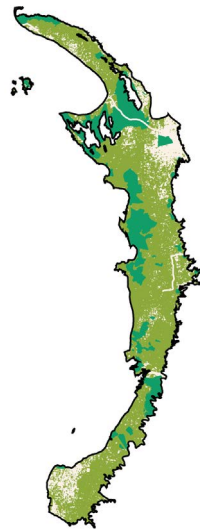
+7,864 km² protected areas



2. Chocó-Darién Moist Forests

44,845 km² remnant habitat

Target reached



5. Ecuadorian Dry Forests

6,694 km² remnant habitat

To reach Aichi Target of 17%

+3,116 km² protected areas



9. Malpelo Island Xeric Scrub

Target reached

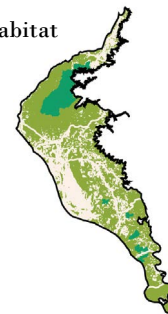
.

6. Tumbes-Piura Dry Forests

23,848 km² remnant habitat

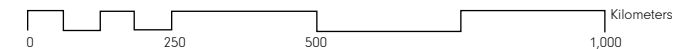
To reach Aichi Target of 17%

+3,413 km² protected areas



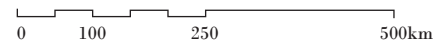
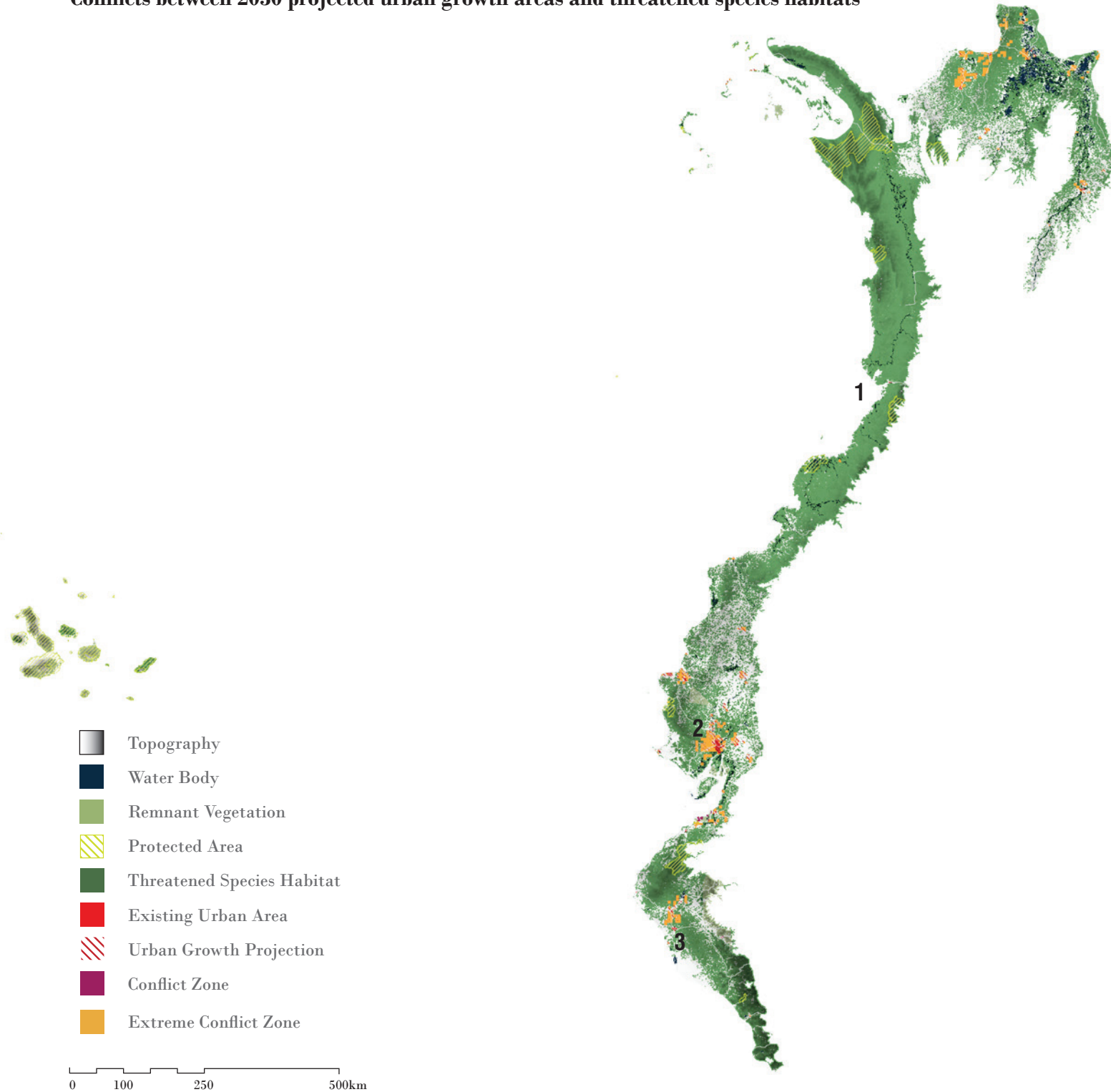
10. Galapagos Islands Scrubland Mosaic

Target reached



TUMBES-CHOCO-MAGDALENA | CONFLICTS

Conflicts between 2030 projected urban growth areas and threatened species habitats



3,566,000 Population

2015 URBAN POPULATION

4,613,000

2030 URBAN POPULATION

93

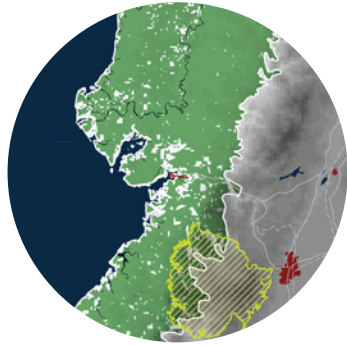
THREATENED SPECIES

MAJOR CROPS

maize, sugar cane, rice, oil palm fruit, cocoa beans

BIODIVERSITY THREATS

Deforestation
Settlement
Timber Extraction
Cattle Ranching
Intensive Agriculture



1. BUENAVENTURA, COLOMBIA

POPULATION PROJECTIONS:

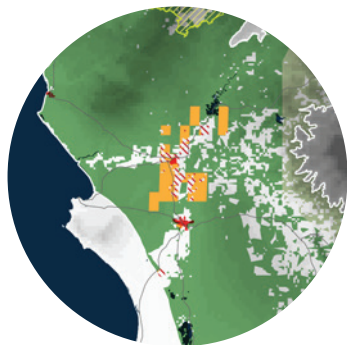
<u>2015:</u>	<u>2030:</u>
2,646,000	3,203,000



2. GUAYAQUIL, ECUADOR

POPULATION PROJECTIONS:

<u>2015:</u>	<u>2030:</u>
2,709,000	3,493,000



3. PIURA, PERU

POPULATION PROJECTIONS:

<u>2015:</u>	<u>2030:</u>
2,709,000	3,493,000

-  Topography
-  Water Body
-  Remnant Vegetation
-  Protected Area
-  Threatened Species Habitat
-  Existing Urban Area
-  Urban Growth Projection
-  Conflict Zone
-  Extreme Conflict Zone