

# TROPICAL ANDES

1,656,935 km<sup>2</sup>

## BIODIVERSITY TARGET

2020 TARGET: 17% protected



2015: 23.8% PROTECTED

5.4% I-IV

6.4% V-VI

12% NA

- Tropical Andes Hotspot
- Neighboring Hotspot
- Protected Area (IUCN Category I-IV)
- Protected Area (IUCN Category V-VI)
- Protected Area (IUCN Category NA)
- Urban Area
- Agriculture (0-100% landuse)
- Roads
- Railroads



# TROPICAL ANDES ECOREGIONS

Shortfall Assessment to reach Target of 17% protected land in each terrestrial ecoregion



Argentina, Bolivia, Chile, Colombia, Ecuador, Peru, Venezuela

## 8 BIOMES

Deserts & Xeric Shrublands

Flooded Grasslands & Savannas

Mangrove

Mediterranean Forests, Woodlands & Scrub

Montane Grasslands & Shrublands

Tropical & Subtropical Dry Broadleaf Forests

Tropical & Subtropical Grasslands, Savannas, & Shrublands

Tropical & Subtropical Moist Broadleaf Forests

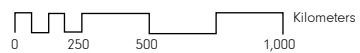
## 23 ECOREGIONS

### ENDEMIC PLANT SPECIES

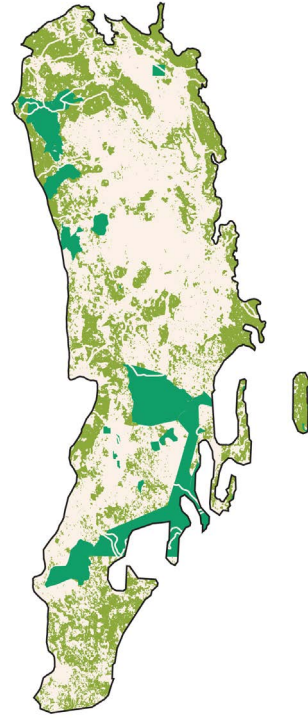
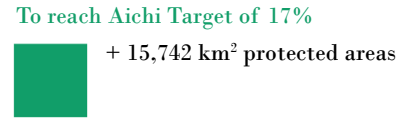
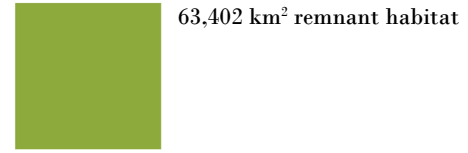
15,000

### ENDEMIC ANIMAL SPECIES

1,733



### 1. Central Andean Dry Puna



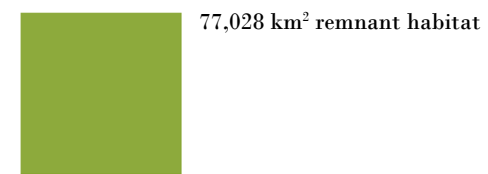
### 3. Central Andean Puna



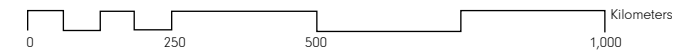
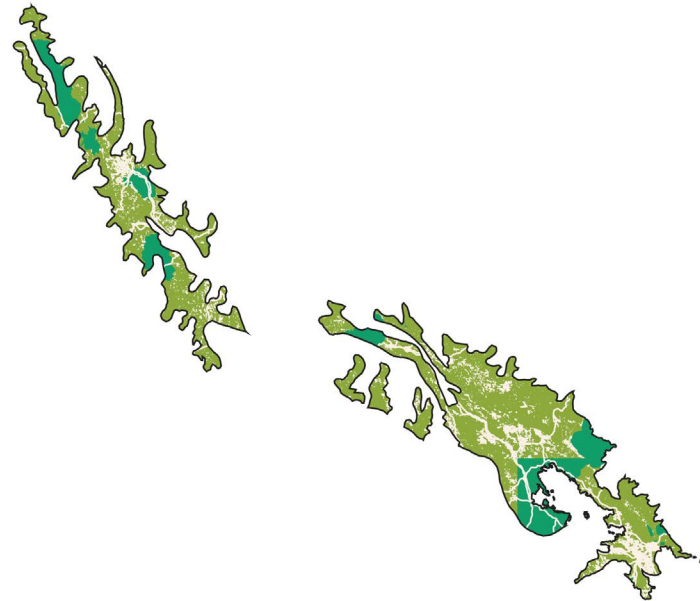
Target reached



### 2. Central Andean Wet Puna



Target reached

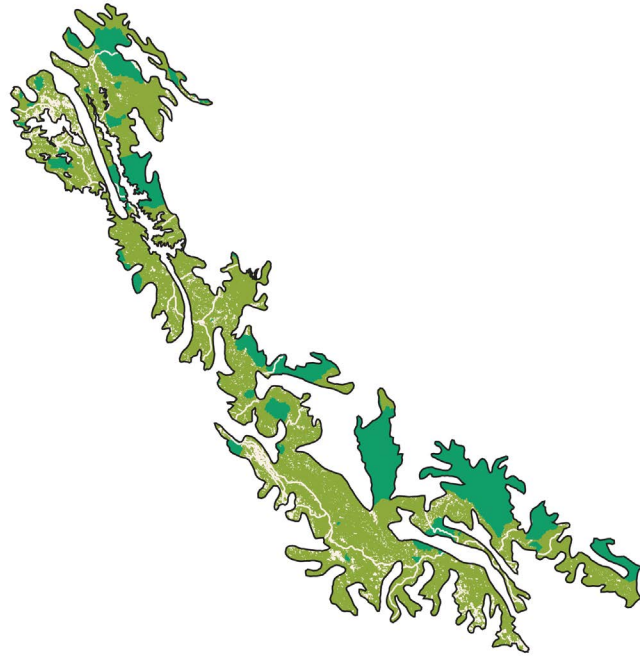


#### 4. Peruvian Yungas



127,835 km<sup>2</sup> remnant habitat

Target reached



#### 6. Northern Andean Páramo



11,860 km<sup>2</sup> remnant habitat

Target reached



#### 5. Southern Andean Yungas



66,164 km<sup>2</sup> remnant habitat

Target reached



#### 7. Northwestern Andean Montane Forests



32,074 km<sup>2</sup> remnant habitat

To reach Aichi Target of 17%

+807 km<sup>2</sup> protected areas

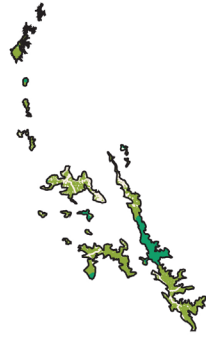


### 8. Cordillera Central Páramo

■ 8,295 km<sup>2</sup> remnant habitat

To reach Aichi Target of 17%

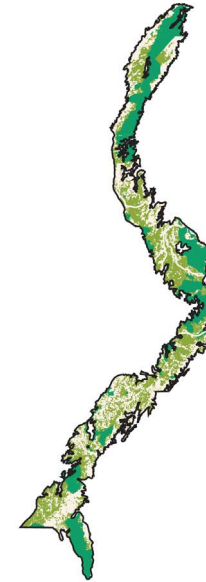
- +107 km<sup>2</sup> protected areas



### 11. Cordillera Oriental Montane Forests

■ 19,953 km<sup>2</sup> remnant habitat

Target reached



### 9. Cordillera de Maerida Páramo

■ 697 km<sup>2</sup> remnant habitat

Target reached



### 10. Cordillera La Costa Montane Forests

■ 3,682 km<sup>2</sup> remnant habitat

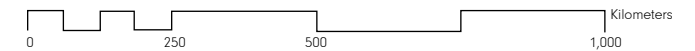
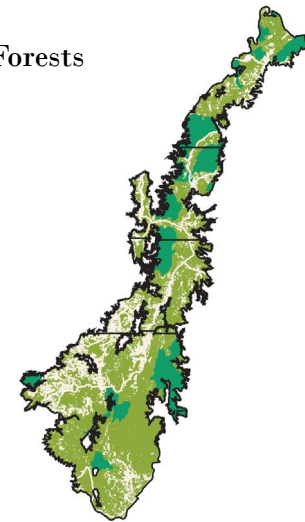
Target reached



### 12. Eastern Cordillera Real Montane Forests

■ 59,775 km<sup>2</sup> remnant habitat

Target reached



### 13. Bolivian Montane Dry Forests



72,501 km<sup>2</sup> remnant habitat

To reach Aichi Target of 17%



+ 9,193 km<sup>2</sup> protected areas



### 15. Magdalena Valley Dry Forests



5,519 km<sup>2</sup> remnant habitat

To reach Aichi Target of 17%



+ 2,965 km<sup>2</sup> protected areas

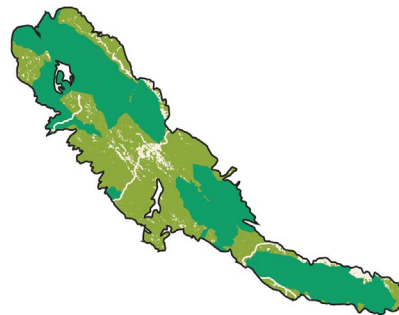


### 14. Bolivian Yungas



39,761 km<sup>2</sup> remnant habitat

Target reached



### 16. Magdalena Valley Montane Forests

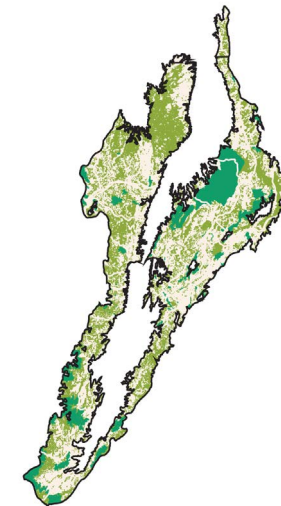


34,695 km<sup>2</sup> remnant habitat

To reach Aichi Target of 17%



+ 4,376 km<sup>2</sup> protected areas



### 17. Santa Marta Páramo

Target reached



### 18. Santa Marta Montane Forests

Target reached



### 19. Marañón Dry Forests

9,023 km<sup>2</sup> remnant habitat

To reach Aichi Target of 17%

+ 1,244 km<sup>2</sup> protected areas



### 20. Patía Valley Dry Forests

856 km<sup>2</sup> remnant habitat

To reach Aichi Target of 17%

+ 385 km<sup>2</sup> protected areas



### 21. Cauca Valley Dry Forests

2,666 km<sup>2</sup> remnant habitat

To reach Aichi Target of 17%

+ 1,207 km<sup>2</sup> protected areas



### 22. Cauca Valley Montane Forests

11,557 km<sup>2</sup> remnant habitat

To reach Aichi Target of 17%

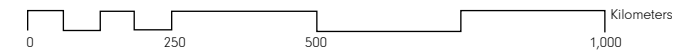
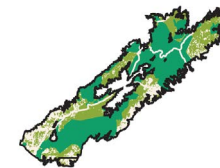
+ 2,203 km<sup>2</sup> protected areas



### 23. Venezuelan Andes Montane Forests

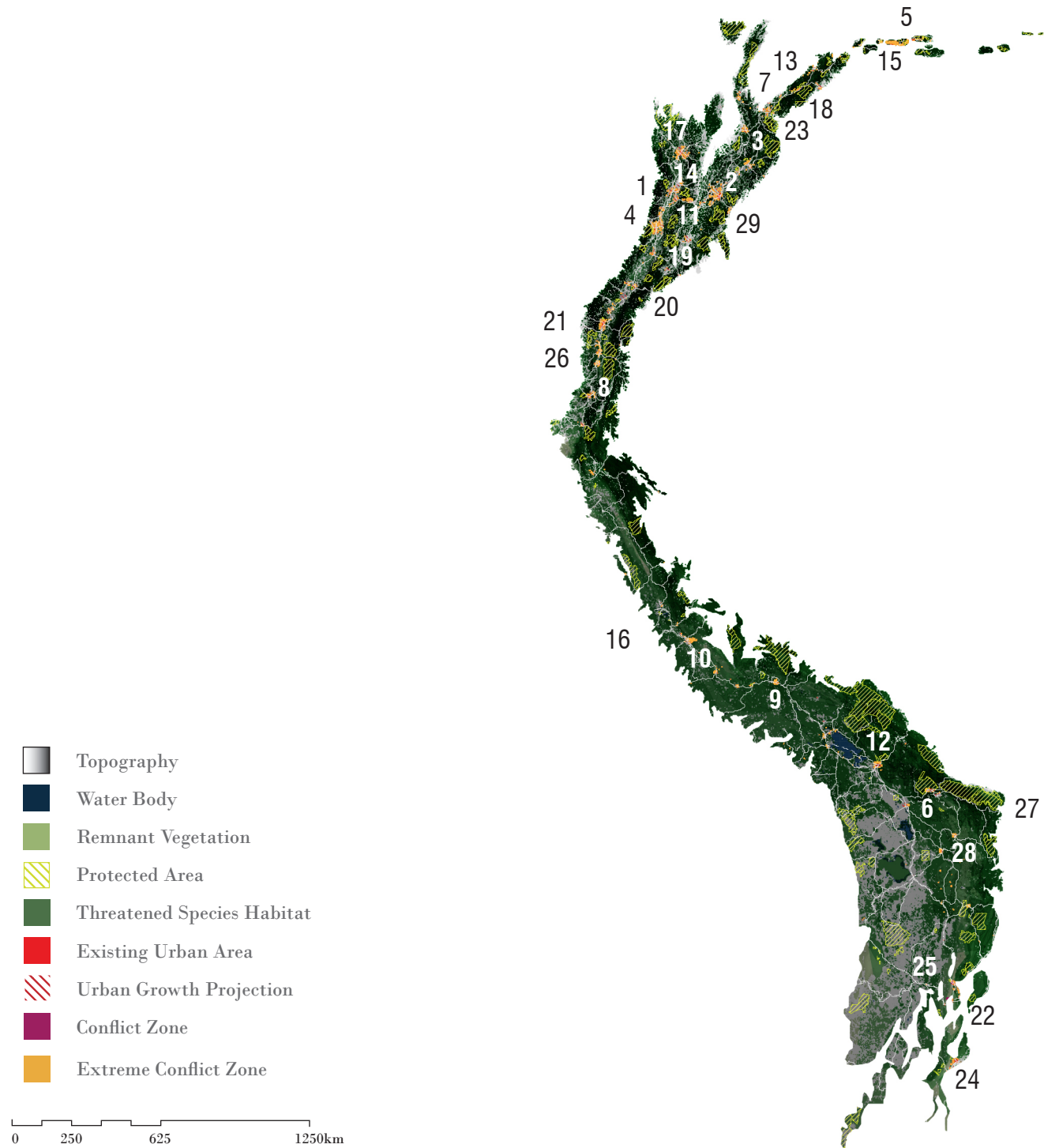
6,015 km<sup>2</sup> remnant habitat

Target reached



# TROPICAL ANDES | CONFLICTS

Conflicts between 2030 projected urban growth areas and threatened species habitats



34,672,000 Population

2015 URBAN POPULATION

42,940,000

2030 URBAN POPULATION

579

THREATENED SPECIES

MAJOR CROPS

rice, maize, potatoes, sugar cane, coffee

BIODIVERSITY THREATS

Agricultural Expansion

Hydrocarbon Extraction

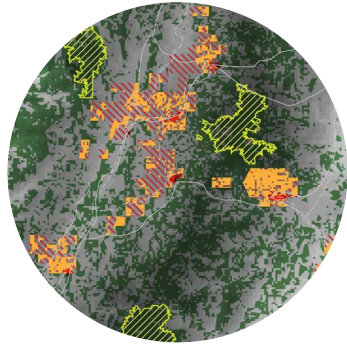
Infrastructure Development

Mining

Logging

Poaching

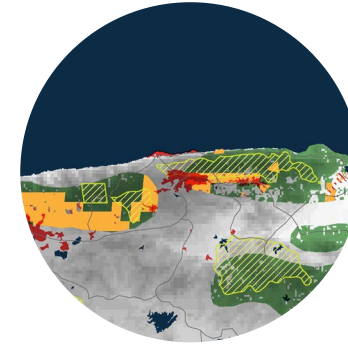




### 1. ARMENIA, COLOMBIA

POPULATION PROJECTIONS:

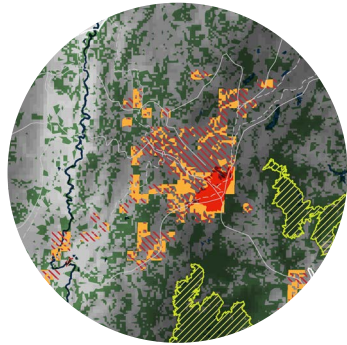
<u>2015:</u>	<u>2030:</u>
400,000	497,000



### 5. CARACAS, VENEZUELA

POPULATION PROJECTIONS:

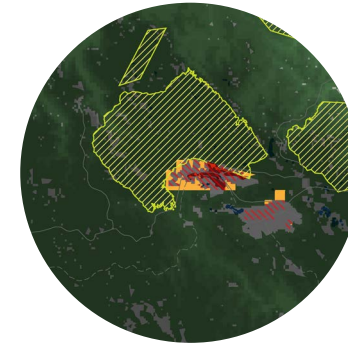
<u>2015:</u>	<u>2030:</u>
2,916,000	3,347,000



### 2. BOGOTA, COLOMBIA

POPULATION PROJECTIONS:

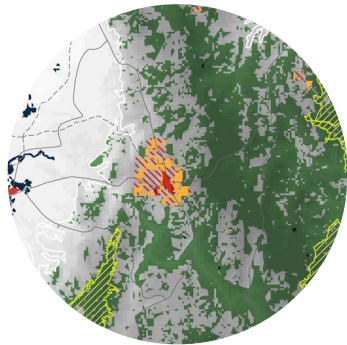
<u>2015:</u>	<u>2030:</u>
9,765,000	11,966,000



### 6. COCHABAMBA, BOLIVIA

POPULATION PROJECTIONS:

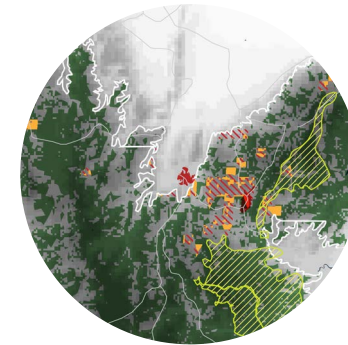
<u>2015:</u>	<u>2030:</u>
1,240,000	1,703,000



### 3. BUCARAMANGA, COLOMBIA

POPULATION PROJECTIONS:

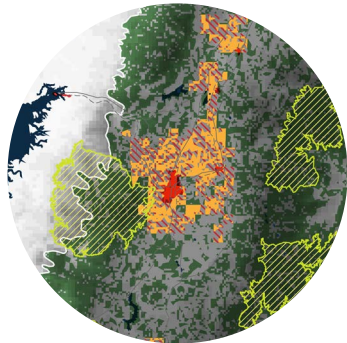
<u>2015:</u>	<u>2030:</u>
1,215,000	1,507,000



### 7. CUCUTA, COLOMBIA

POPULATION PROJECTIONS:

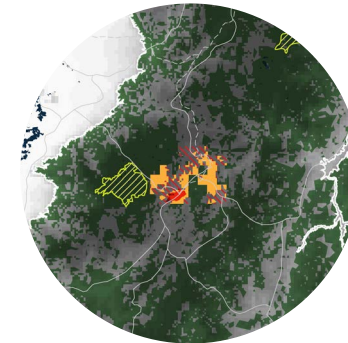
<u>2015:</u>	<u>2030:</u>
851,000	1,047,000



### 4. CALI, COLOMBIA

POPULATION PROJECTIONS:

<u>2015:</u>	<u>2030:</u>
2,646,000	3,203,000

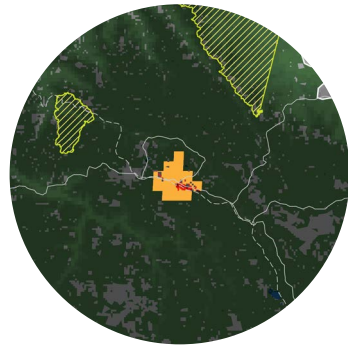


### 8. CUENCA, ECUADOR

POPULATION PROJECTIONS:

<u>2015:</u>	<u>2030:</u>
361,000	483,000

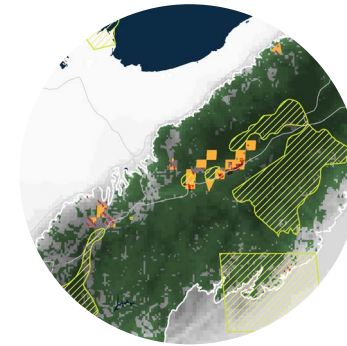




**9. CUSCO, PERU**

POPULATION PROJECTIONS:

<u>2015:</u>	<u>2030:</u>
412,000	536,000



**13. LAGUNILLAS, VENEZUELA**

POPULATION PROJECTIONS:

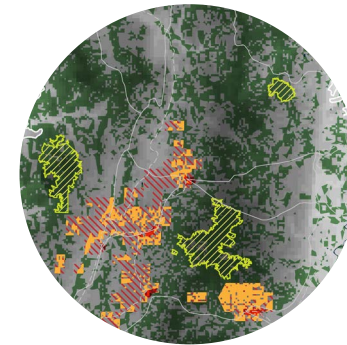
<u>2015:</u>	<u>2030:</u>
350,000	487,000



**10. HUANCAYO, PERU**

POPULATION PROJECTIONS:

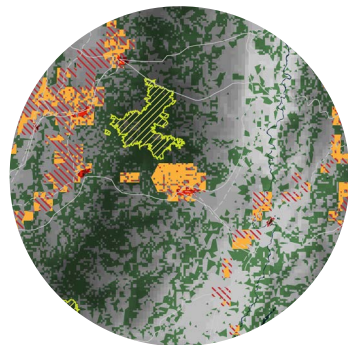
<u>2015:</u>	<u>2030:</u>
364,000	463,000



**14. MANIZALES, COLOMBIA**

POPULATION PROJECTIONS:

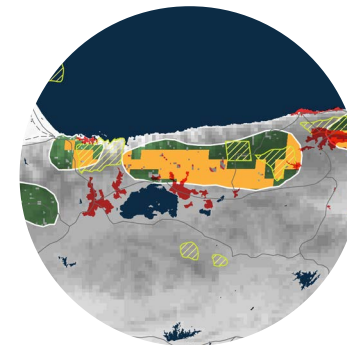
<u>2015:</u>	<u>2030:</u>
449,000	546,000



**11. IBAGUE, COLOMBIA**

POPULATION PROJECTIONS:

<u>2015:</u>	<u>2030:</u>
612,000	778,000

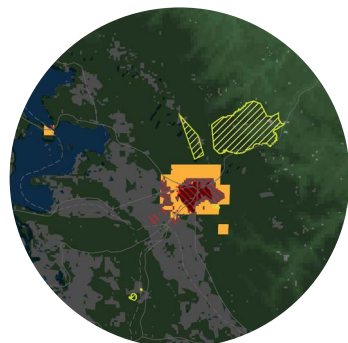


**15. MARACAY, VENEZUELA**

POPULATION PROJECTIONS:

<u>2015:</u>	<u>2030:</u>
1,166,000	1,450,000

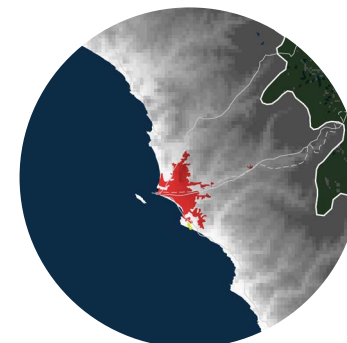
-  Topography
-  Water Body
-  Remnant Vegetation
-  Protected Area
-  Threatened Species Habitat
-  Existing Urban Area
-  Urban Growth Projection
-  Conflict Zone
-  Extreme Conflict Zone



**12. LA PAZ, BOLIVIA**

POPULATION PROJECTIONS:

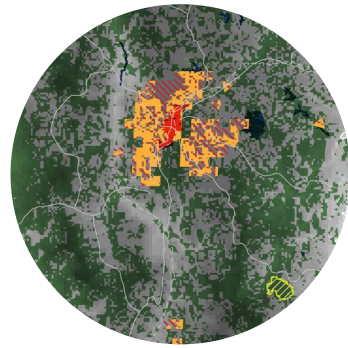
<u>2015:</u>	<u>2030:</u>
1,816,000	2,308,000



**16. LIMA, PERU**

POPULATION PROJECTIONS:

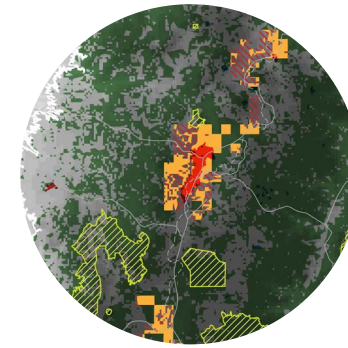
<u>2015:</u>	<u>2030:</u>
9,897,000	12,221,000



### 17. MEDELLIN, COLOMBIA

POPULATION PROJECTIONS:

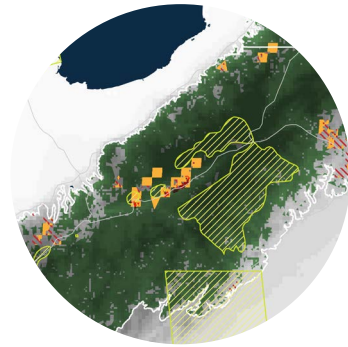
<u>2015:</u>	<u>2030:</u>
3,911,000	4,747,000



### 21. QUITO, ECUADOR

POPULATION PROJECTIONS:

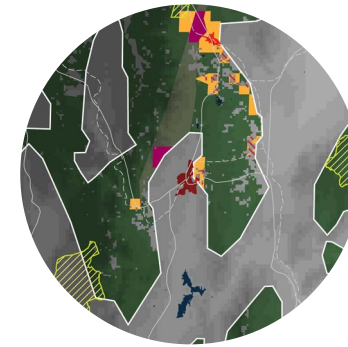
<u>2015:</u>	<u>2030:</u>
1,726,000	2,228,000



### 18. MERIDA, VENEZUELA

POPULATION PROJECTIONS:

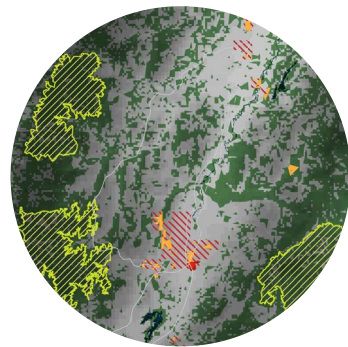
<u>2015:</u>	<u>2030:</u>
324,000	403,000



### 22. SALTA, ARGENTINA

POPULATION PROJECTIONS:

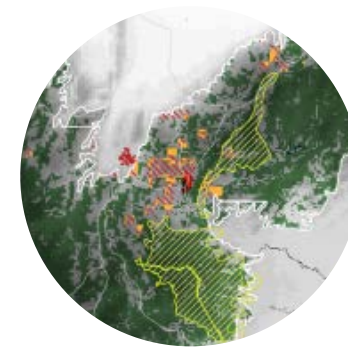
<u>2015:</u>	<u>2030:</u>
579,000	692,000



### 19. NEIVA, COLOMBIA

POPULATION PROJECTIONS:

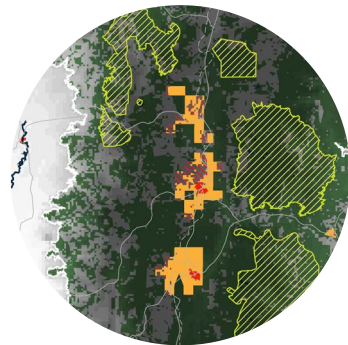
<u>2015:</u>	<u>2030:</u>
355,000	440,000



### 23. SAN CRISTOBAL, VENEZUELA

POPULATION PROJECTIONS:

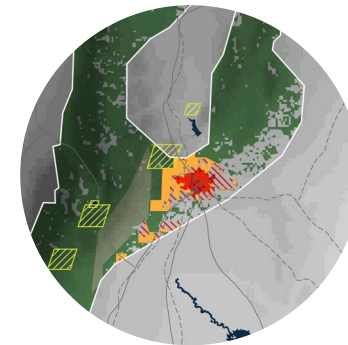
<u>2015:</u>	<u>2030:</u>
371,000	455,000



### 20. PASTO, COLOMBIA

POPULATION PROJECTIONS:

<u>2015:</u>	<u>2030:</u>
363,000	444,000



### 24. SAN MIGUEL DE TUCUMAN, ARGENTINA

POPULATION PROJECTIONS:

<u>2015:</u>	<u>2030:</u>
910,000	1,078,000

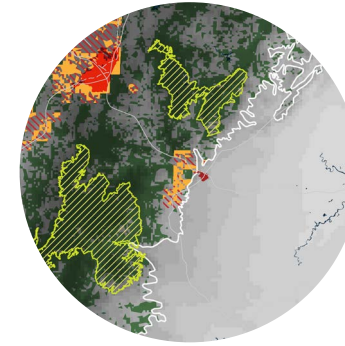
-  Topography
-  Water Body
-  Remnant Vegetation
-  Protected Area
-  Threatened Species Habitat
-  Existing Urban Area
-  Urban Growth Projection
-  Conflict Zone
-  Extreme Conflict Zone



**25. SAN SALVADOR DE JUJUY, ARGENTINA**

POPULATION PROJECTIONS:

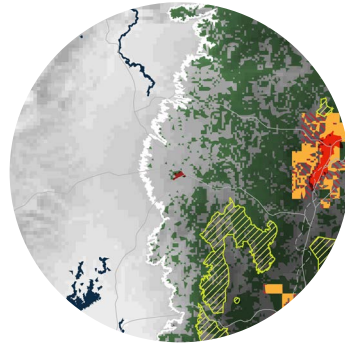
<u>2015:</u>	<u>2030:</u>
330,000	394,000



**29. VILLAVICENCIO, COLOMBIA**

POPULATION PROJECTIONS:

<u>2015:</u>	<u>2030:</u>
552,000	747,000



**26. SANTO DOMINGO, ECUADOR**

POPULATION PROJECTIONS:

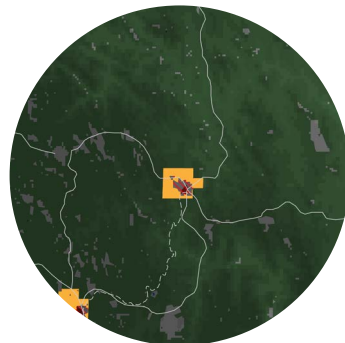
<u>2015:</u>	<u>2030:</u>
316,000	449,000



**27. SANTA CRUZ DE LA SIERRA, BOLIVIA**

POPULATION PROJECTIONS:

<u>2015:</u>	<u>2030:</u>
2,107,000	2,989,000



**28. SUCRE, BOLIVIA**

POPULATION PROJECTIONS:

<u>2015:</u>	<u>2030:</u>
372,000	542,000

-  Topography
-  Water Body
-  Remnant Vegetation
-  Protected Area
-  Threatened Species Habitat
-  Existing Urban Area
-  Urban Growth Projection
-  Conflict Zone
-  Extreme Conflict Zone