

# SUNDALAND

1,500,306 km<sup>2</sup>

## BIODIVERSITY TARGET

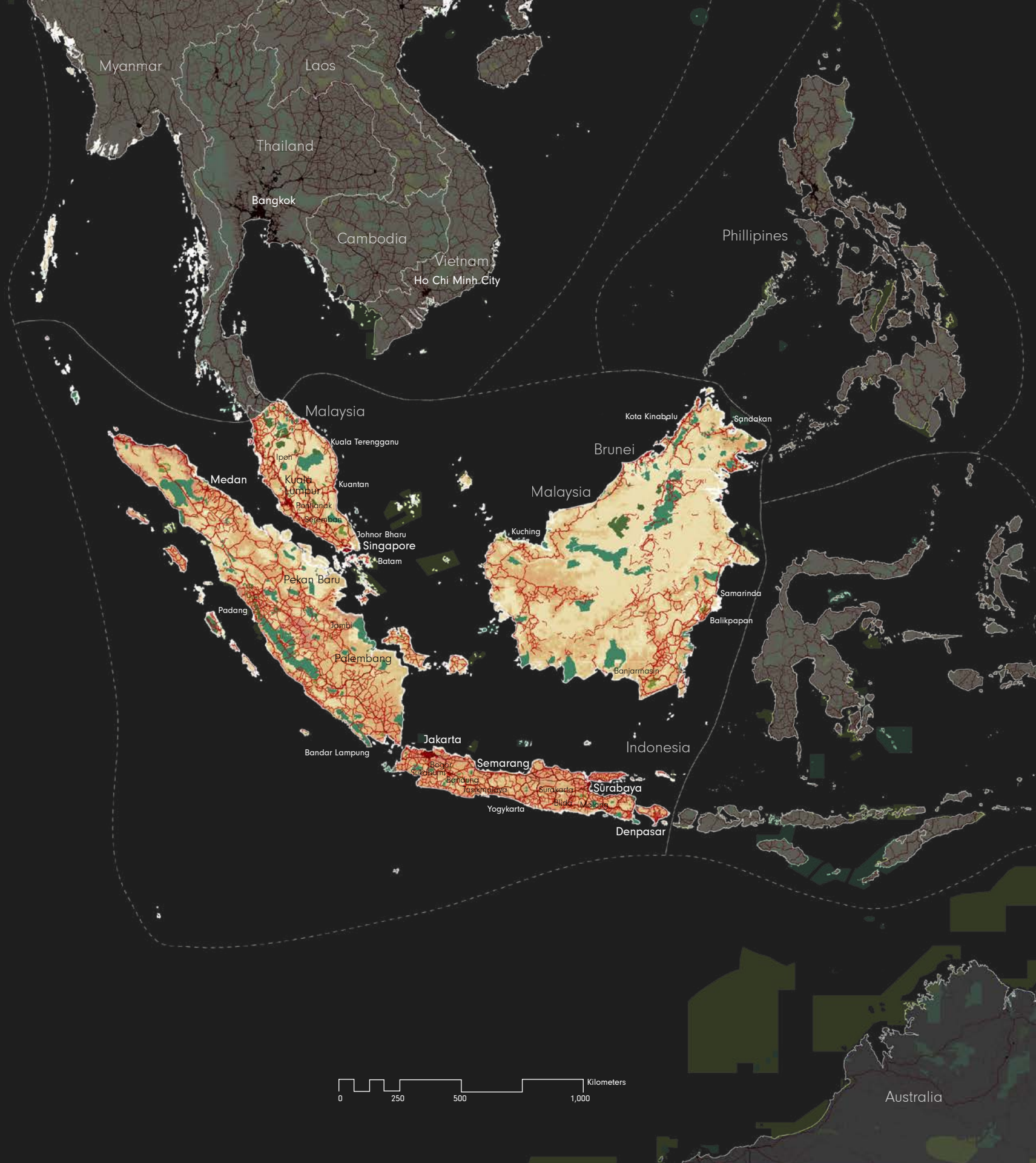
2020 TARGET: 17% protected



2015: 9.6% PROTECTED

7.9% I-IV  
1.5% V-VI  
1.2% NA

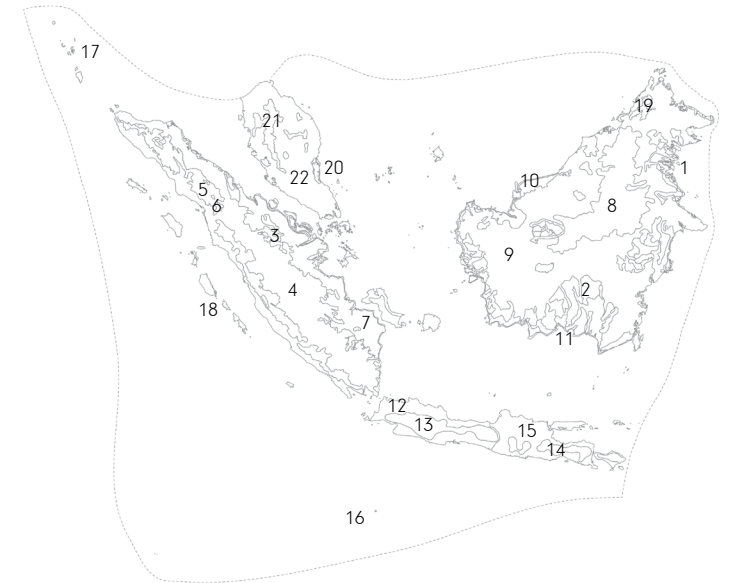
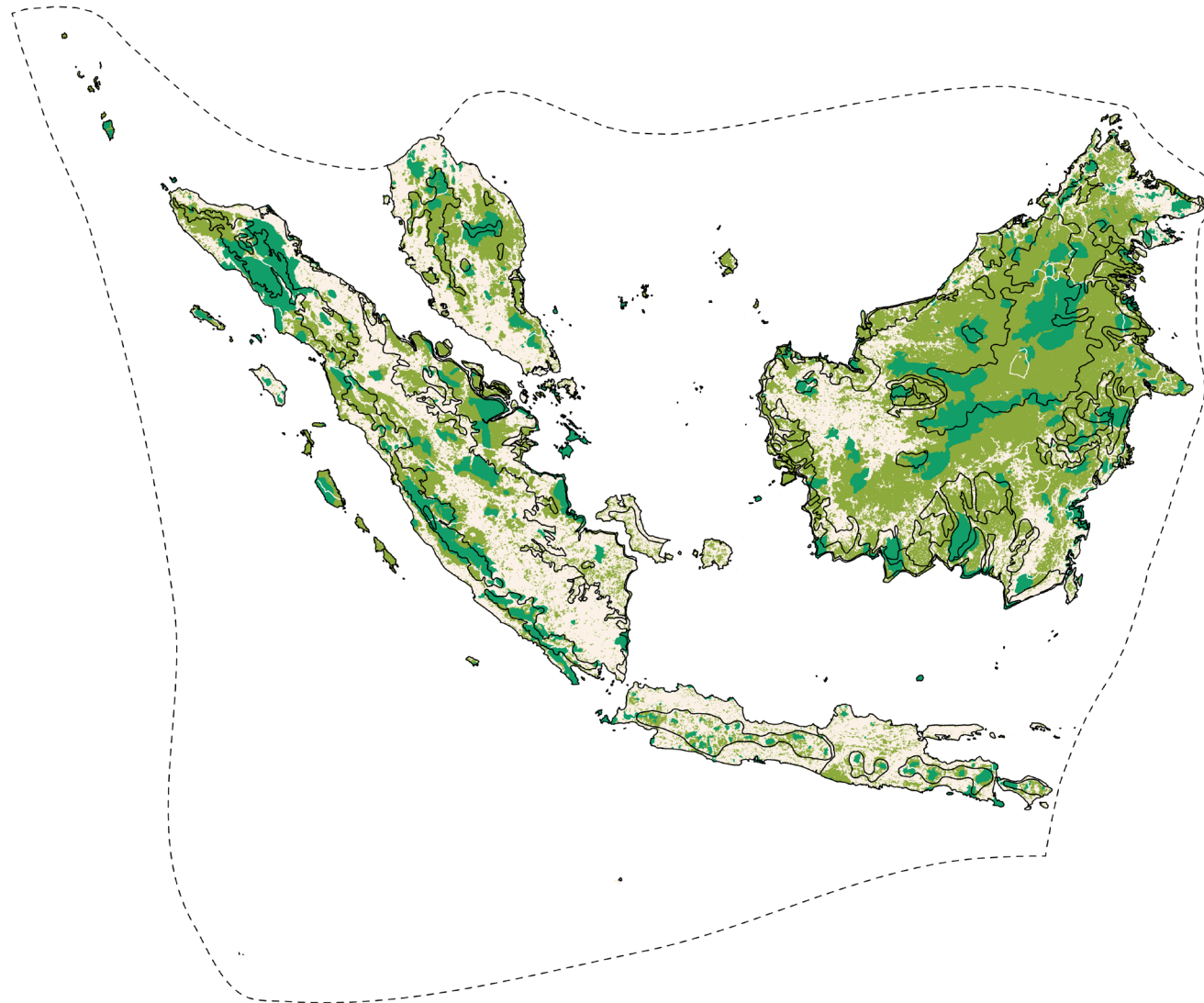
- Sundaland Hotspot
- Neighboring Hotspot
- Protected Area (IUCN Category I-IV)
- Protected Area (IUCN Category V-VI)
- Protected Area (IUCN Category NA)
- Urban Area
- Agriculture (0-100% landuse)
- Roads
- Railroads



Australia

# SUNDALAND ECOREGIONS

Shortfall Assessment to reach Target of 17% protected land in each terrestrial ecoregion



Indian Ocean Territories (Australia), Brunei, India, Indonesia, Malaysia, Thailand

## 3 BIOMES

Mangroves

Montane Grasslands & Shrublands

Tropical & Subtropical Moist Broadleaf Forests

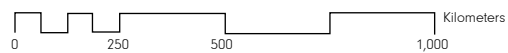
## 22 ECOREGIONS

## ENDEMIC PLANT SPECIES

15,000

## ENDEMIC ANIMAL SPECIES

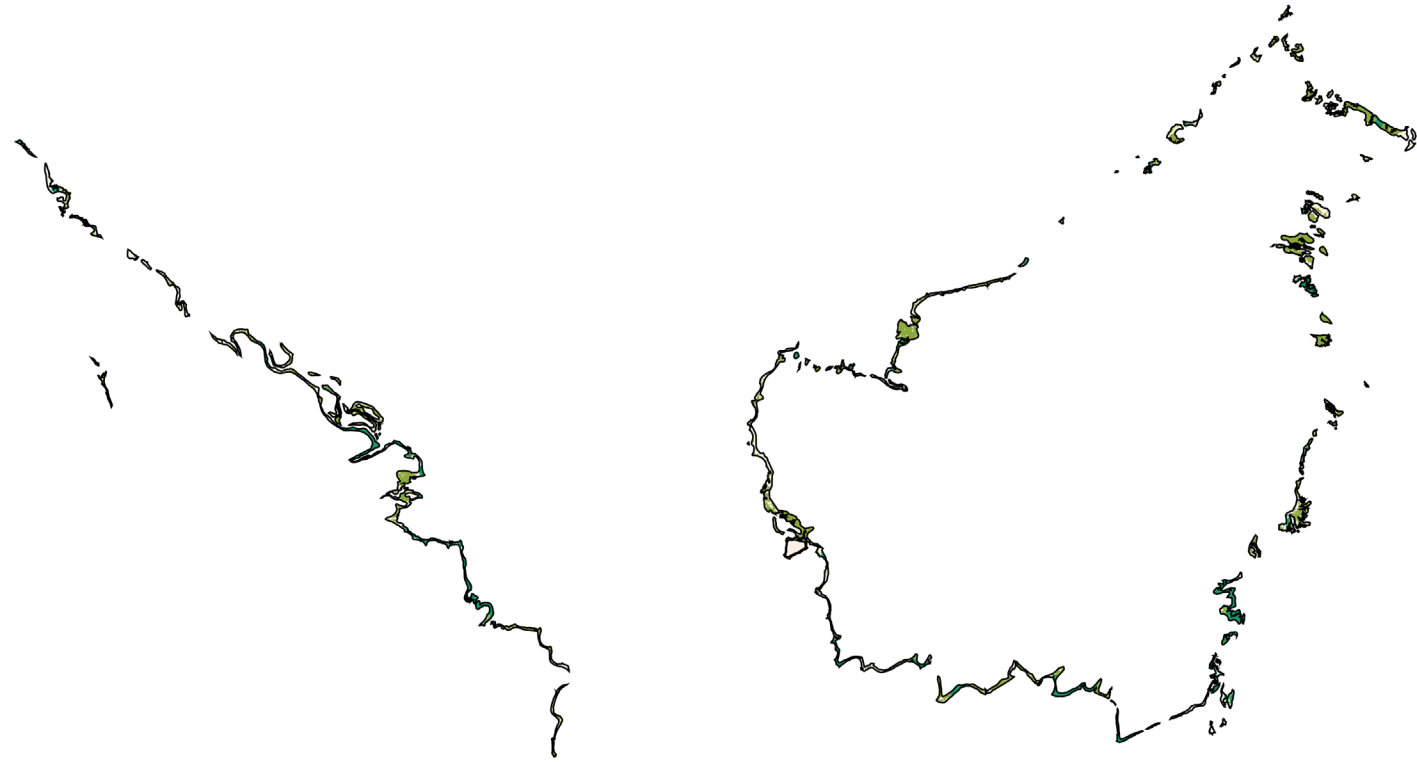
1,103



### 1. Sunda Shelf Mangroves

14,193 km<sup>2</sup> remnant habitat

Target reached

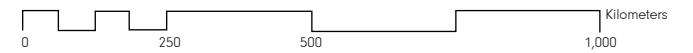


### 2. Sundaland Heath Forests

41,044 km<sup>2</sup> remnant habitat

To reach Aichi Target of 17%

+4,490 km<sup>2</sup> protected areas

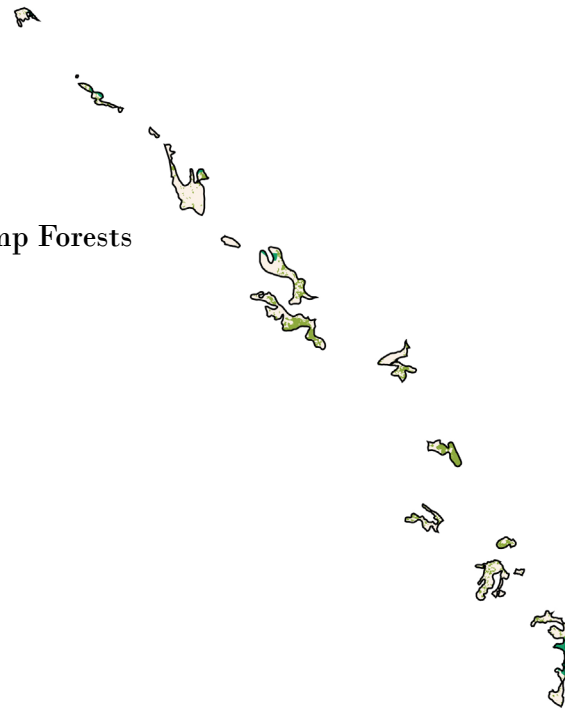


### 3. Sumatran Freshwater Swamp Forests

3,698 km<sup>2</sup> remnant habitat

To reach Aichi Target of 17%

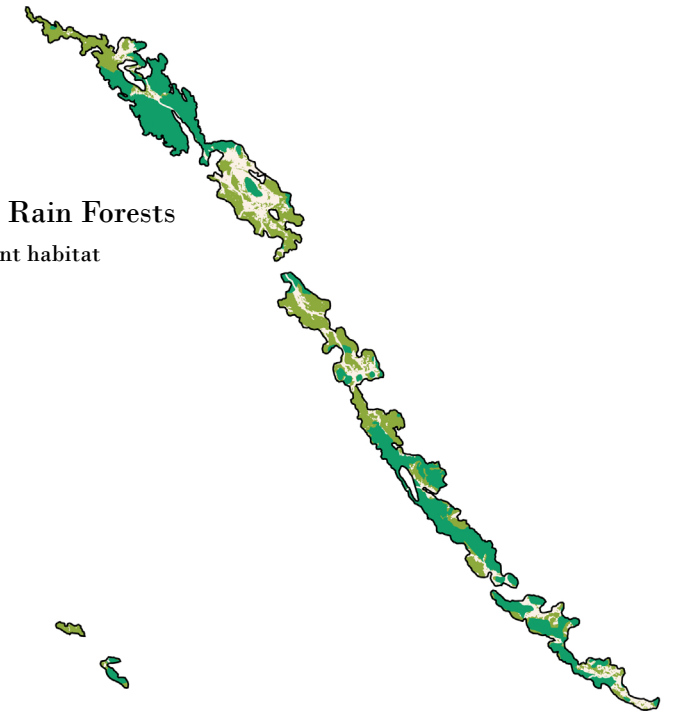
+2,303 km<sup>2</sup> protected areas



### 5. Sumatran Montane Rain Forests

22,777 km<sup>2</sup> remnant habitat

Target reached

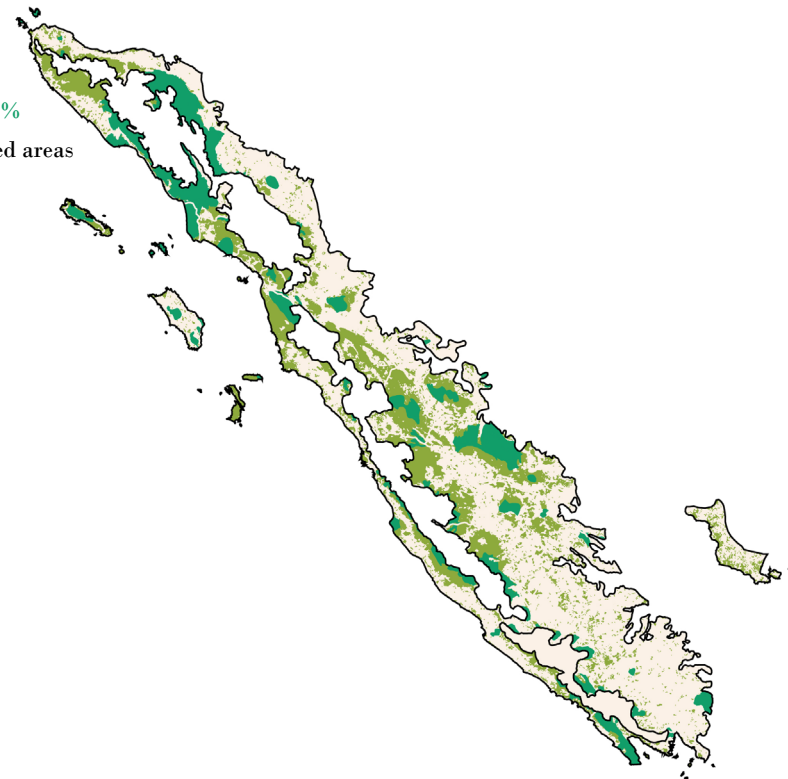


### 4. Sumatran Lowland Rain Forests

56,681 km<sup>2</sup> remnant habitat

To reach Aichi Target of 17%

+6,929 km<sup>2</sup> protected areas



### 6. Sumatran Tropical Pine Forests

1,075 km<sup>2</sup> remnant habitat

Target reached

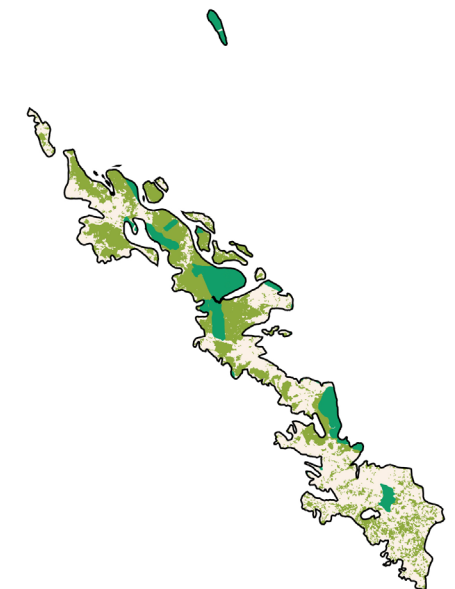


### 7. Sumatran Peat Swamp Forests

29,000 km<sup>2</sup> remnant habitat

To reach Aichi Target of 17%

+4,350 km<sup>2</sup> protected areas



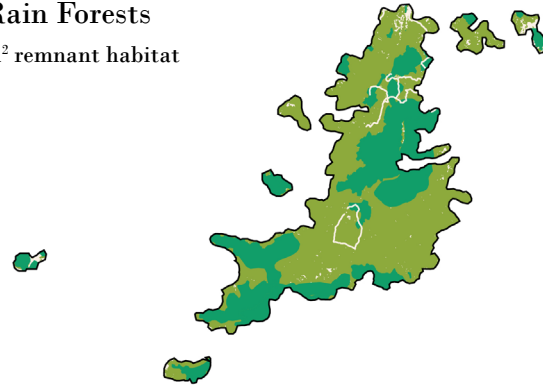


### 8. Borneo Montane Rain Forests



69,389 km<sup>2</sup> remnant habitat

Target reached



### 10. Borneo Peat Swamp Forests

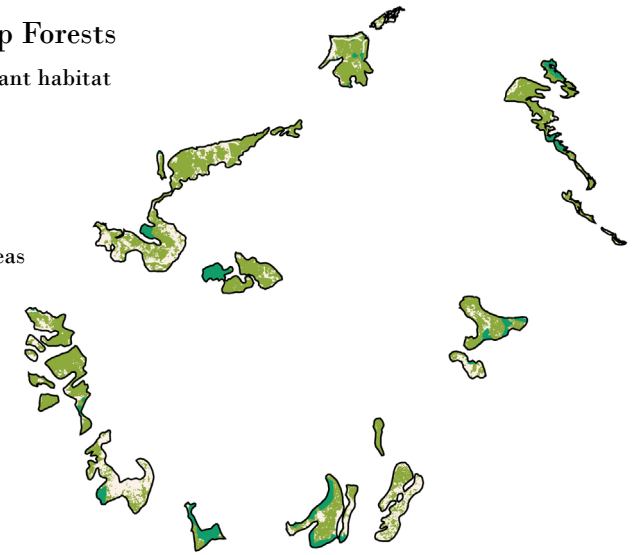


39,998 km<sup>2</sup> remnant habitat

To reach Aichi Target of 17%



+4,895 km<sup>2</sup> protected areas



### 9. Borneo Lowland Rain Forests

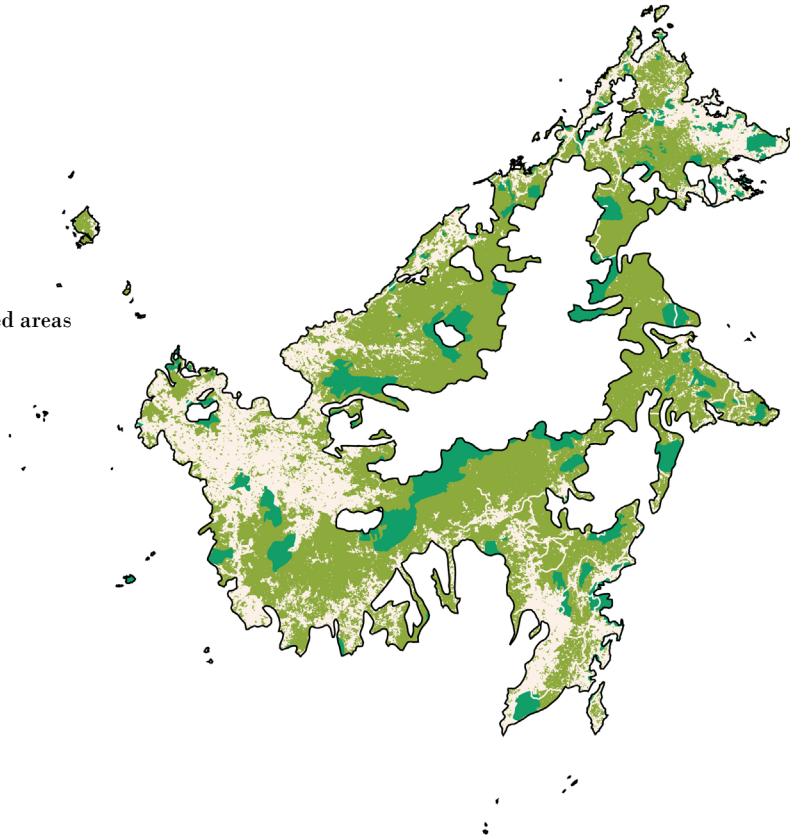


231,152 km<sup>2</sup> remnant habitat

To reach Aichi Target of 17%



+21,407 km<sup>2</sup> protected areas



### 11. Southwest Borneo Freshwater Swamp Forests

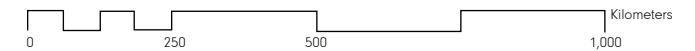


17,551 km<sup>2</sup> remnant habitat

To reach Aichi Target of 17%



+345 km<sup>2</sup> protected areas

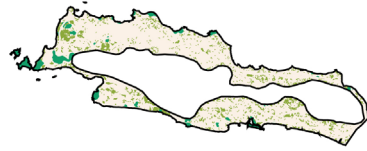


### 12. Western Java Rain Forests

■ 4,456 km<sup>2</sup> remnant habitat

To reach Aichi Target of 17%

■ +4,797 km<sup>2</sup> protected areas



### 13. Western Java Montane Rain Forests

■ 8,625 km<sup>2</sup> remnant habitat

To reach Aichi Target of 17%

■ +1,305 km<sup>2</sup> protected areas



### 14. Eastern Java-Bali Montane Rain Forests

■ 5,052 km<sup>2</sup> remnant habitat

Target reached

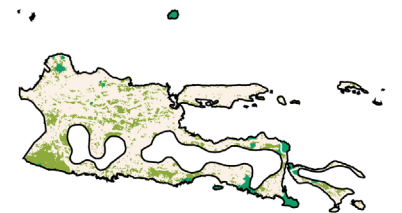


### 15. Eastern Java-Bali Rain Forests

■ 12,278 km<sup>2</sup> remnant habitat

To reach Aichi Target of 17%

■ +6,844 km<sup>2</sup> protected areas



### 16. Christmas & Cocos Islands Tropical Forests

Target reached

### 17. Nicobar Islands Rain Forests

■ 702 km<sup>2</sup> remnant habitat

Target reached



### 18. Mentawi Islands Rain Forests

■ 3,795 km<sup>2</sup> remnant habitat

Target reached



### 19. Kinabalu Montane Alpine Meadows

■ 2,114 km<sup>2</sup> remnant habitat

Target reached



### 20. Peninsular Malaysian Peat Swamp Forests

■ 2,347 km<sup>2</sup> remnant habitat

To reach Aichi Target of 17%

■ +589 km<sup>2</sup> protected areas



### 21. Peninsular Malaysian Montane Rain Forests

■ 10,671 km<sup>2</sup> remnant habitat

Target reached

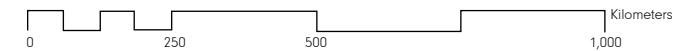
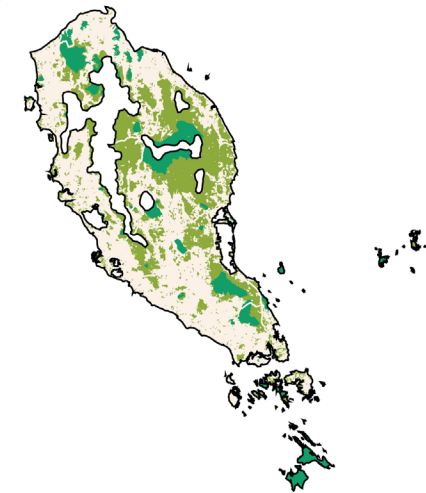


### 22. Peninsular Malaysian Rain Forests

■ 39,172 km<sup>2</sup> remnant habitat

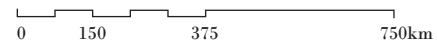
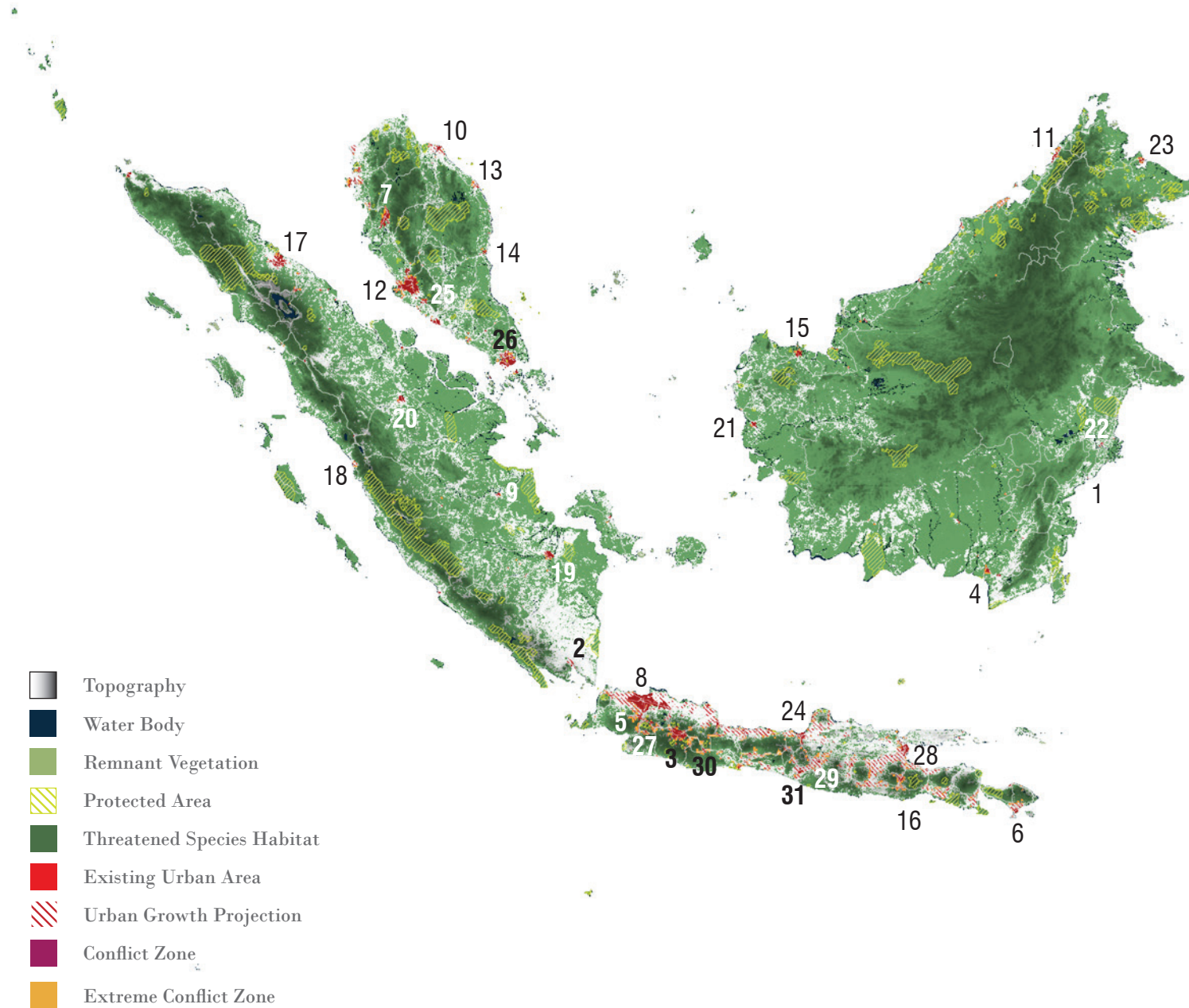
To reach Aichi Target of 17%

■ +7,707 km<sup>2</sup> protected areas



# SUNDALAND | CONFLICTS

Conflicts between 2030 projected urban growth areas and threatened species habitats



**50,863,000 Population**

2015 URBAN POPULATION

69,554,000

2030 URBAN POPULATION

177

THREATENED SPECIES

MAJOR CROPS

oil palm fruit, rice, rubber, coconuts

BIODIVERSITY THREATS

Illegal and Legal Logging

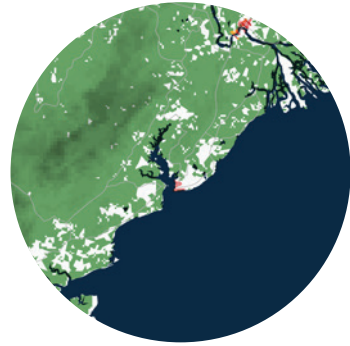
Poaching

Decentralization

Oil Palm Plantations

Road Construction

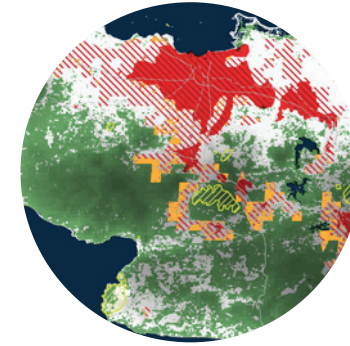




### 1. BALIKPAPAN, INDONESIA

POPULATION PROJECTIONS:

<u>2015:</u>	<u>2030:</u>
655,000	973,000



### 5. BOGOR, INDONESIA

POPULATION PROJECTIONS:

<u>2015:</u>	<u>2030:</u>
1,076,000	1,541,000



### 2. BANDAR LAMPUNG, INDONESIA

POPULATION PROJECTIONS:

<u>2015:</u>	<u>2030:</u>
965,000	1,350,000



### 6. DENPASAR, INDONESIA

POPULATION PROJECTIONS:

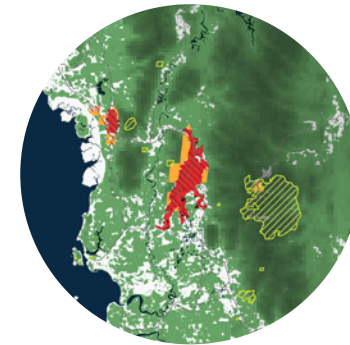
<u>2015:</u>	<u>2030:</u>
1,107,000	1,870,000



### 3. BANDUNG, INDONESIA

POPULATION PROJECTIONS:

<u>2015:</u>	<u>2030:</u>
2,544,000	3,433,000



### 7. IPOH, MALAYSIA

POPULATION PROJECTIONS:

<u>2015:</u>	<u>2030:</u>
737,000	998,000

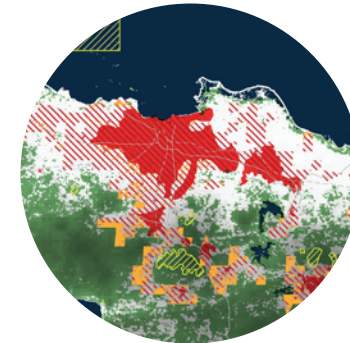
-  Topography
-  Water Body
-  Remnant Vegetation
-  Protected Area
-  Threatened Species Habitat
-  Existing Urban Area
-  Urban Growth Projection
-  Conflict Zone
-  Extreme Conflict Zone



### 4. BANJARMASIN, INDONESIA

POPULATION PROJECTIONS:

<u>2015:</u>	<u>2030:</u>
682,000	955,000



### 8. JAKARTA, INDONESIA

POPULATION PROJECTIONS:

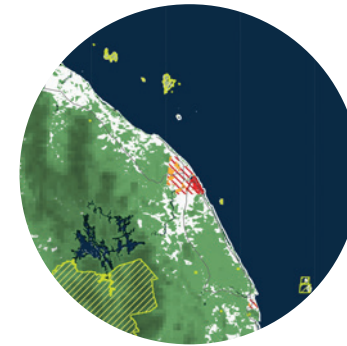
<u>2015:</u>	<u>2030:</u>
10,323,000	13,812,000



**9. JAMBI, INDONESIA**

POPULATION PROJECTIONS:

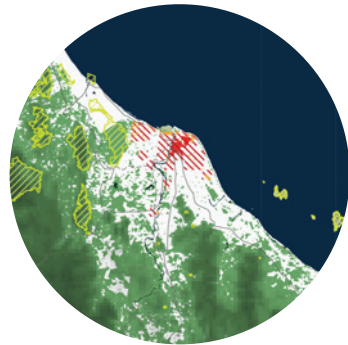
<u>2015:</u>	<u>2030:</u>
604,000	874,000



**13. KUALA TERENGGANU, MALAYSIA**

POPULATION PROJECTIONS:

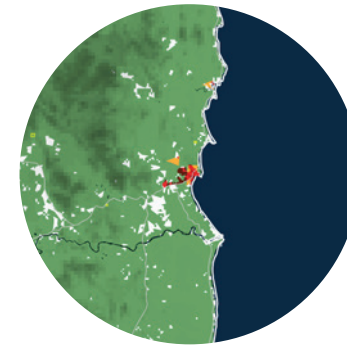
<u>2015:</u>	<u>2030:</u>
349,000	476,000



**10. KOTA BHARU, MALAYSIA**

POPULATION PROJECTIONS:

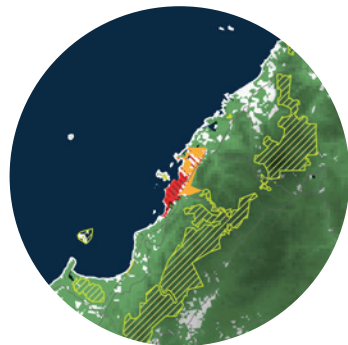
<u>2015:</u>	<u>2030:</u>
322,000	433,000



**14. KUANTAN, MALAYSIA**

POPULATION PROJECTIONS:

<u>2015:</u>	<u>2030:</u>
440,000	617,000



**11. KOTA KINABALU, MALAYSIA**

POPULATION PROJECTIONS:

<u>2015:</u>	<u>2030:</u>
478,000	673,000

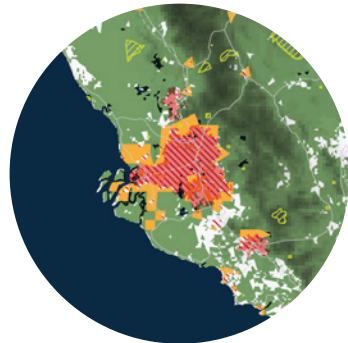


**15. KUCHING, MALAYSIA**

POPULATION PROJECTIONS:

<u>2015:</u>	<u>2030:</u>
560,000	755,000

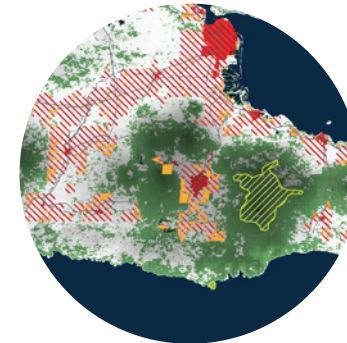
-  Topography
-  Water Body
-  Remnant Vegetation
-  Protected Area
-  Threatened Species Habitat
-  Existing Urban Area
-  Urban Growth Projection
-  Conflict Zone
-  Extreme Conflict Zone



**12. KUALA LUMPUR / KLANG, MALAYSIA**

POPULATION PROJECTIONS:

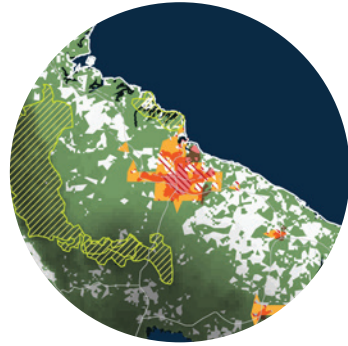
<u>2015:</u>	<u>2030:</u>
6,837,000	9,423,000



**16. MALANG, INDONESIA**

POPULATION PROJECTIONS:

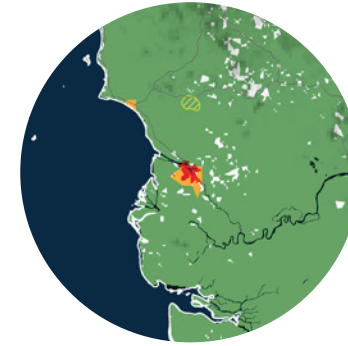
<u>2015:</u>	<u>2030:</u>
856,000	1,156,000



**17. MEDAN, INDONESIA**

POPULATION PROJECTIONS:

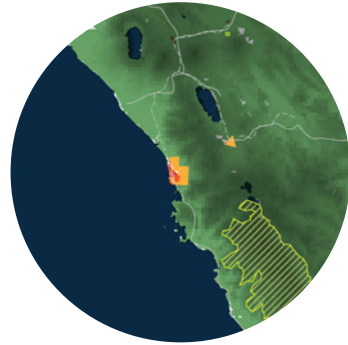
<u>2015:</u>	<u>2030:</u>
2,204,000	2,955,000



**21. PONTIANAK, INDONESIA**

POPULATION PROJECTIONS:

<u>2015:</u>	<u>2030:</u>
603,000	844,000



**18. PADANG, INDONESIA**

POPULATION PROJECTIONS:

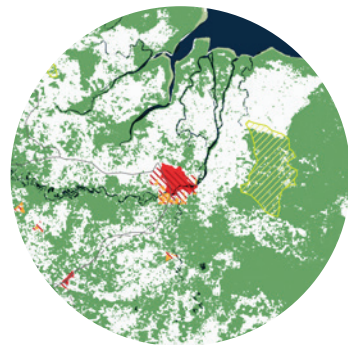
<u>2015:</u>	<u>2030:</u>
903,000	1,254,000



**22. SAMARINDA, INDONESIA**

POPULATION PROJECTIONS:

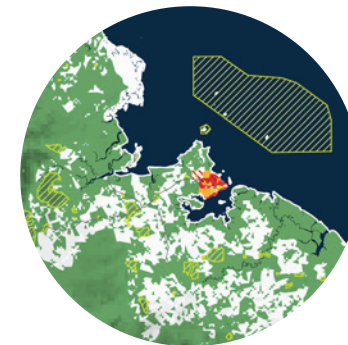
<u>2015:</u>	<u>2030:</u>
865,000	1,291,000



**19. PALEMBANG, INDONESIA**

POPULATION PROJECTIONS:

<u>2015:</u>	<u>2030:</u>
1,455,000	1,888,000



**23. SANDAKAN, MALAYSIA**

POPULATION PROJECTIONS:

<u>2015:</u>	<u>2030:</u>
349,000	467,000

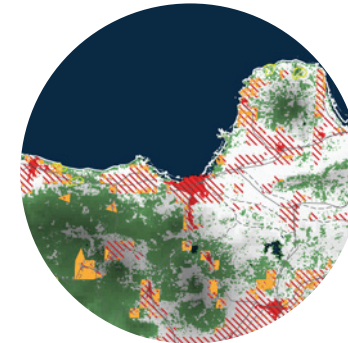
-  Topography
-  Water Body
-  Remnant Vegetation
-  Protected Area
-  Threatened Species Habitat
-  Existing Urban Area
-  Urban Growth Projection
-  Conflict Zone
-  Extreme Conflict Zone



**20. PEKANBARU, INDONESIA**

POPULATION PROJECTIONS:

<u>2015:</u>	<u>2030:</u>
1,121,000	1,731,000

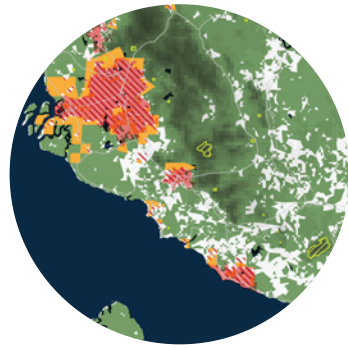


**24. SEMARANG, INDONESIA**

POPULATION PROJECTIONS:

<u>2015:</u>	<u>2030:</u>
1,630,000	2,188,000

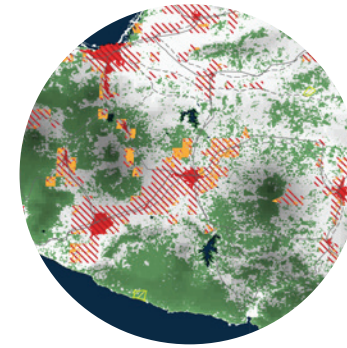




**25. SEREMBAN, MALAYSIA**

POPULATION PROJECTIONS:

<u>2015:</u>	<u>2030:</u>
422,000	585,000



**29. SURAKARTA, INDONESIA**

POPULATION PROJECTIONS:

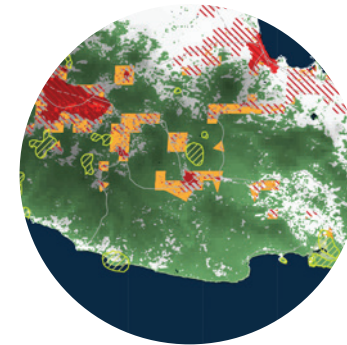
<u>2015:</u>	<u>2030:</u>
504,000	668,000



**26. SINGAPORE / JOHOR BAHRU / BATAM, MALAYSIA**

POPULATION PROJECTIONS:

<u>2015:</u>	<u>2030:</u>
6,531,000	7,827,000
912,000	1,249,000
1,391,000	2,486,000



**30. TASIKMALAYA, INDONESIA**

POPULATION PROJECTIONS:

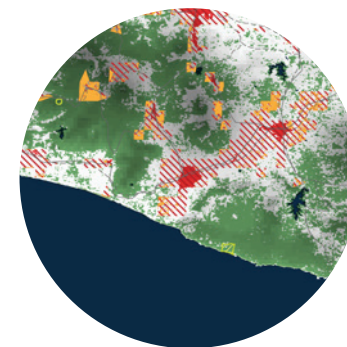
<u>2015:</u>	<u>2030:</u>
787,000	1,305,000



**27. SUKABUMI, INDONESIA**

POPULATION PROJECTIONS:

<u>2015:</u>	<u>2030:</u>
326,000	462,000



**31. YOGYAKARTA, INDONESIA**

POPULATION PROJECTIONS:

<u>2015:</u>	<u>2030:</u>
385,000	503,000



**28. SURABAYA, INDONESIA**

POPULATION PROJECTIONS:

<u>2015:</u>	<u>2030:</u>
2,853,000	3,760,000

-  Topography
-  Water Body
-  Remnant Vegetation
-  Protected Area
-  Threatened Species Habitat
-  Existing Urban Area
-  Urban Growth Projection
-  Conflict Zone
-  Extreme Conflict Zone