

SUCCULENT KAROO

138,266 km²

BIODIVERSITY TARGET

2020 TARGET: 17% protected



2015: 22% PROTECTED

.5% I-IV

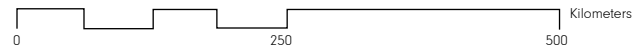
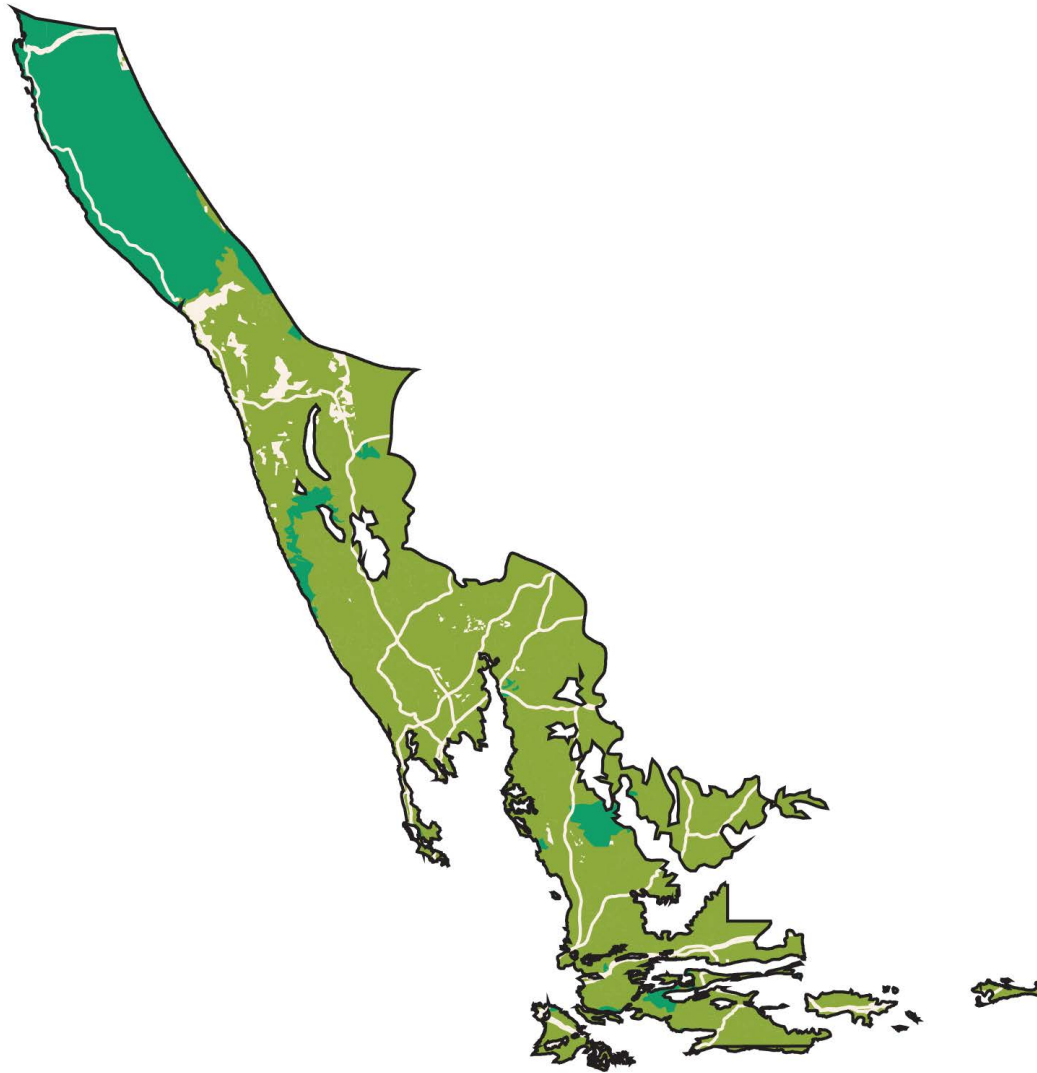
21.5% NA

- Succulent Karoo Hotspot
- Neighboring Hotspot
- Protected Area (IUCN Category I-IV)
- Protected Area (IUCN Category V-VI)
- Protected Area (IUCN Category NA)
- Urban Area
- Agriculture (0-100% landuse)
- Roads
- Railroads



SUCCULENT KAROO ECOREGIONS

Shortfall Assessment to reach Target of 17% protected land in each terrestrial ecoregion



Namibia, South Africa

1 BIOME

Deserts & Xeric Shrublands

1 ECOREGION

ENDEMIC PLANT SPECIES

2,439

ENDEMIC ANIMAL SPECIES

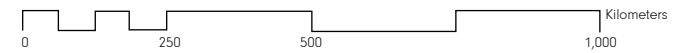
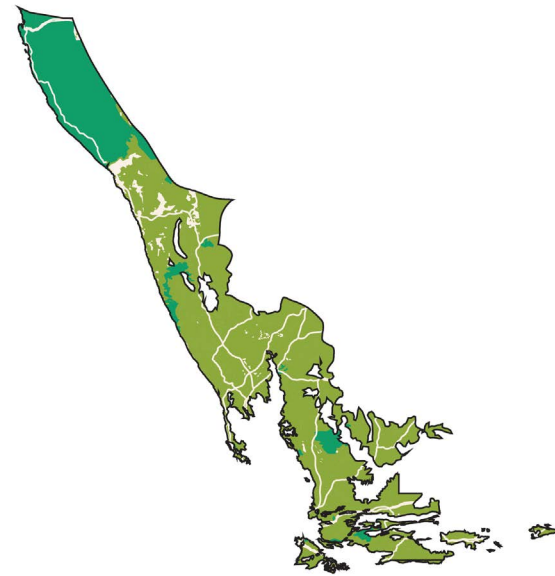
19

1. Succulent Karoo



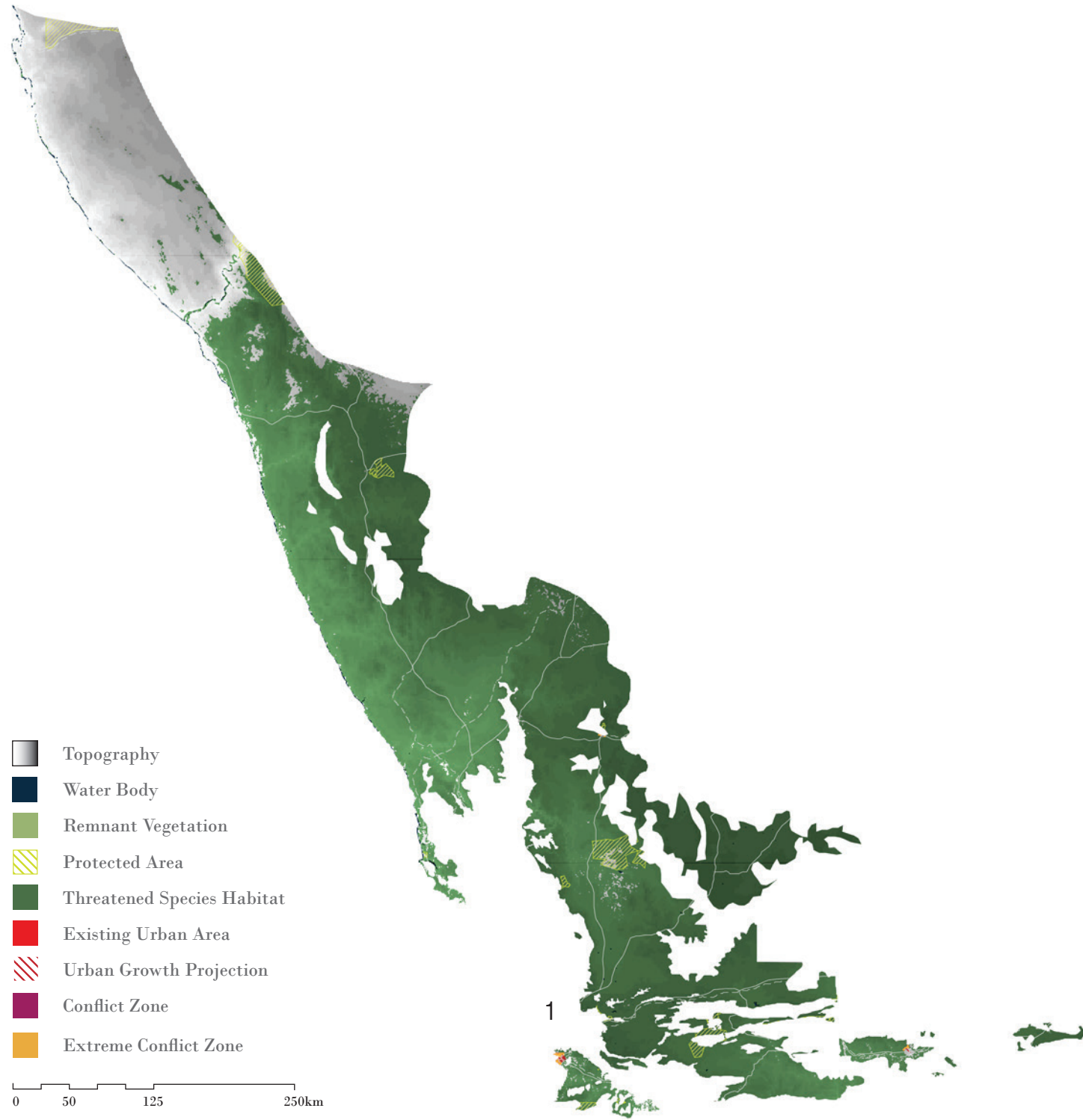
106,658 km² remnant habitat

Target reached



SUCCULENT KAROO | CONFLICTS

Conflicts between 2030 projected urban growth areas and threatened species habitats



3,660,000 Population

2015 URBAN POPULATION

4,322,000

2030 URBAN POPULATION

10

THREATENED SPECIES

MAJOR CROPS

grapes, wheat, barley, chicory

BIODIVERSITY THREATS

Agricultural Expansion

Overgrazing

Mining



1. CAPE TOWN, SOUTH AFRICA

POPULATION PROJECTIONS:

<u>2015:</u>	<u>2030:</u>
3,660,000	4,322,000

-  Topography
-  Water Body
-  Remnant Vegetation
-  Protected Area
-  Threatened Species Habitat
-  Existing Urban Area
-  Urban Growth Projection
-  Conflict Zone
-  Extreme Conflict Zone