

SOUTHWEST AUSTRALIA

492,455 km²



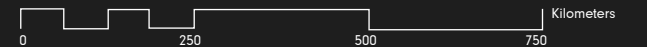
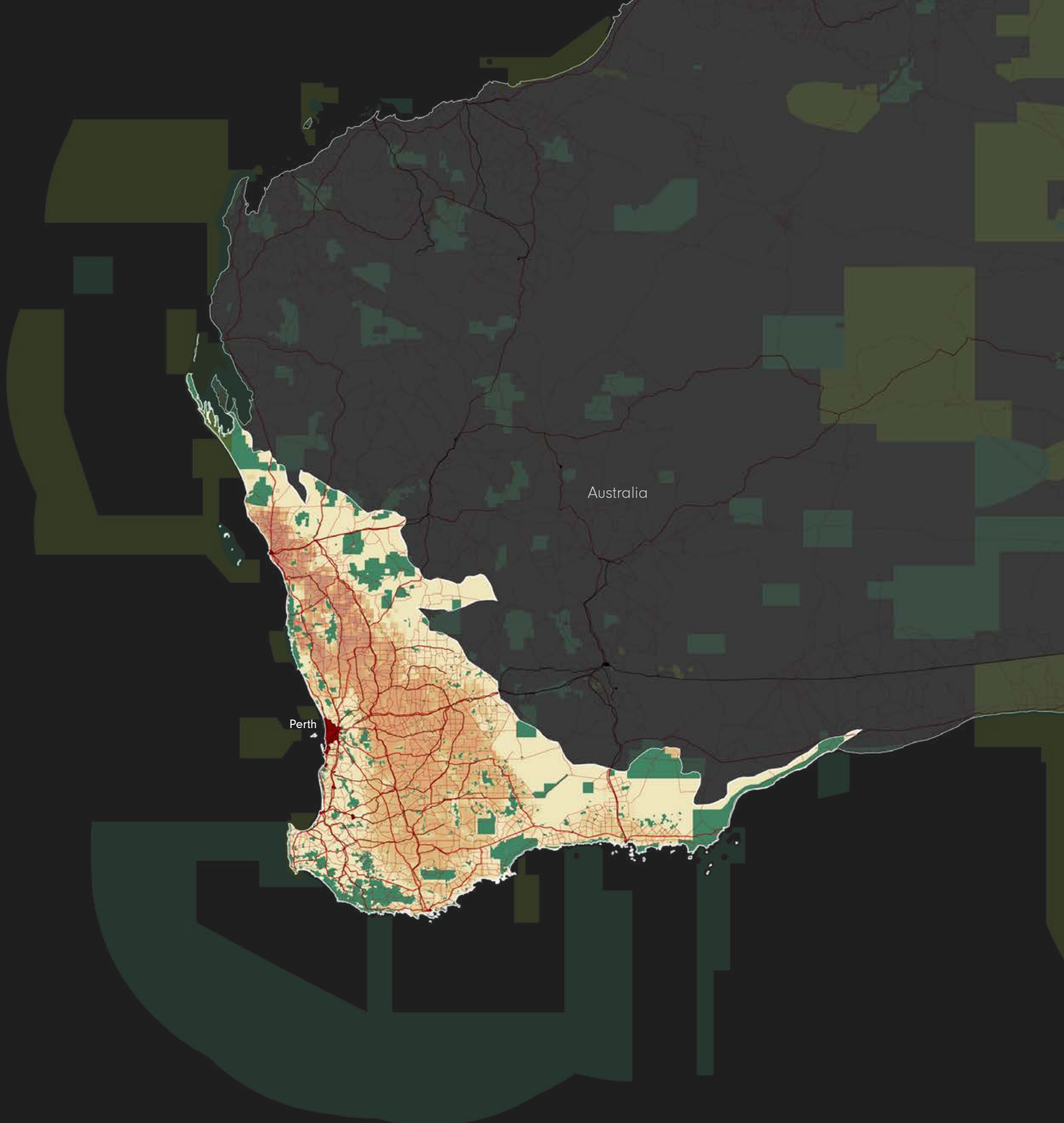
BIODIVERSITY TARGET

2020 TARGET: 17% protected



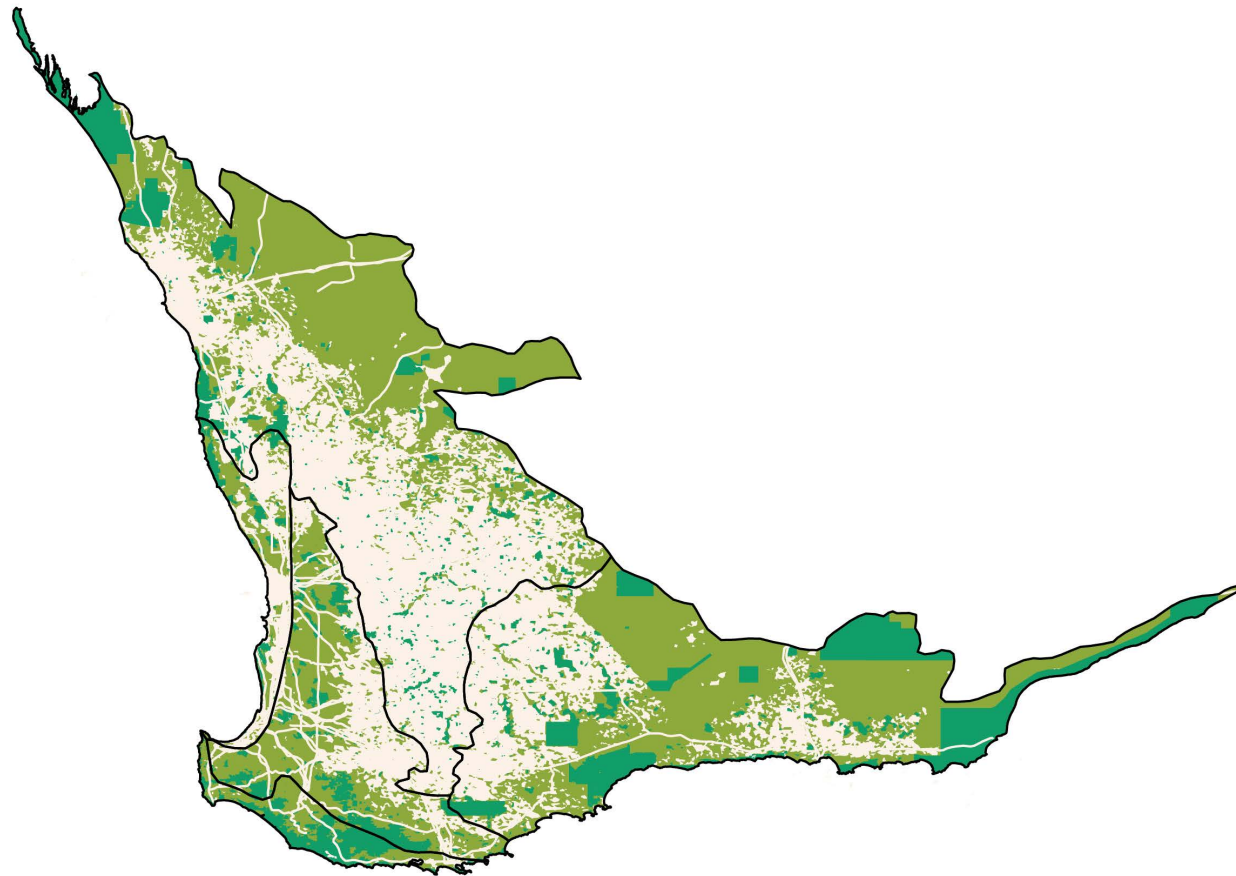
2015: 16.4% PROTECTED
16% I-IV
.4% NA

- Southwest Australia Hotspot
- Neighboring Hotspot
- Protected Area (IUCN Category I-IV)
- Protected Area (IUCN Category V-VI)
- Protected Area (IUCN Category NA)
- Urban Area
- Agriculture (0-100% landuse)
- Roads
- Railroads



SOUTHWEST AUSTRALIA ECOREGIONS

Shortfall Assessment to reach Target of 17% protected land in each terrestrial ecoregion



Australia

1 BIOME

Mediterranean Forests, Woodlands & Scrub

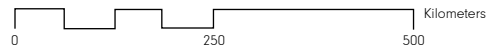
5 ECOREGIONS

ENDEMIC PLANT SPECIES

2,948

ENDEMIC ANIMAL SPECIES

81



1. Southwest Australia Woodlands

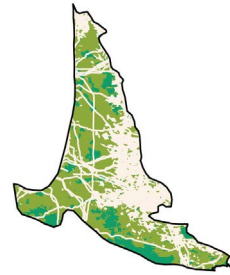


36,795 km² remnant habitat

To reach Aichi Target of 17%



+2,941 km² protected areas



4. Esperance Mallee



78,126 km² remnant habitat

Target reached



2. Swan Coastal Plain Scrub & Woodlands



7,483 km² remnant habitat

To reach Aichi Target of 17%



+899 km² protected areas



5. Southwest Australia Savanna

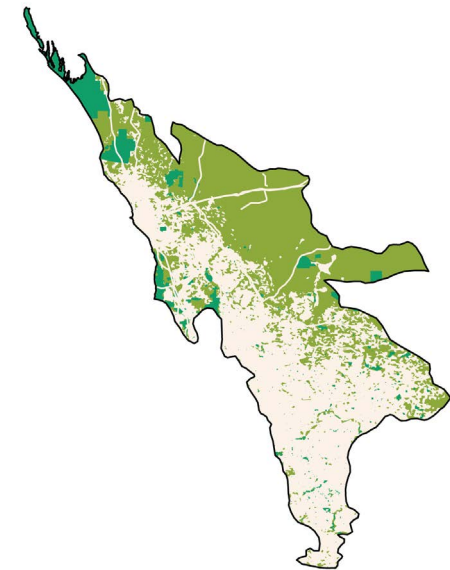


90,204 km² remnant habitat

To reach Aichi Target of 17%



+17,780 km² protected areas

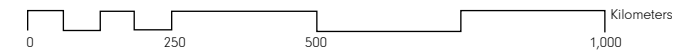


3. Jarrah-Karri Forest



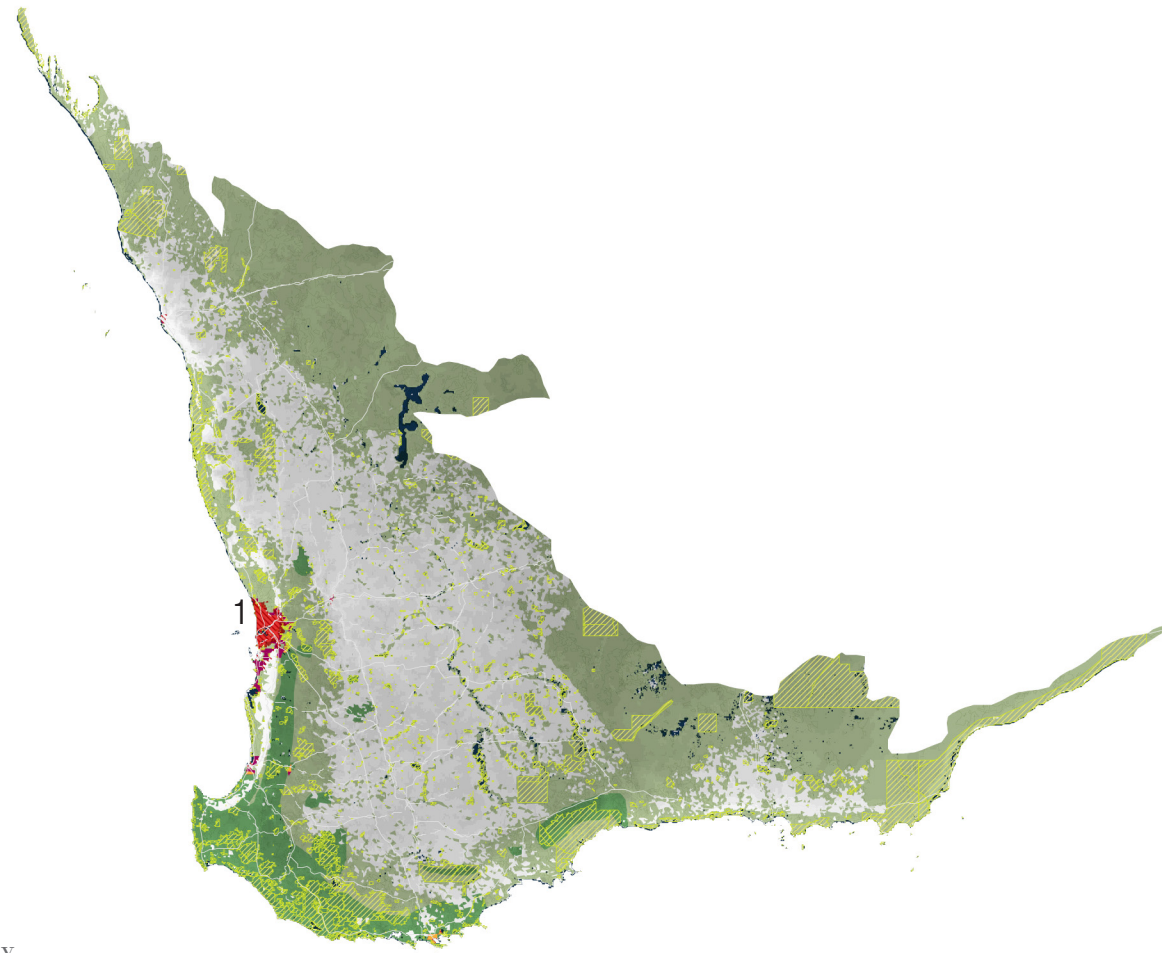
7,308 km² remnant habitat

Target reached



SOUTHWEST AUSTRALIA | CONFLICTS

Conflicts between 2030 projected urban growth areas and threatened species habitats



1,861,000 Population

2015 URBAN POPULATION

2,329,000

2030 URBAN POPULATION

11

THREATENED SPECIES

MAJOR CROPS

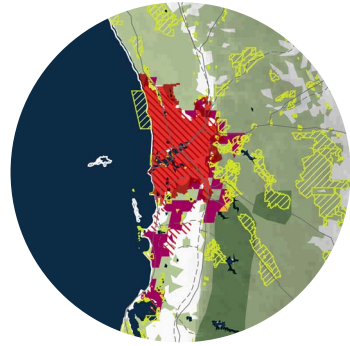
wheat, barley, tritical, oats, rapeseed,
lupins, peas

BIODIVERSITY THREATS

Agricultural Expansion
Low Density Urbanization/Sprawl
Infrastructure
Climate Change

- Topography
- Water Body
- Remnant Vegetation
- Protected Area
- Threatened Species Habitat
- Existing Urban Area
- Urban Growth Projection
- Conflict Zone
- Extreme Conflict Zone

0 100 250 500km



1. PERTH, AUSTRALIA

POPULATION PROJECTIONS:

2015:	2030:
1,861,000	2,329,000

-  Topography
-  Water Body
-  Remnant Vegetation
-  Protected Area
-  Threatened Species Habitat
-  Existing Urban Area
-  Urban Growth Projection
-  Conflict Zone
-  Extreme Conflict Zone