

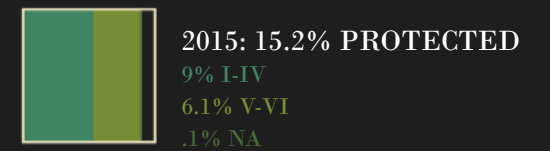
PHILIPPINES

310,103 km²

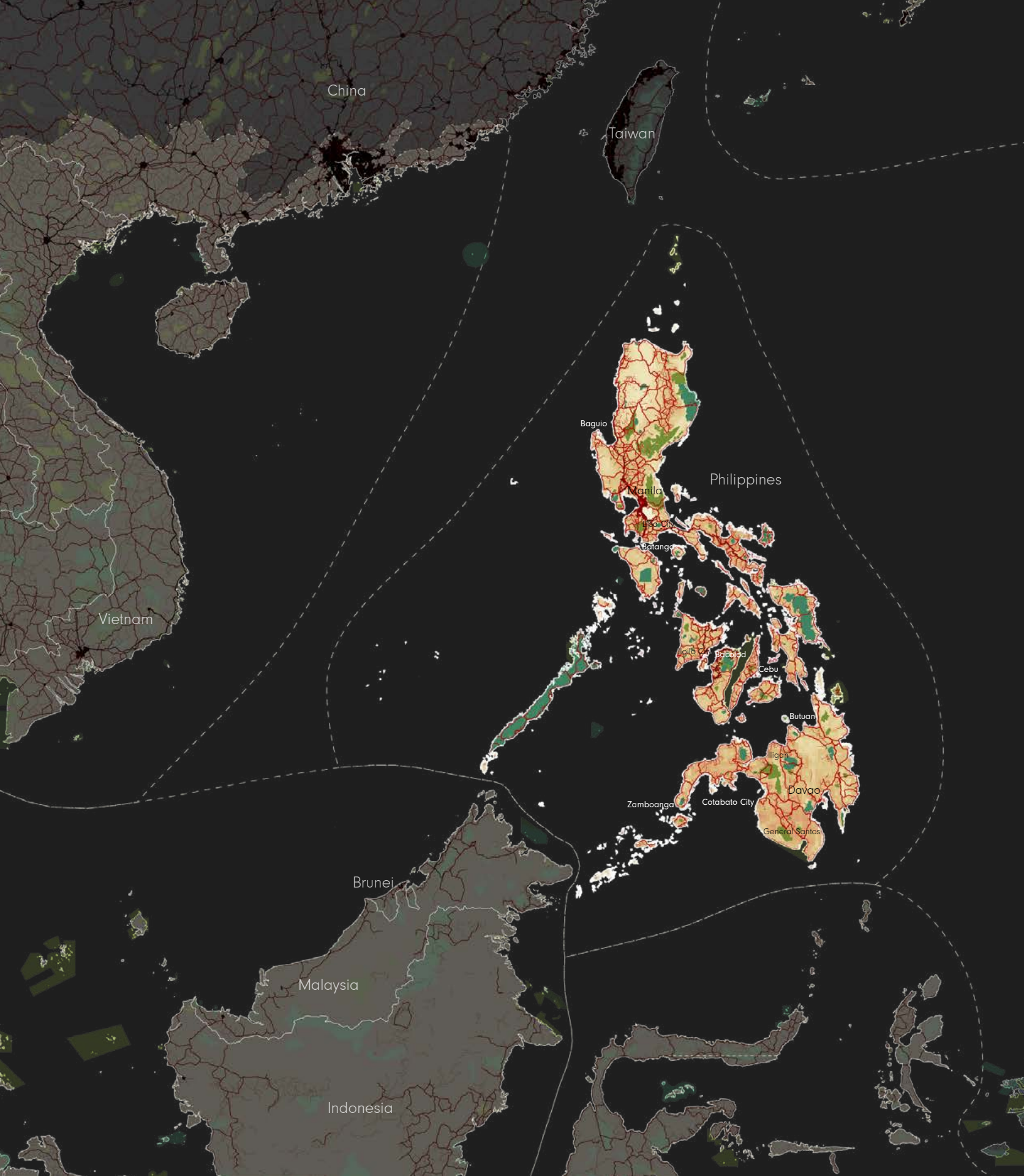
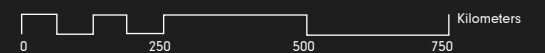


BIODIVERSITY TARGET

2020 TARGET: 17% protected

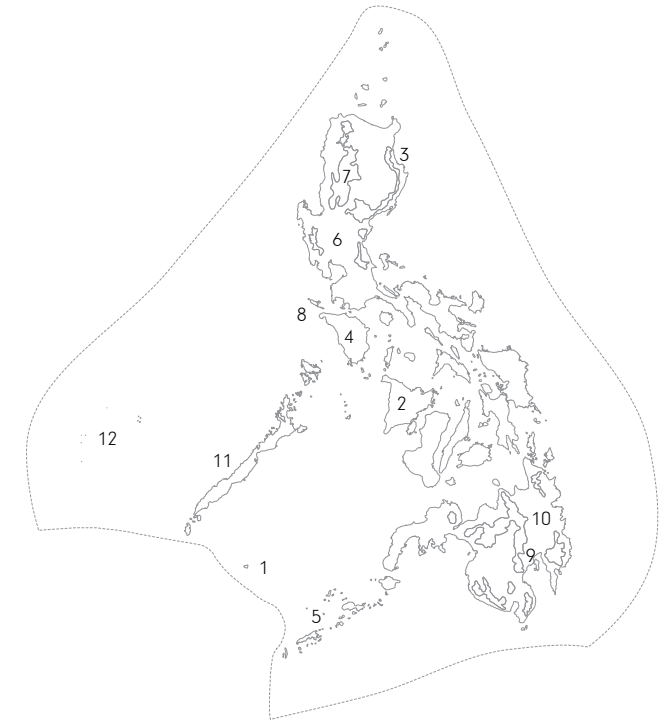
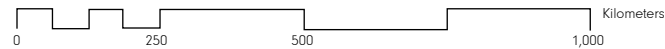
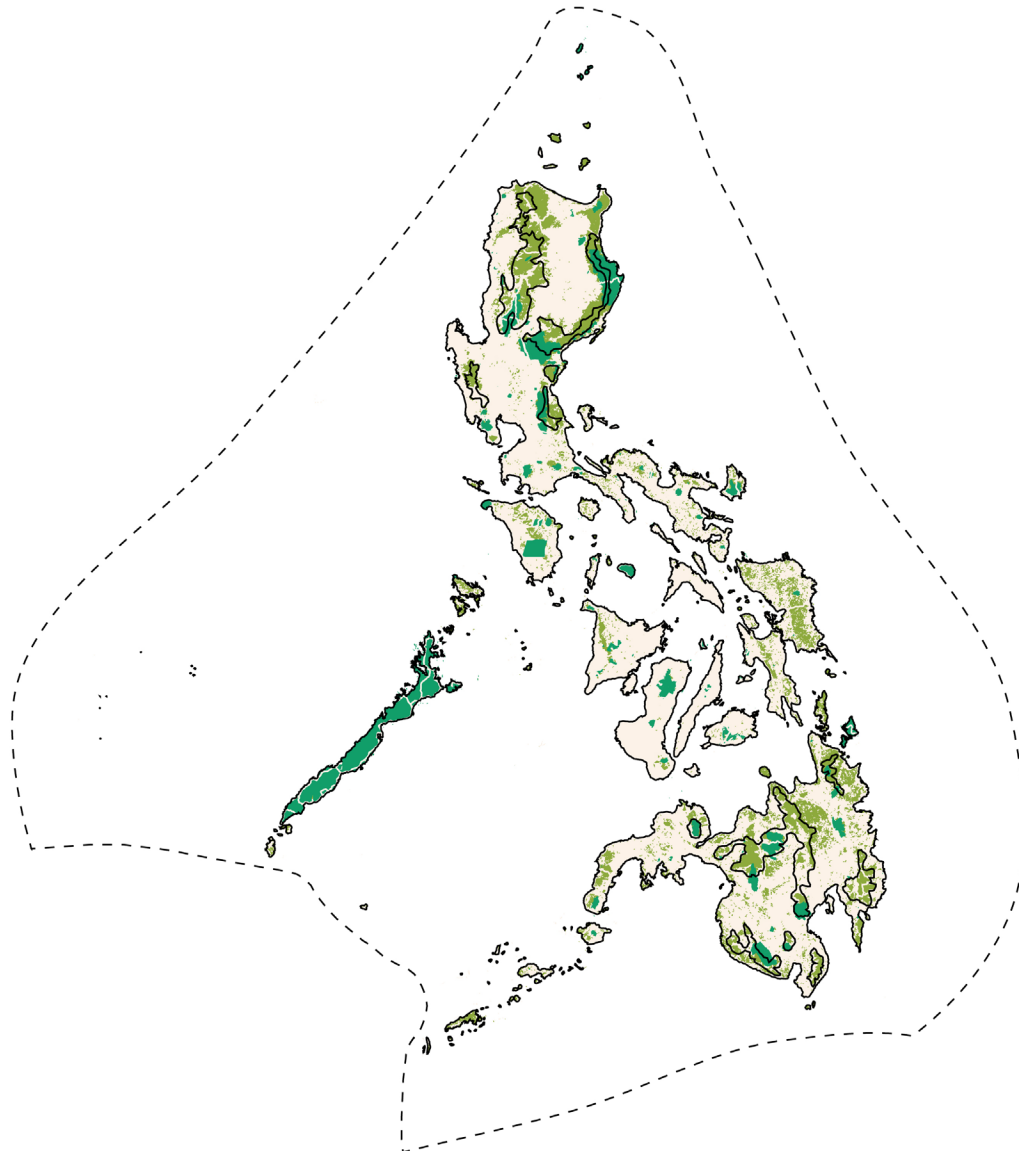


- Philippines Hotspot
- Neighboring Hotspot
- Protected Area (IUCN Category I-IV)
- Protected Area (IUCN Category V-VI)
- Protected Area (IUCN Category NA)
- Urban Area
- Agriculture (0-100% landuse)
- Roads
- Railroads



PHILIPPINES ECOREGIONS

Shortfall Assessment to reach Target of 17% protected land in each terrestrial ecoregion



Philippines

2 BIOMES

Tropical & Subtropical Coniferous Forests

Tropical & Subtropical Moist Broadleaf Forests

12 ECOREGIONS

ENDEMIC PLANT SPECIES

6,091

ENDEMIC ANIMAL SPECIES

591

1. Borneo Lowland Rain Forests

64 km² remnant habitat

To reach Aichi Target of 17%

+11 km² protected areas



5. Sulu Archipelago Rain Forests

1,043 km² remnant habitat

To reach Aichi Target of 17%

+370 km² protected areas

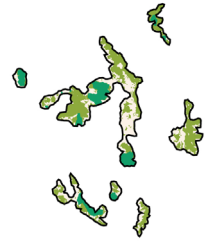


9. Mindanao Montane Rain Forests

7,167 km² remnant habitat

To reach Aichi Target of 17%

+300 km² protected areas

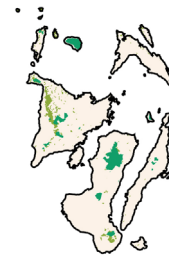


2. Greater Negros-Panay Rain Forests

33,483 km² remnant habitat

To reach Aichi Target of 17%

+3,780 km² protected areas

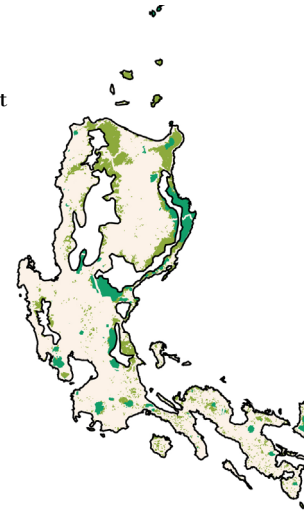


6. Luzon Rain Forests

13,708 km² remnant habitat

To reach Aichi Target of 17%

+9,688 km² protected areas

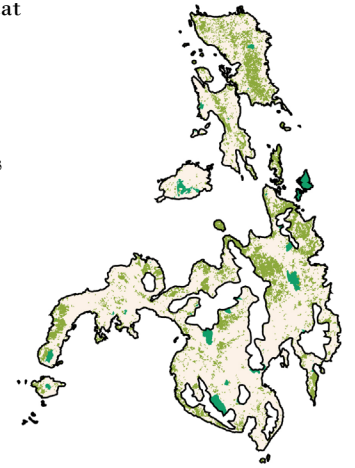


10. Mindanao-Eastern Visayas Rain Forests

22,140 km² remnant habitat

To reach Aichi Target of 17%

+14,743 km² protected areas



3. Luzon Montane Rain Forests

8,987 km² remnant habitat

To reach Aichi Target of 17%

+1,528 km² protected areas



7. Luzon Tropical Pine Forests

3,729 km² remnant habitat

To reach Aichi Target of 17%

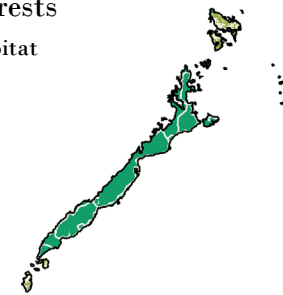
+63 km² protected areas



11. Palawan Rain Forests

2,496 km² remnant habitat

Target reached



4. Mindoro Rain Forests

610 km² remnant habitat

To reach Aichi Target of 17%



6. Maldives-Lakshadweep-Chagos-Archipelago Tropical Moist Forests

81 km² remnant habitat

To reach Aichi Target of 17%

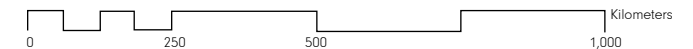
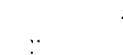
+44 km² protected areas



12. South China Sea Islands

To reach Aichi Target of 17%

+1 km² protected areas

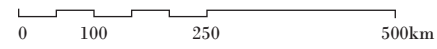


PHILIPPINES | CONFLICTS

Conflicts between 2030 projected urban growth areas and threatened species habitats



- Topography
- Water Body
- Remnant Vegetation
- Protected Area
- Threatened Species Habitat
- Existing Urban Area
- Urban Growth Projection
- Conflict Zone
- Extreme Conflict Zone



20,142,000 Population

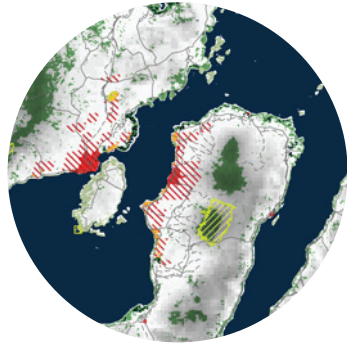
2015 URBAN POPULATION

26,650,000
2030 URBAN POPULATION

81
THREATENED SPECIES

MAJOR CROPS
rice, maize, vegetables, coconut

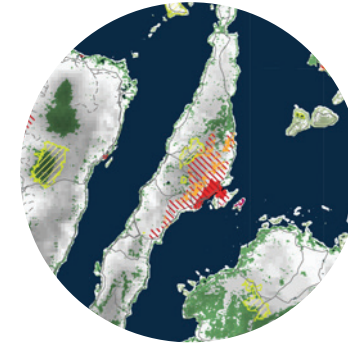
BIODIVERSITY THREATS
Deforestation
Urban Development
Population Growth
Industrialization
Mining



1. BACOLOD, PHILIPPINES

POPULATION PROJECTIONS:

<u>2015:</u>	<u>2030:</u>
559,000	753,000



5. CEBU, PHILIPPINES

POPULATION PROJECTIONS:

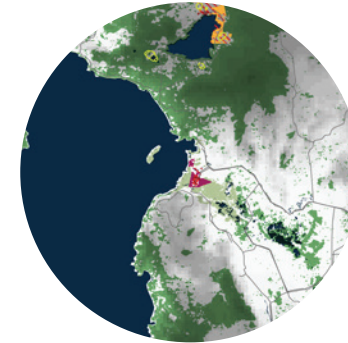
<u>2015:</u>	<u>2030:</u>
951,000	1,278,000



2. BAGUIO CITY, PHILIPPINES

POPULATION PROJECTIONS:

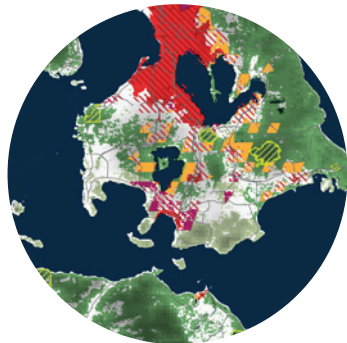
<u>2015:</u>	<u>2030:</u>
358,000	497,000



6. COTABATO, PHILIPPINES

POPULATION PROJECTIONS:

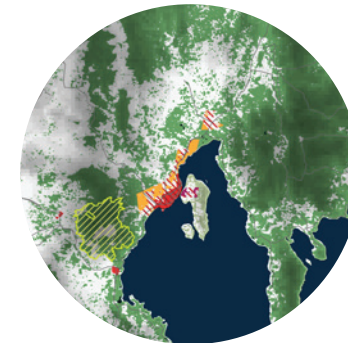
<u>2015:</u>	<u>2030:</u>
351,000	543,000



3. BATANGAS CITY, PHILIPPINES

POPULATION PROJECTIONS:

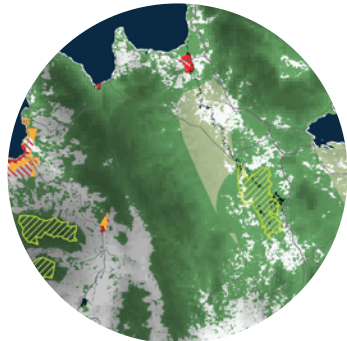
<u>2015:</u>	<u>2030:</u>
340,000	467,000



7. DAVAO, PHILIPPINES

POPULATION PROJECTIONS:

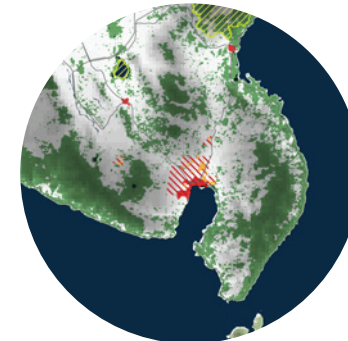
<u>2015:</u>	<u>2030:</u>
1,630,000	2,216,000



4. BUTUAN, PHILIPPINES

POPULATION PROJECTIONS:

<u>2015:</u>	<u>2030:</u>
333,000	447,000

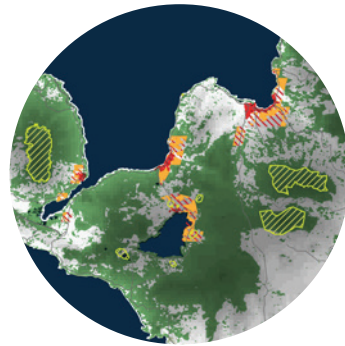


8. GENERAL SANTOS CITY, PHILIPPINES

POPULATION PROJECTIONS:

<u>2015:</u>	<u>2030:</u>
616,000	859,000

-  Topography
-  Water Body
-  Remnant Vegetation
-  Protected Area
-  Threatened Species Habitat
-  Existing Urban Area
-  Urban Growth Projection
-  Conflict Zone
-  Extreme Conflict Zone



9. ILIGAN, PHILIPPINES

POPULATION PROJECTIONS:

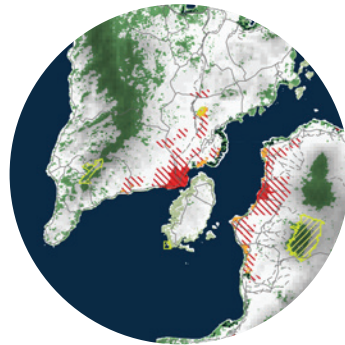
<u>2015:</u>	<u>2030:</u>
343,000	456,000



13. ZAMBOANGA CITY, PHILIPPINES

POPULATION PROJECTIONS:

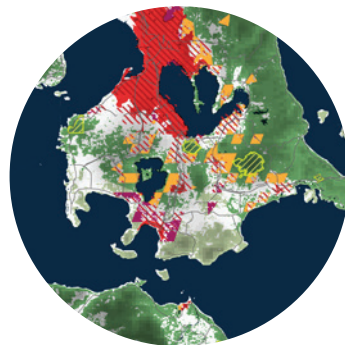
<u>2015:</u>	<u>2030:</u>
936,000	1,313,000



10. ILOILO CITY, PHILIPPINES

POPULATION PROJECTIONS:

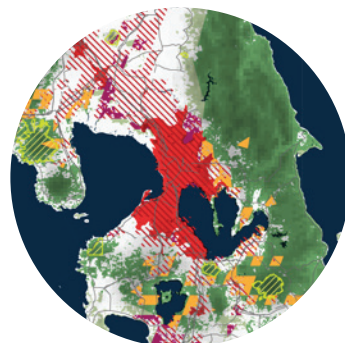
<u>2015:</u>	<u>2030:</u>
457,000	611,000



11. LIPA CITY, PHILIPPINES

POPULATION PROJECTIONS:

<u>2015:</u>	<u>2030:</u>
323,000	454,000



12. MANILA, PHILIPPINES

POPULATION PROJECTIONS:

<u>2015:</u>	<u>2030:</u>
12,946,000	16,756,000

-  Topography
-  Water Body
-  Remnant Vegetation
-  Protected Area
-  Threatened Species Habitat
-  Existing Urban Area
-  Urban Growth Projection
-  Conflict Zone
-  Extreme Conflict Zone