

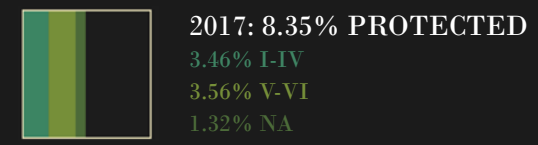
# NORTH AMERICAN COASTAL PLAIN

1,234,500 km<sup>2</sup>



## BIODIVERSITY TARGET

2020 TARGET: 17% protected

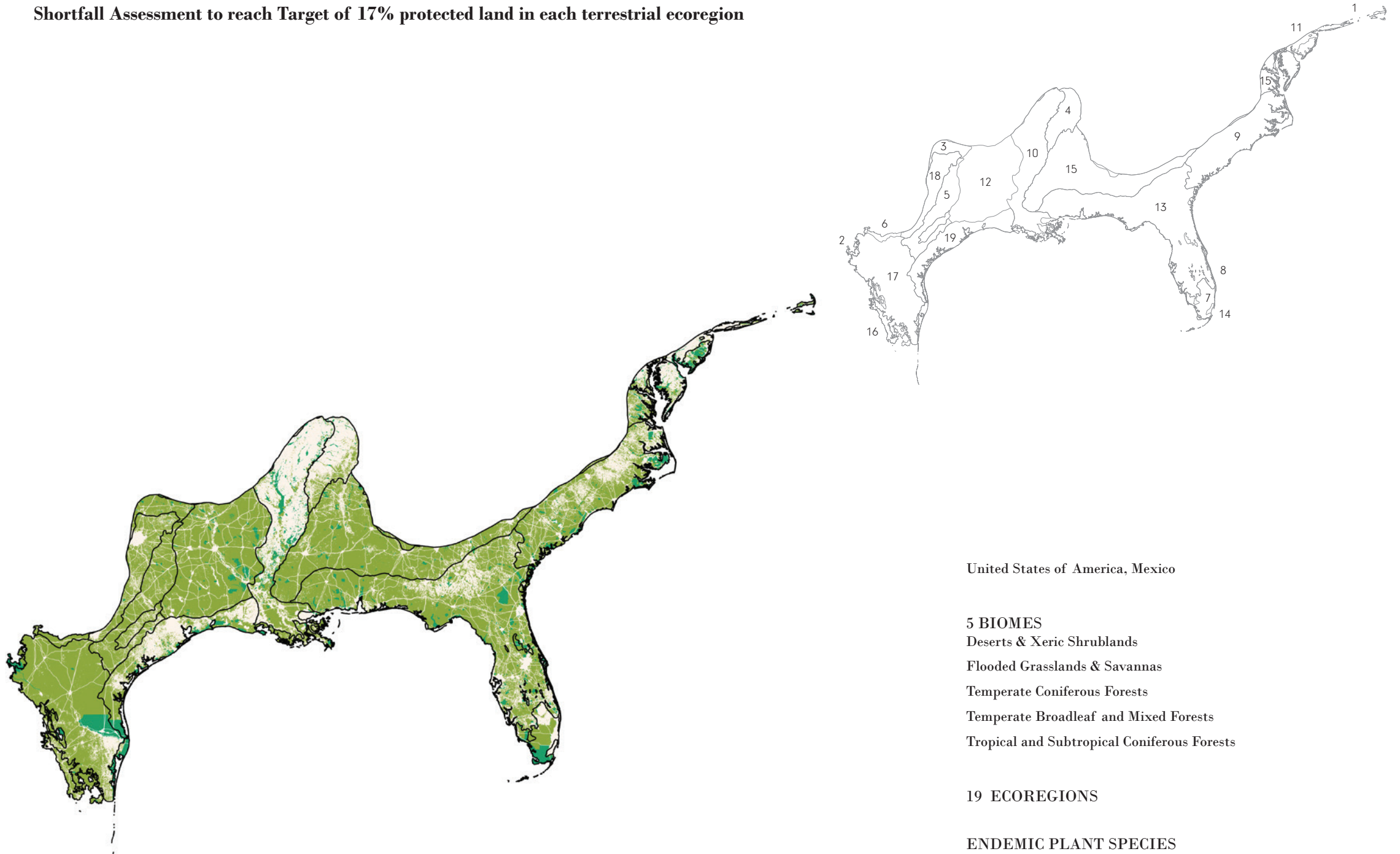


- North American Coastal Plain Hotspot
- Neighboring Hotspot
- Protected Area (IUCN Category I-IV)
- Protected Area (IUCN Category V-VI)
- Protected Area (IUCN Category NA)
- Urban Area
- Agriculture (0-100% landuse)
- Roads
- Railroads



# NORTH AMERICAN COASTAL PLAIN ECOREGIONS

Shortfall Assessment to reach Target of 17% protected land in each terrestrial ecoregion



United States of America, Mexico

## 5 BIOMES

Deserts & Xeric Shrublands

Flooded Grasslands & Savannas

Temperate Coniferous Forests

Temperate Broadleaf and Mixed Forests

Tropical and Subtropical Coniferous Forests

## 19 ECOREGIONS

## ENDEMIC PLANT SPECIES

1,816

## ENDEMIC ANIMAL SPECIES

428

### 1. Atlantic Coastal Pine Barrens

■ 5,195 km<sup>2</sup> remnant habitat

To reach Aichi Target of 17%

■ + 542 km<sup>2</sup> protected land



### 2. Chihuahuan Desert

■ 3,743 km<sup>2</sup> remnant habitat

Target reached



### 3. Central Forest-Grasslands Transition

■ 12,401 km<sup>2</sup> remnant habitat

To reach Aichi Target of 17%

■ + 2,122 km<sup>2</sup> protected land



### 4. Central U.S. Hardwood Forests

■ 9,191 km<sup>2</sup> remnant habitat

To reach Aichi Target of 17%

■ + 5,631 km<sup>2</sup> protected land



### 5. East Central Texas Forests

■ 42,992 km<sup>2</sup> remnant habitat

To reach Aichi Target of 17%

■ + 8,660 km<sup>2</sup> protected land



### 6. Edwards Plateau Savanna

■ 4,610 km<sup>2</sup> remnant habitat

To reach Aichi Target of 17%

■ + 818 km<sup>2</sup> protected land

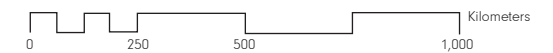


### 7. Everglades

■ 13,521 km<sup>2</sup> remnant habitat

To reach Aichi Target of 17%

■ + 490 km<sup>2</sup> protected land



### 8. Florida Sand Pine Scrub

■ 2,423 km<sup>2</sup> remnant habitat

To reach Aichi Target of 17%

■ + 564 km<sup>2</sup> protected land



### 11. Northeastern Coastal Forests

■ 2,529 km<sup>2</sup> remnant habitat

To reach Aichi Target of 17%

■ + 1,562 km<sup>2</sup> protected land



### 9. Middle Atlantic Coastal Forests



82,969 km<sup>2</sup> remnant habitat

To reach Aichi Target of 17%



+ 17,011 km<sup>2</sup> protected land



### 12. Piney Woods Forests

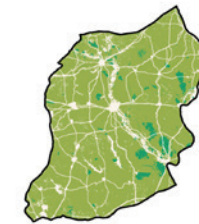


127,282 km<sup>2</sup> remnant habitat

To reach Aichi Target of 17%



+ 18,651 km<sup>2</sup> protected land



### 10. Mississippi Lowland Forests



29,131 km<sup>2</sup> remnant habitat

To reach Aichi Target of 17%



+ 9,743 km<sup>2</sup> protected land



### 13. Southeastern Conifer Forests

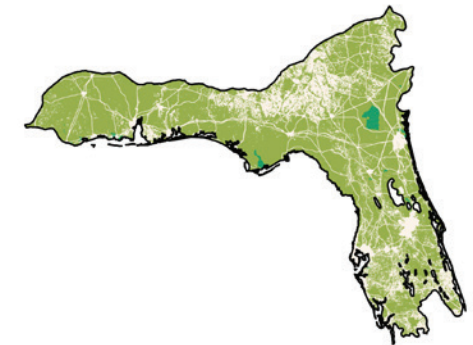


177,860 km<sup>2</sup> remnant habitat

To reach Aichi Target of 17%



+ 37,618 km<sup>2</sup> protected land



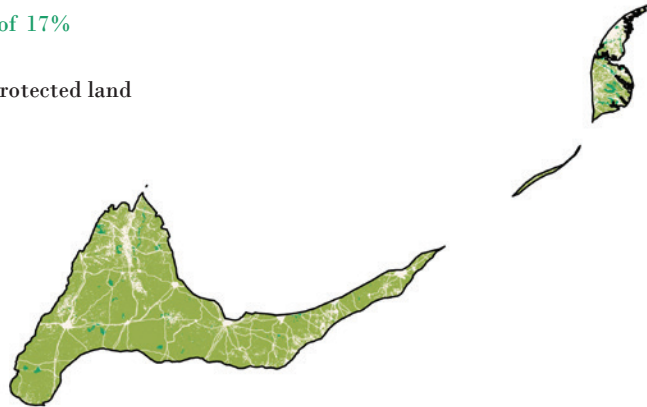
### 14. South Florida Rocklands

- 942 km<sup>2</sup> remnant habitat
- To reach Aichi Target of 17%
- + 302 km<sup>2</sup> protected land



### 15. Southeastern Mixed Forests

- 143,909 km<sup>2</sup> remnant habitat
- To reach Aichi Target of 17%
- + 25,842 km<sup>2</sup> protected land



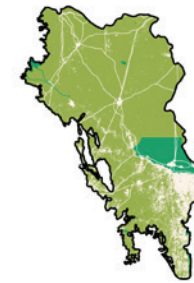
### 16. Tamaulipan Matorral

- 12,717 km<sup>2</sup> remnant habitat
- To reach Aichi Target of 17%
- + 1,928 km<sup>2</sup> protected land



### 17. Tamaulipan Mezquital

- 113,950 km<sup>2</sup> remnant habitat
- To reach Aichi Target of 17%
- + 13,007 km<sup>2</sup> protected land



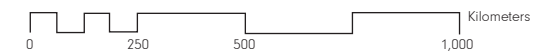
### 18. Texas Blackland Prairies

- 32,634 km<sup>2</sup> remnant habitat
- To reach Aichi Target of 17%
- + 7,786 km<sup>2</sup> protected land



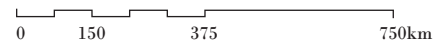
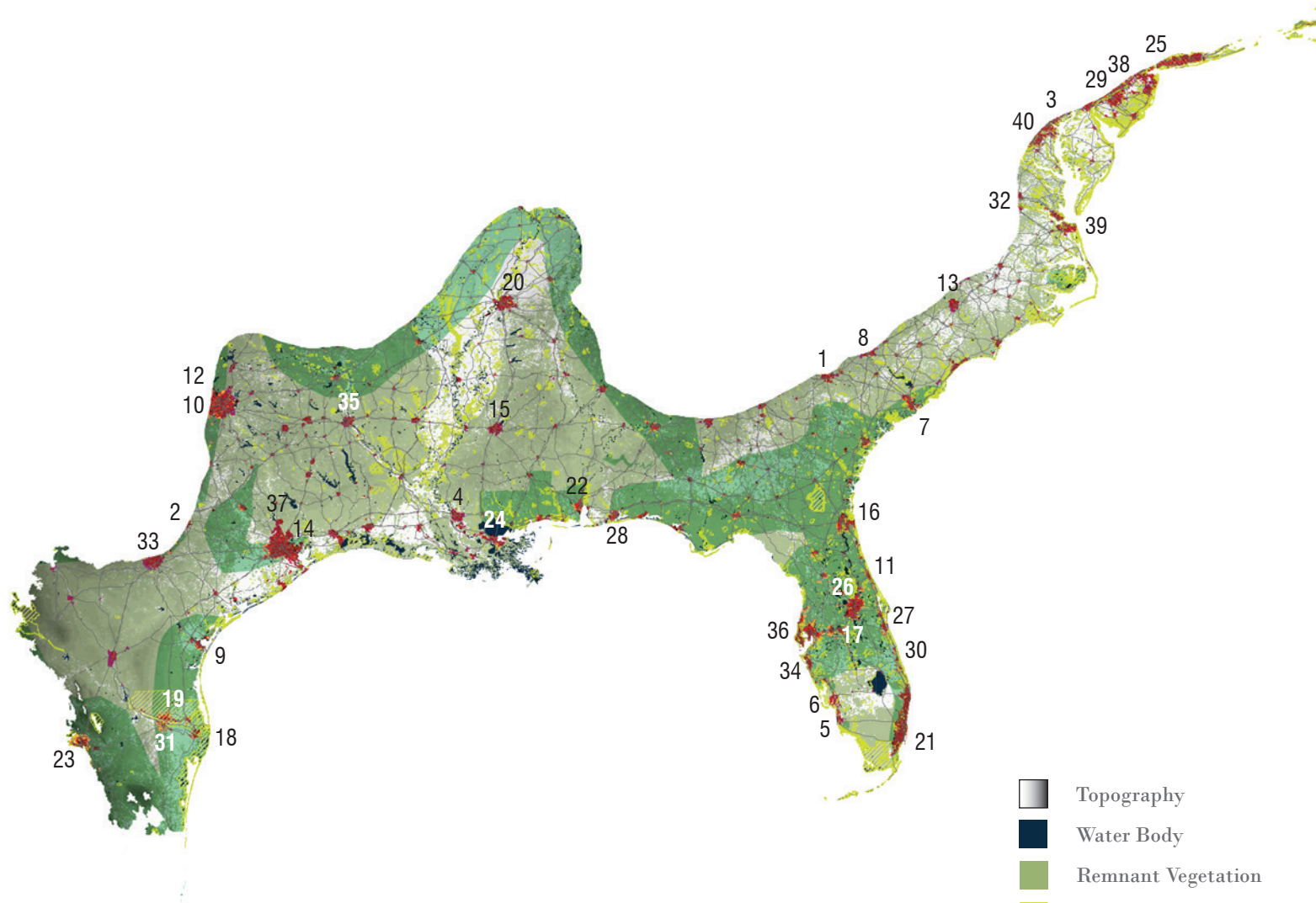
### 19. Western Gulf Coastal Grasslands

- 38,164 km<sup>2</sup> remnant habitat
- To reach Aichi Target of 17%
- + 10,611 km<sup>2</sup> protected land



# NORTH AMERICAN COASTAL PLAIN | CONFLICTS

Conflicts between 2030 projected urban growth areas and threatened species habitats



**78,086,000 Population**

2015 URBAN POPULATION

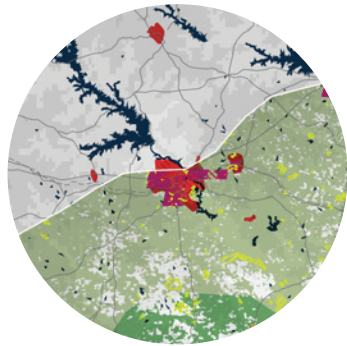
90,257,000  
2030 URBAN POPULATION

27  
THREATENED SPECIES

MAJOR CROPS  
soybeans, maize, wheat, cotton, sorghum

BIODIVERSITY THREATS  
Natural Fire Suppression  
Deforestation  
Urban Expansion and Industrialization  
Infrastructure  
Agricultural Expansion

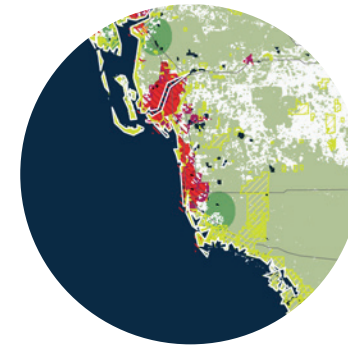
- Topography
- Water Body
- Remnant Vegetation
- Protected Area
- Threatened Species Habitat
- Existing Urban Area
- Urban Growth Projection
- Conflict Zone
- Extreme Conflict Zone



**1. AUGUSTA-  
RICHMOND COUNTY, U.S.**

POPULATION PROJECTIONS:

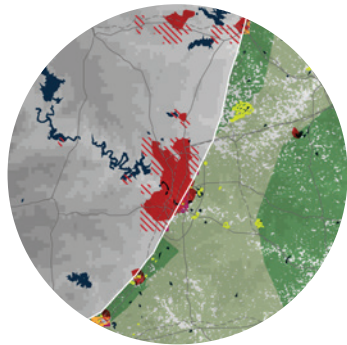
<u>2015:</u>	<u>2030:</u>
415,000	495,000



**5. BONITA SPRINGS-NAPLES, U.S.**

POPULATION PROJECTIONS:

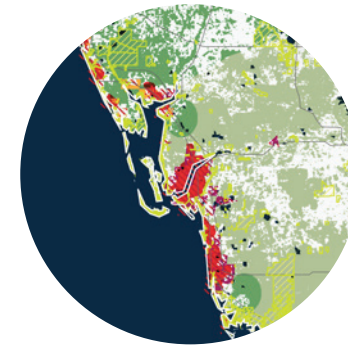
<u>2015:</u>	<u>2030:</u>
369,000	477,000



**2. AUSTIN, U.S.**

POPULATION PROJECTIONS:

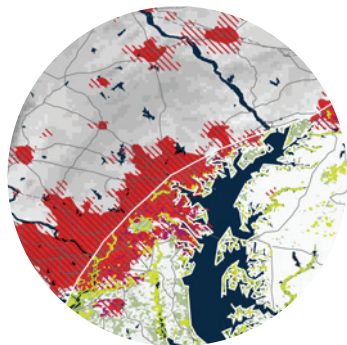
<u>2015:</u>	<u>2030:</u>
1,684,000	2,182,000



**6. CAPE CORAL, U.S.**

POPULATION PROJECTIONS:

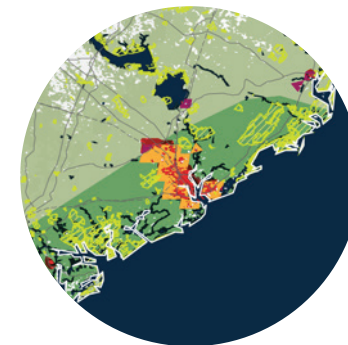
<u>2015:</u>	<u>2030:</u>
677,000	913,000



**3. BALTIMORE, U.S.**

POPULATION PROJECTIONS:

<u>2015:</u>	<u>2030:</u>
2,267,000	2,543,000

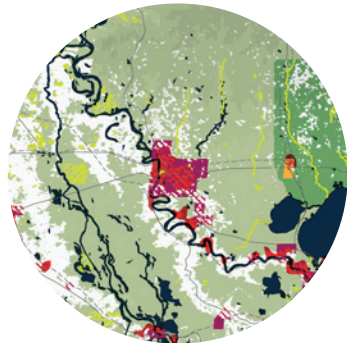


**7. CHARLESTON-  
NORTH CHARLESTON, U.S.**

POPULATION PROJECTIONS:

<u>2015:</u>	<u>2030:</u>
626,000	776,000

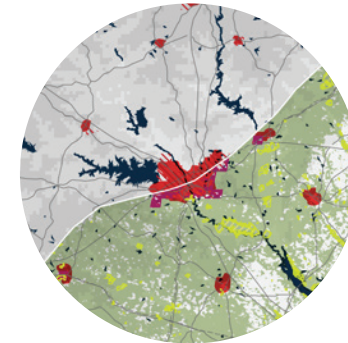
-  Topography
-  Water Body
-  Remnant Vegetation
-  Protected Area
-  Threatened Species Habitat
-  Existing Urban Area
-  Urban Growth Projection
-  Conflict Zone
-  Extreme Conflict Zone



**4. BATON ROUGE, U.S.**

POPULATION PROJECTIONS:

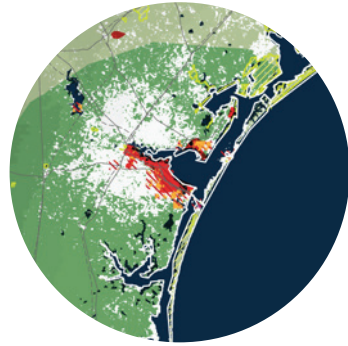
<u>2015:</u>	<u>2030:</u>
663,000	808,000



**8. COLUMBIA, SC, U.S.**

POPULATION PROJECTIONS:

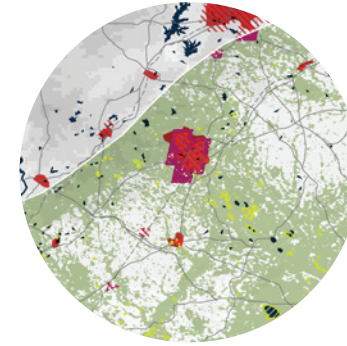
<u>2015:</u>	<u>2030:</u>
630,000	785,000



**9. CORPUS CHRISTI, U.S.**

POPULATION PROJECTIONS:

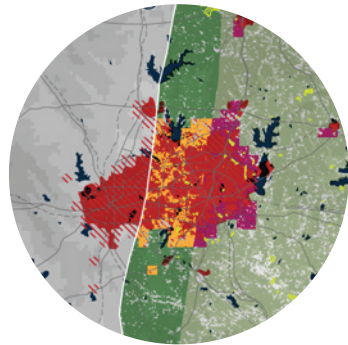
<u>2015:</u>	<u>2030:</u>
334,000	391,000



**13. FAYETTEVILLE, U.S.**

POPULATION PROJECTIONS:

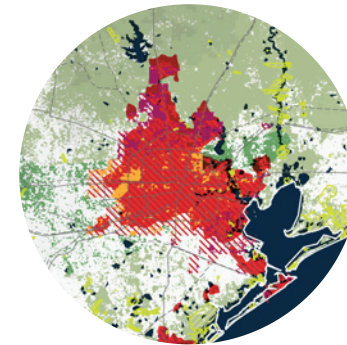
<u>2015:</u>	<u>2030:</u>
329,000	390,000



**10. DALLAS-FORT WORTH, U.S.**

POPULATION PROJECTIONS:

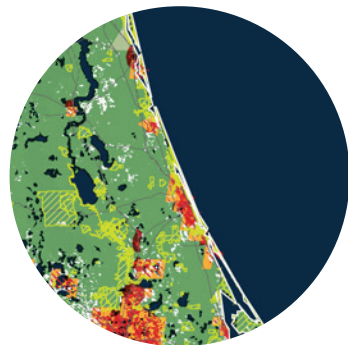
<u>2015:</u>	<u>2030:</u>
5,703,000	6,683,000



**14. HOUSTON, U.S.**

POPULATION PROJECTIONS:

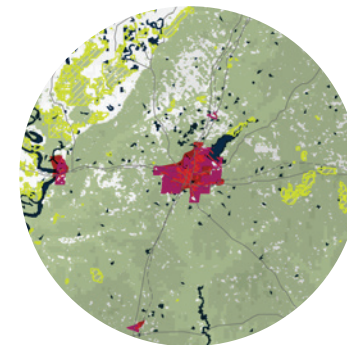
<u>2015:</u>	<u>2030:</u>
5,638,000	6,729,000



**11. DAYTONA BEACH-  
PORT ORANGE, U.S.**

POPULATION PROJECTIONS:

<u>2015:</u>	<u>2030:</u>
410,000	523,000

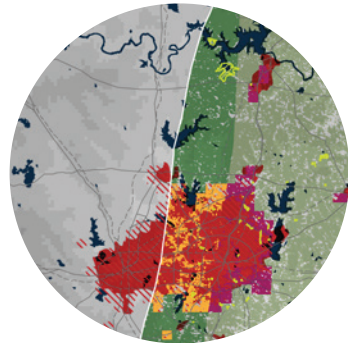


**15. JACKSON, MS, U.S.**

POPULATION PROJECTIONS:

<u>2015:</u>	<u>2030:</u>
386,000	468,000

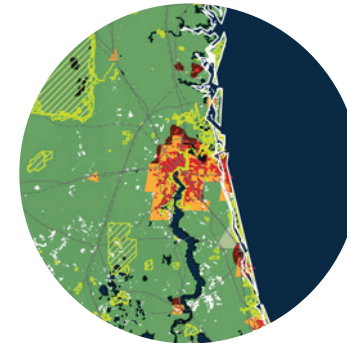
-  Topography
-  Water Body
-  Remnant Vegetation
-  Protected Area
-  Threatened Species Habitat
-  Existing Urban Area
-  Urban Growth Projection
-  Conflict Zone
-  Extreme Conflict Zone



**12. DENTON-LEWISVILLE, U.S.**

POPULATION PROJECTIONS:

<u>2015:</u>	<u>2030:</u>
405,000	495,000

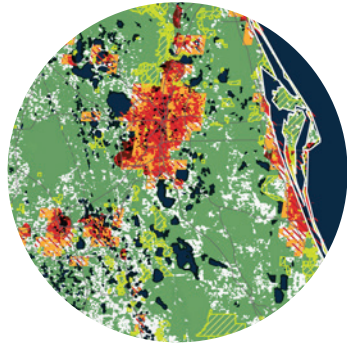


**16. JACKSONVILLE, FL, U.S.**

POPULATION PROJECTIONS:

<u>2015:</u>	<u>2030:</u>
1,172,000	1,398,000

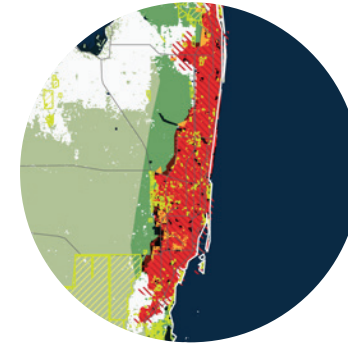




**17. KISSIMMEE, U.S.**

POPULATION PROJECTIONS:

<u>2015:</u>	<u>2030:</u>
411,000	569,000



**21. MIAMI, U.S.**

POPULATION PROJECTIONS:

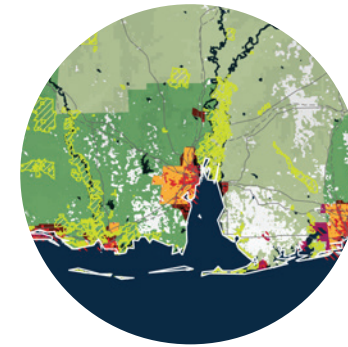
<u>2015:</u>	<u>2030:</u>
5,817,000	6,554,000



**18. MATAMOROS, MEXICO**

POPULATION PROJECTIONS:

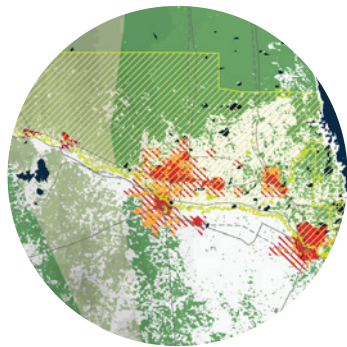
<u>2015:</u>	<u>2030:</u>
528,000	653,000



**22. MOBILE, U.S.**

POPULATION PROJECTIONS:

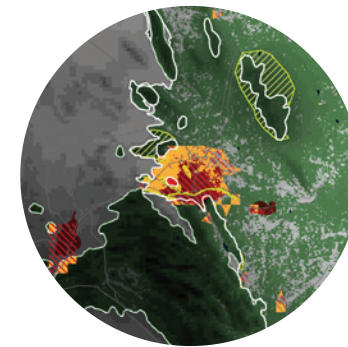
<u>2015:</u>	<u>2030:</u>
330,000	378,000



**19. MCALLEN, U.S.**

POPULATION PROJECTIONS:

<u>2015:</u>	<u>2030:</u>
864,000	1,096,000



**23. MONTERREY, MEXICO**

POPULATION PROJECTIONS:

<u>2015:</u>	<u>2030:</u>
4,513,000	5,471,000

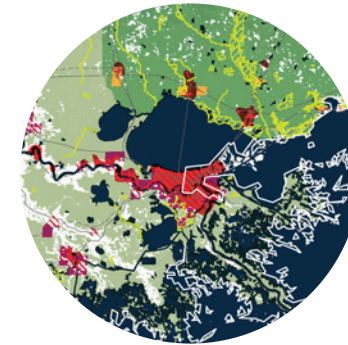
-  Topography
-  Water Body
-  Remnant Vegetation
-  Protected Area
-  Threatened Species Habitat
-  Existing Urban Area
-  Urban Growth Projection
-  Conflict Zone
-  Extreme Conflict Zone



**20. MEMPHIS, U.S.**

POPULATION PROJECTIONS:

<u>2015:</u>	<u>2030:</u>
1,106,000	1,269,000



**24. NEW ORLEANS, U.S.**

POPULATION PROJECTIONS:

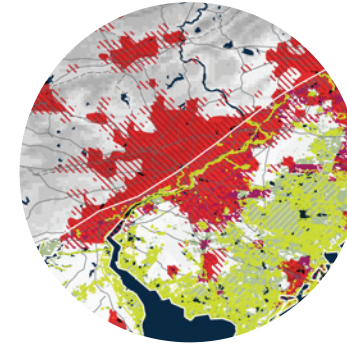
<u>2015:</u>	<u>2030:</u>
921,000	1,046,000



**25. NEW YORK-NEWARK, U.S.**

POPULATION PROJECTIONS:

<u>2015:</u>	<u>2030:</u>
18,593,000	19,885,000



**29. PHILADELPHIA, U.S.**

POPULATION PROJECTIONS:

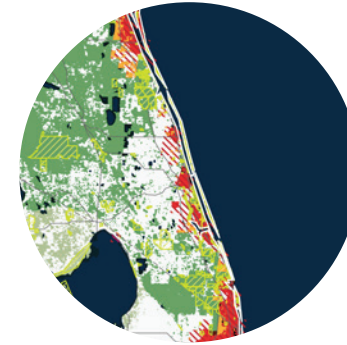
<u>2015:</u>	<u>2030:</u>
5,585,000	6,158,000



**26. ORLANDO, U.S.**

POPULATION PROJECTIONS:

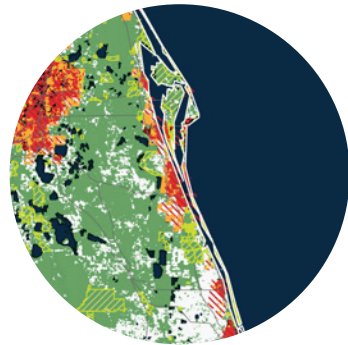
<u>2015:</u>	<u>2030:</u>
1,731,000	2,115,000



**30. PORT ST. LUCIE, U.S.**

POPULATION PROJECTIONS:

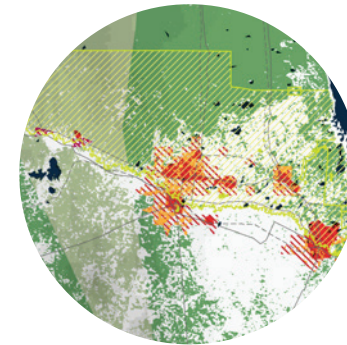
<u>2015:</u>	<u>2030:</u>
445,000	571,000



**27. PALM BAY-MELBOURNE, U.S.**

POPULATION PROJECTIONS:

<u>2015:</u>	<u>2030:</u>
486,000	578,000

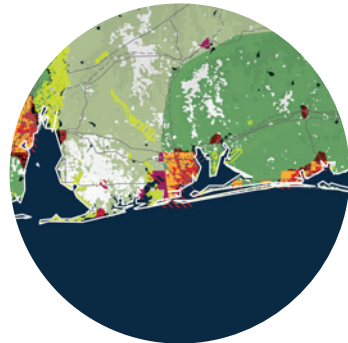


**31. REYNOSA, MEXICO**

POPULATION PROJECTIONS:

<u>2015:</u>	<u>2030:</u>
853,000	1,117,000

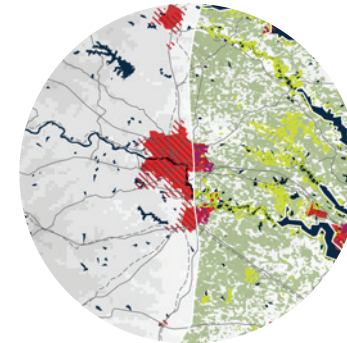
-  Topography
-  Water Body
-  Remnant Vegetation
-  Protected Area
-  Threatened Species Habitat
-  Existing Urban Area
-  Urban Growth Projection
-  Conflict Zone
-  Extreme Conflict Zone



**28. PENSACOLA, U.S.**

POPULATION PROJECTIONS:

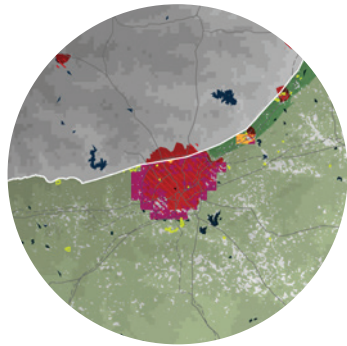
<u>2015:</u>	<u>2030:</u>
348,000	401,000



**32. RICHMOND, U.S.**

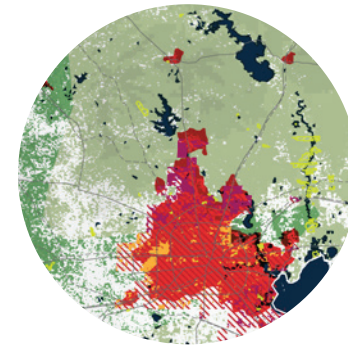
POPULATION PROJECTIONS:

<u>2015:</u>	<u>2030:</u>
1,030,000	1,214,000



**33. SAN ANTONIO, U.S.**

POPULATION PROJECTIONS:  
2015:            2030:  
 2,030,000        2,488,000



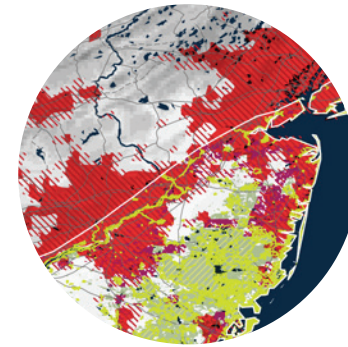
**37. THE WOODLANDS, U.S.**

POPULATION PROJECTIONS:  
2015:            2030:  
 400,000            666,000



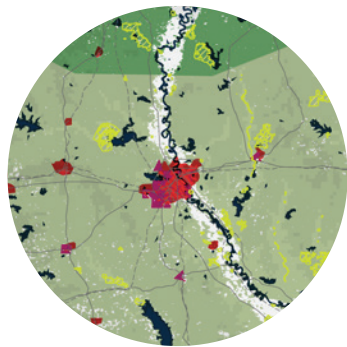
**34. SARASOTA-BRADENTON, U.S.**

POPULATION PROJECTIONS:  
2015:            2030:  
 690,000            815,000



**38. TRENTON, U.S.**

POPULATION PROJECTIONS:  
2015:            2030:  
 313,000            370,000



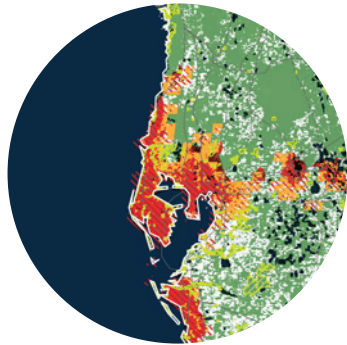
**35. SHREVEPORT, U.S.**

POPULATION PROJECTIONS:  
2015:            2030:  
 310,000            363,000



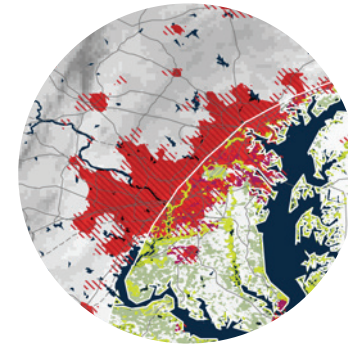
**39. VIRGINIA BEACH, U.S.**

POPULATION PROJECTIONS:  
2015:            2030:  
 1,460,000          1,632,000



**36. TAMPA-ST. PETERSBURG, U.S.**

POPULATION PROJECTIONS:  
2015:            2030:  
 2,659,000          3,105,000



**40. WASHINGTON, D.C., U.S.**

POPULATION PROJECTIONS:  
2015:            2030:  
 4,955,000          5,690,000

-  Topography
-  Water Body
-  Remnant Vegetation
-  Protected Area
-  Threatened Species Habitat
-  Existing Urban Area
-  Urban Growth Projection
-  Conflict Zone
-  Extreme Conflict Zone