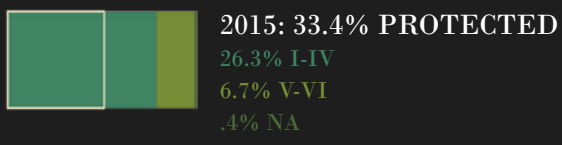


# NEW ZEALAND

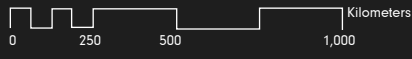
488,327 km<sup>2</sup>

## BIODIVERSITY TARGET

2020 TARGET: 17% protected

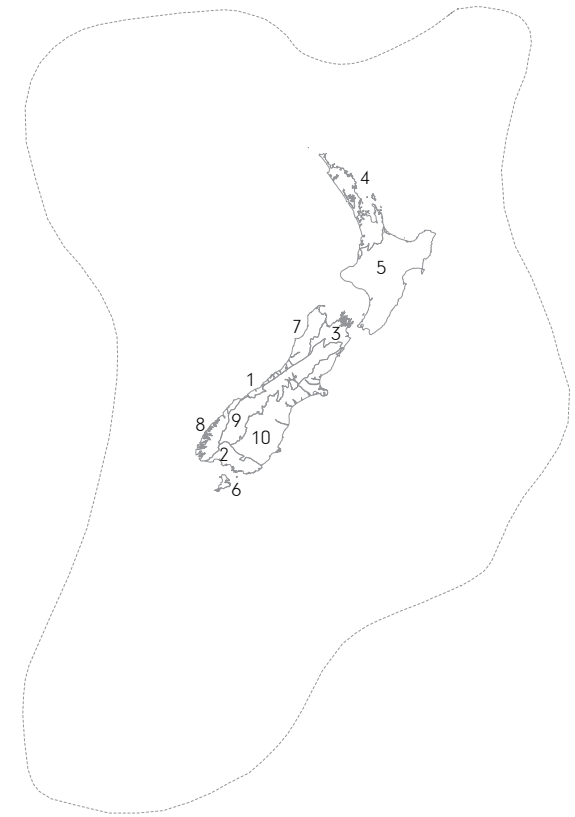
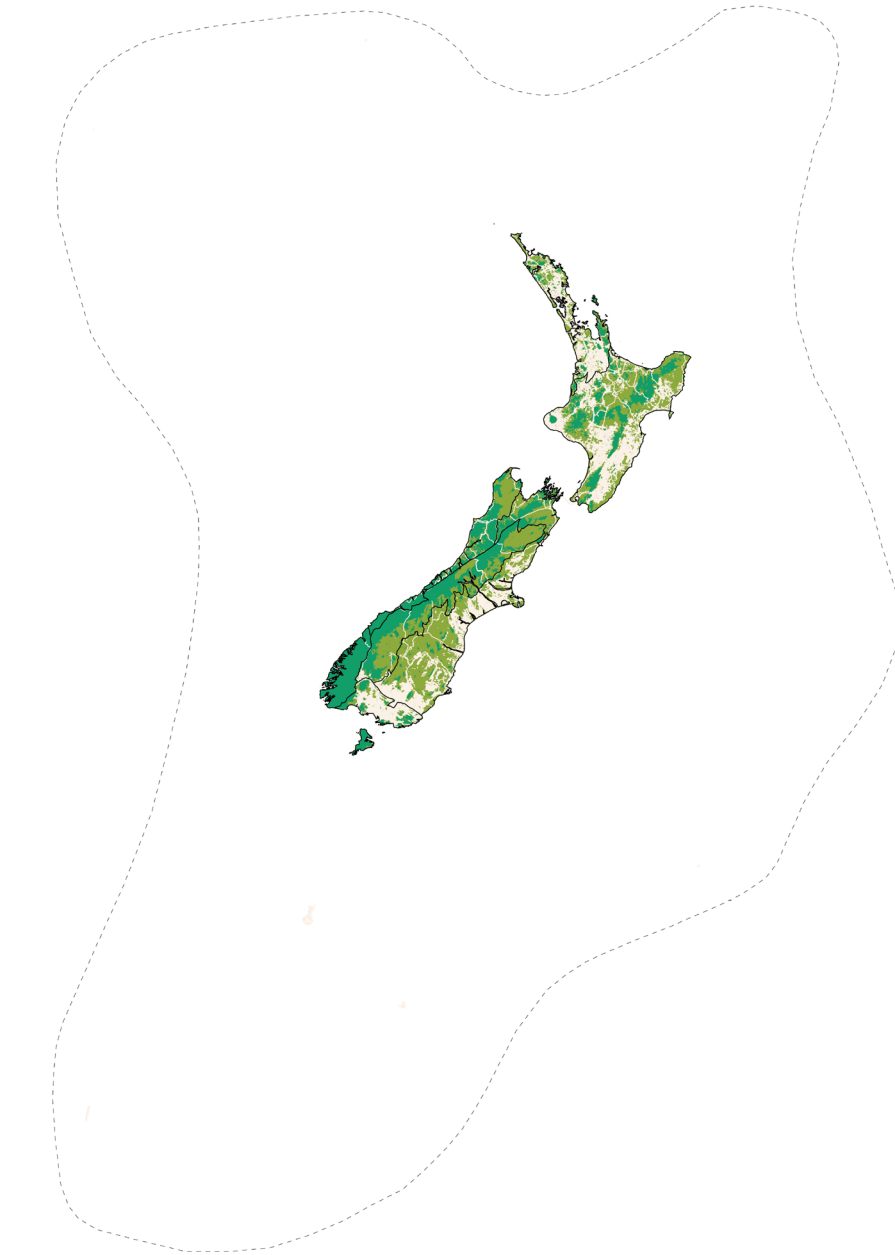


- New Zealand Hotspot
- Neighboring Hotspot
- Protected Area (IUCN Category I-IV)
- Protected Area (IUCN Category V-VI)
- Protected Area (IUCN Category NA)
- Urban Area
- Agriculture (0-100% landuse)
- Roads
- Railroads



# NEW ZEALAND ECOREGIONS

Shortfall Assessment to reach Target of 17% protected land in each terrestrial ecoregion



Norfolk Island (Australia), New Zealand

## 4 BIOMES

- Montane Grasslands & Shrublands
- Temperate Broadleaf & Mixed Forests
- Temperate Grasslands, Savannas & Shrublands
- Tundra

## 10 ECOREGIONS

### ENDEMIC PLANT SPECIES

1,865

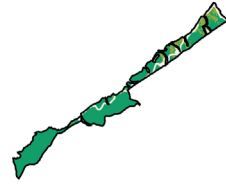
### ENDEMIC ANIMAL SPECIES

155

### 1. Westland Temperate Forests

■ 1,472 km<sup>2</sup> remnant habitat

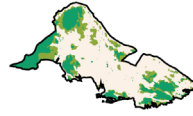
Target reached



### 2. South Island Temperate Forests

■ 4,216 km<sup>2</sup> remnant habitat

Target reached



### 3. Richmond Temperate Forests

■ 13,780 km<sup>2</sup> remnant habitat

Target reached



### 4. Northland Temperate Kauri Forests

■ 15,914 km<sup>2</sup> remnant habitat

To reach Aichi Target of 17%

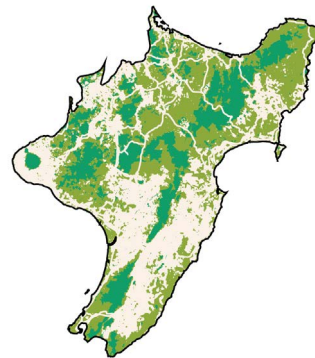
■ +2,322 km<sup>2</sup> protected areas



### 5. North Island Temperate Forests

■ 60,068 km<sup>2</sup> remnant habitat

Target reached



### 6. Raikura Island Temperate Forests

■ 224 km<sup>2</sup> remnant habitat

Target reached



### 7. Nelson Coast Temperate Forests

■ 12,854 km<sup>2</sup> remnant habitat

Target reached



### 8. Fiordland Temperate Forests

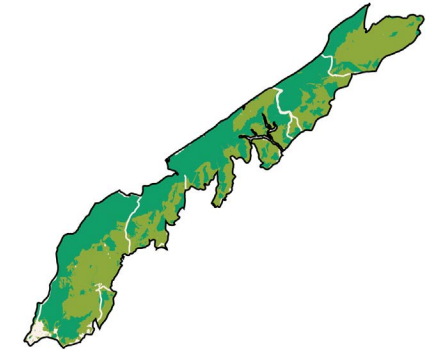
Target reached



### 9. South Island Montane Grasslands

■ 37,223 km<sup>2</sup> remnant habitat

Target reached

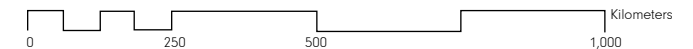
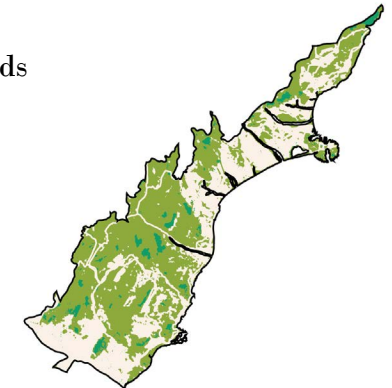


### 10. Canterbury-Otago Tussock Grasslands

■ 59,983 km<sup>2</sup> remnant habitat

To reach Aichi Target of 17%

■ +13,620 km<sup>2</sup> protected areas



# NEW ZEALAND | CONFLICTS

Conflicts between 2030 projected urban growth areas and threatened species habitats



1,696,000 Population

2015 URBAN POPULATION

1,971,000

2030 URBAN POPULATION

11

THREATENED SPECIES

MAJOR CROPS

beets, barley, wheat, potatoes

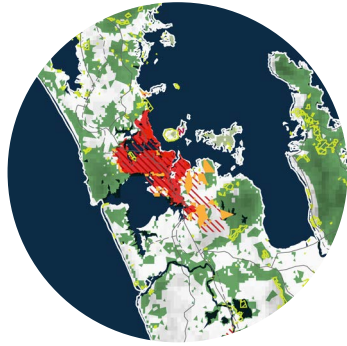
BIODIVERSITY THREATS

Agricultural Expansion

Urban Development

Climate Change

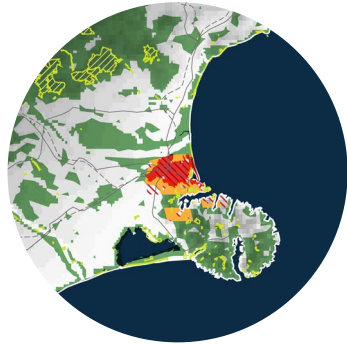
0 100 250 500km



## 1. AUCKLAND, NEW ZEALAND

POPULATION PROJECTIONS:

2015:	2030:
1,344,000	1,574,000



## 2. CHRISTCHURCH, NEW ZEALAND

POPULATION PROJECTIONS:

2015:	2030:
351,000	398,000

-  Topography
-  Water Body
-  Remnant Vegetation
-  Protected Area
-  Threatened Species Habitat
-  Existing Urban Area
-  Urban Growth Projection
-  Conflict Zone
-  Extreme Conflict Zone