

MOUNTAINS OF SOUTHWEST CHINA

346,608 km²



BIODIVERSITY TARGET

2020 TARGET: 17% protected



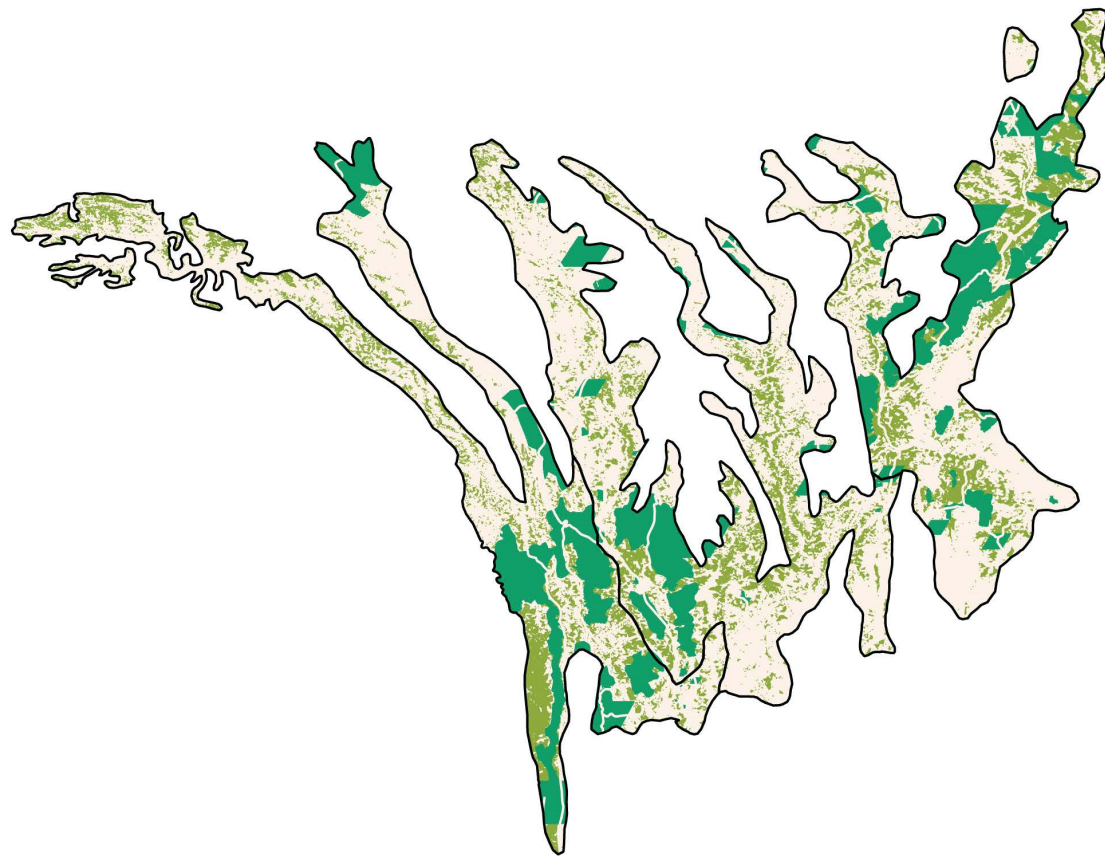
2015: 15.8% PROTECTED

9.7% V-VI
6.1% NA

- Mountains of Southwest China Hotspot
- Neighboring Hotspot
- Protected Area (IUCN Category I-IV)
- Protected Area (IUCN Category V-VI)
- Protected Area (IUCN Category NA)
- Urban Area
- Agriculture (0-100% landuse)
- Roads
- Railroads

MOUNTAINS OF SOUTHWEST CHINA ECOREGIONS

Shortfall Assessment to reach Target of 17% protected land in each terrestrial ecoregion



China, Myanmar

1 BIOME

Temperate Conifer Forests

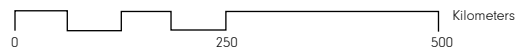
3 ECOREGIONS

ENDEMIC PLANT SPECIES

3,500

ENDEMIC ANIMAL SPECIES

53

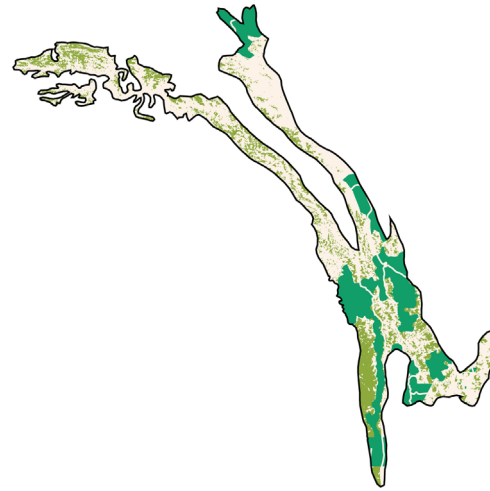


1. Nujian Langcang Alpine Conifer & Mixed Forests



81,877 km² remnant habitat

Target reached

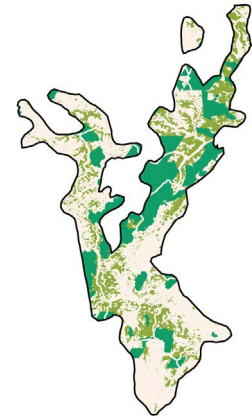


3. Qionglai-Mishan Conifer Forests



76,518 km² remnant habitat

Target reached



2. Hengduan Mountains Subalpine Conifer Forests

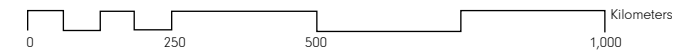
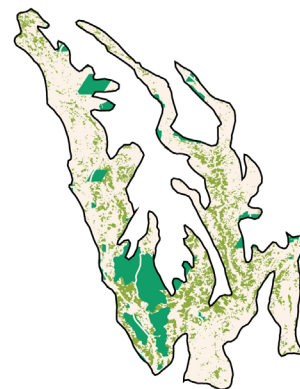


113,169 km² remnant habitat

To reach Aichi Target of 17%

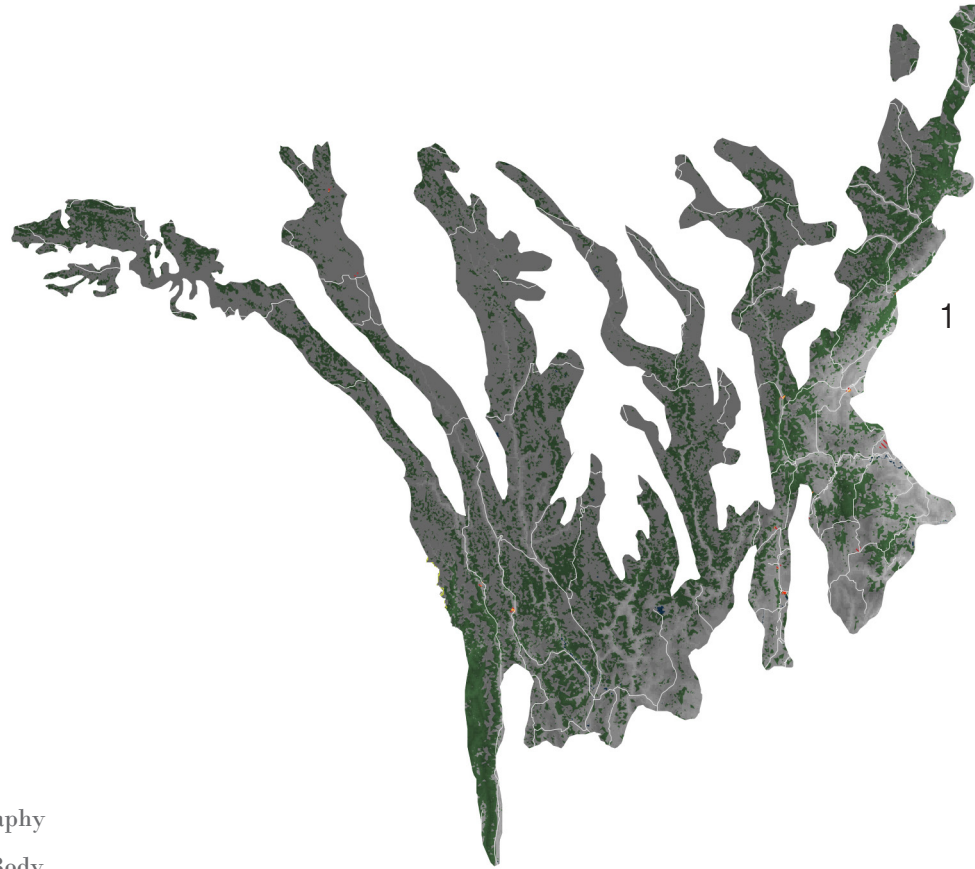


+10,386 km² protected areas

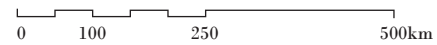


MOUNTAINS OF SOUTHWEST CHINA | CONFLICTS

Conflicts between 2030 projected urban growth areas and threatened species habitats



- Topography
- Water Body
- Remnant Vegetation
- Protected Area
- Threatened Species Habitat
- Existing Urban Area
- Urban Growth Projection
- Conflict Zone
- Extreme Conflict Zone



7,556,000 Population

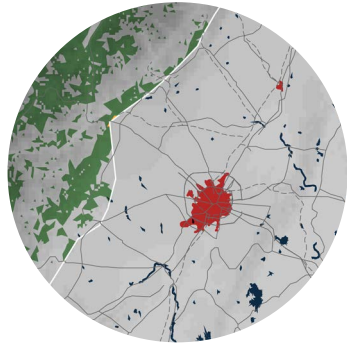
2015 URBAN POPULATION

10,104,000
2030 URBAN POPULATION

66
THREATENED SPECIES

MAJOR CROPS
wheat, maize, rice, soybeans

BIODIVERSITY THREATS
Logging
Infrastructure
Industrialization
Poaching
Dams



1. CHENGDU, CHINA

POPULATION PROJECTIONS:

<u>2015:</u>	<u>2030:</u>
7,556,000	10,104,000

-  Topography
-  Water Body
-  Remnant Vegetation
-  Protected Area
-  Threatened Species Habitat
-  Existing Urban Area
-  Urban Growth Projection
-  Conflict Zone
-  Extreme Conflict Zone