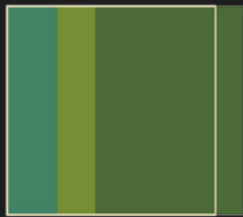


# MESOAMERICA

1,236,453 km<sup>2</sup>

## BIODIVERSITY TARGET

2020 TARGET: 17% protected



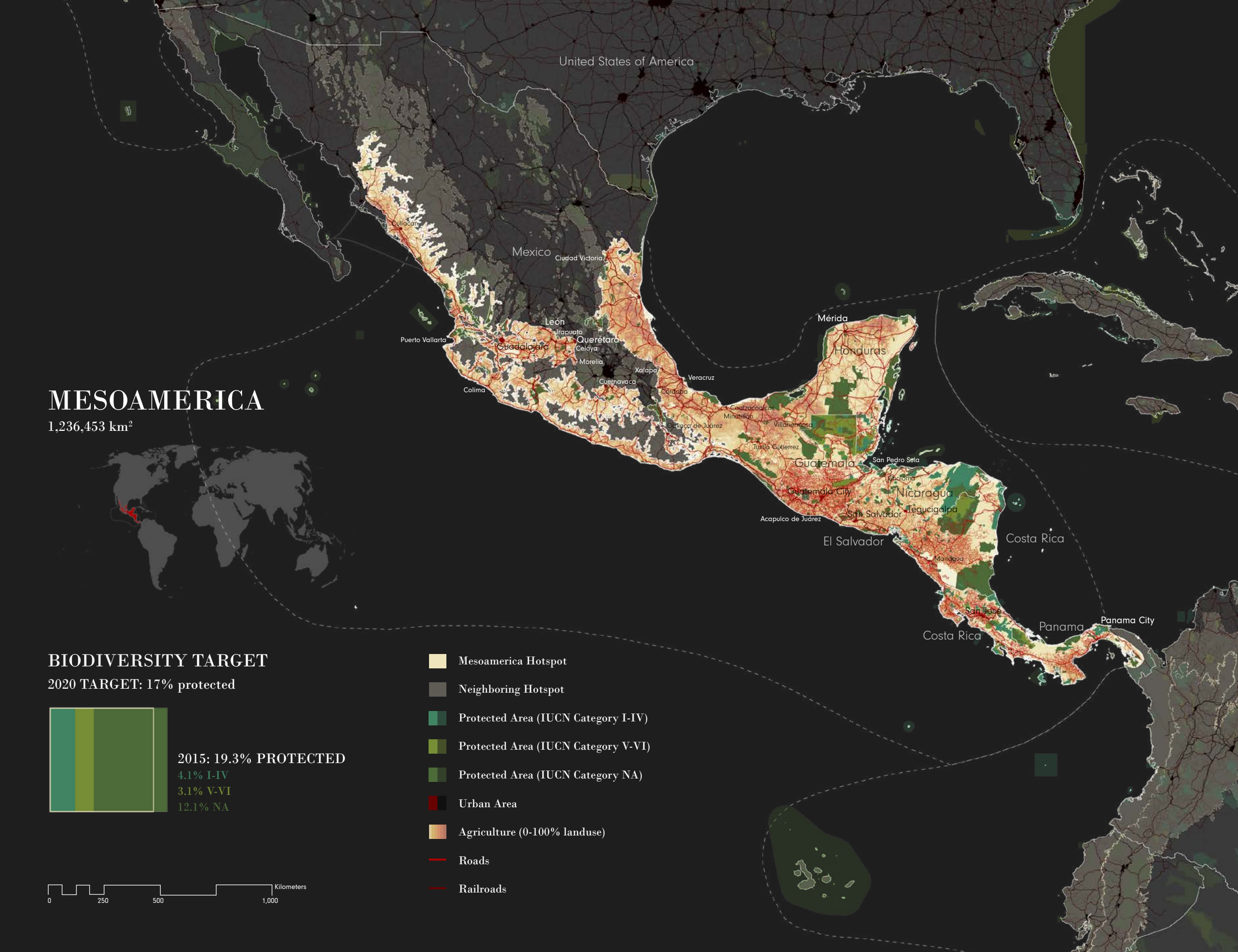
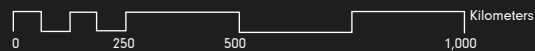
2015: 19.3% PROTECTED

4.1% I-IV

3.1% V-VI

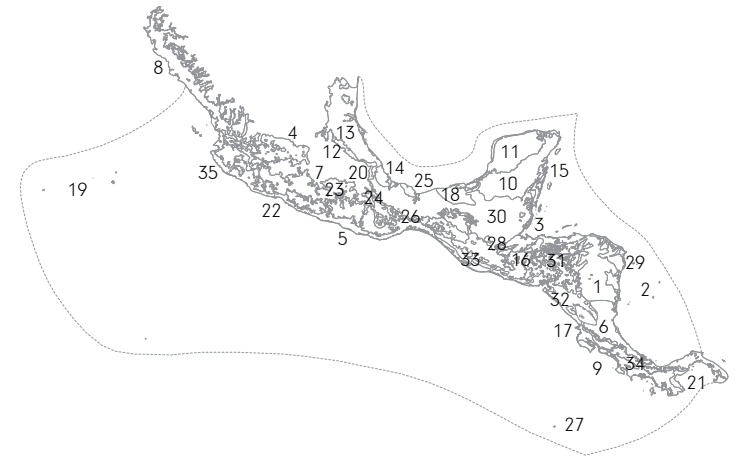
12.1% NA

- Mesoamerica Hotspot
- Neighboring Hotspot
- Protected Area (IUCN Category I-IV)
- Protected Area (IUCN Category V-VI)
- Protected Area (IUCN Category NA)
- Urban Area
- Agriculture (0-100% landuse)
- Roads
- Railroads



# MESOAMERICA ECOREGIONS

Shortfall Assessment to reach Target of 17% protected land in each terrestrial ecoregion



Belize, Colombia, Costa Rica, El Salvador, Clipperton Island (France), Guatemala, Honduras, Mexico, Nicaragua

## 3 BIOMES

Deserts & Xeric Shrublands

Mangroves

Tropical & Subtropical Coniferous Forests

Tropical & Subtropical Dry Broadleaf Forests

Tropical & Subtropical Moist Broadleaf Forests

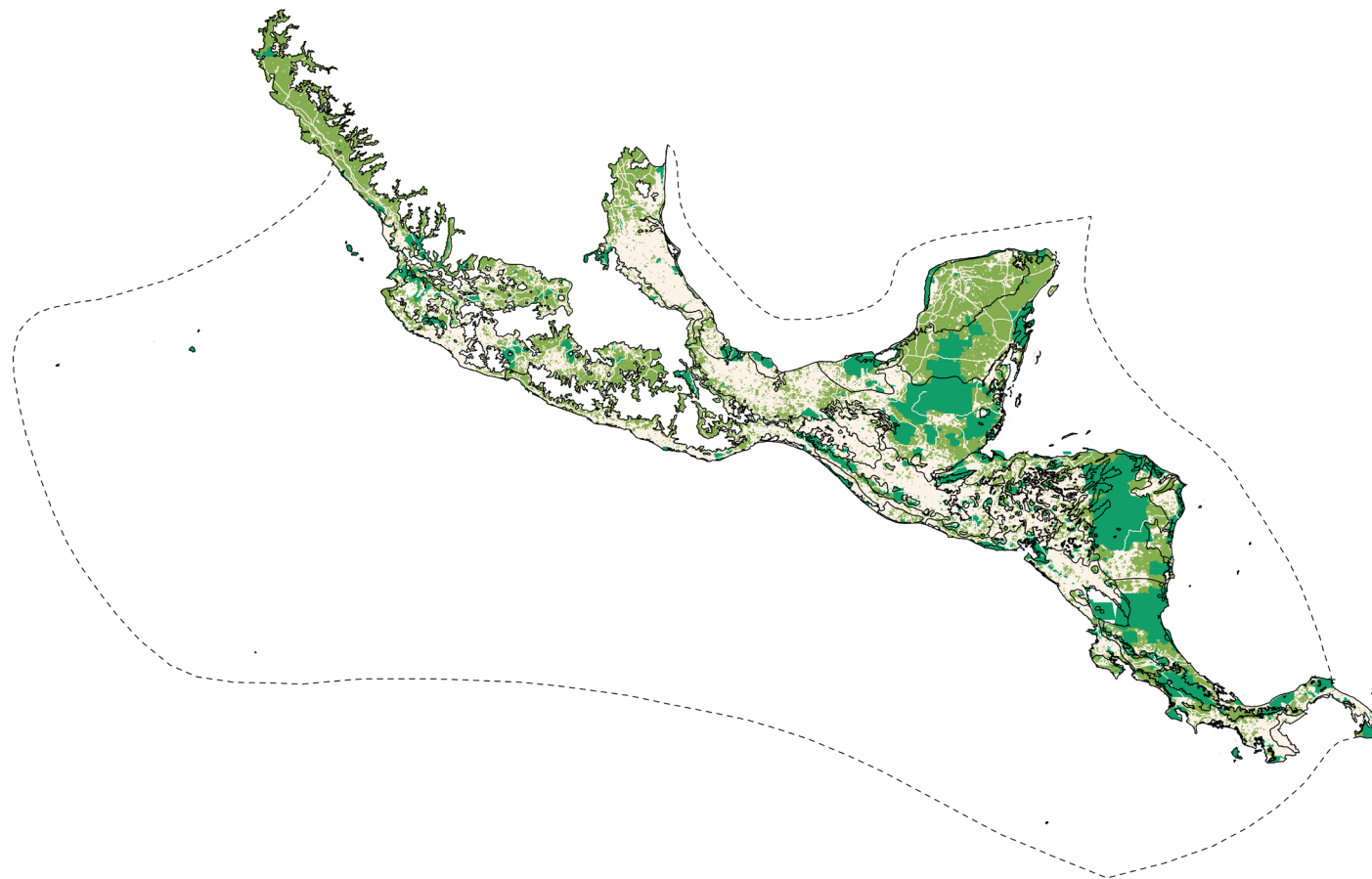
## 35 ECOREGIONS

### ENDEMIC PLANT SPECIES

2,941

### ENDEMIC ANIMAL SPECIES

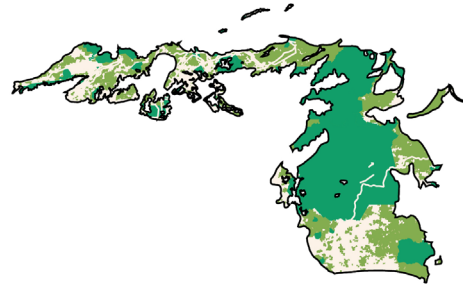
1,212



### 1. Central American Atlantic Moist Forests

23,224 km<sup>2</sup> remnant habitat

Target reached

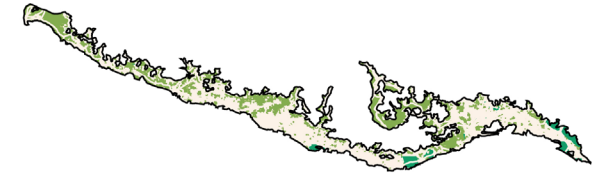


### 5. Southern Pacific Dry Forests

19,483 km<sup>2</sup> remnant habitat

To reach Aichi Target of 17%

+6,515 km<sup>2</sup> protected areas



### 2. Cayos Miskitos San Andrés & Providencia Moist Forests

Target reached



### 3. Belizian Pine Forests

95 km<sup>2</sup> remnant habitat

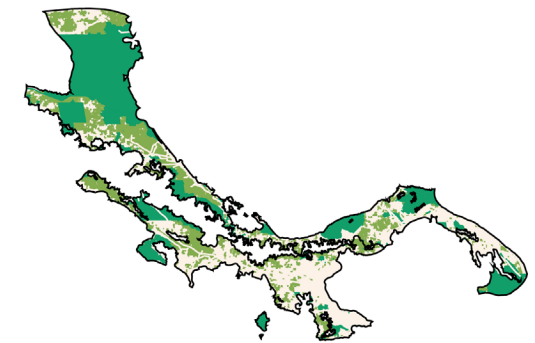
Target reached



### 6. Isthmian-Atlantic Moist Forests

22,373 km<sup>2</sup> remnant habitat

Target reached



### 4. Bajio Dry Forests

25,823 km<sup>2</sup> remnant habitat

To reach Aichi Target of 17%

+6,113 km<sup>2</sup> protected areas

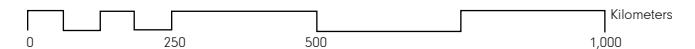
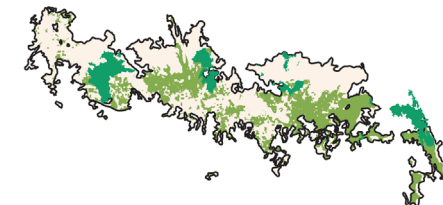


### 7. Balsas Dry Forests

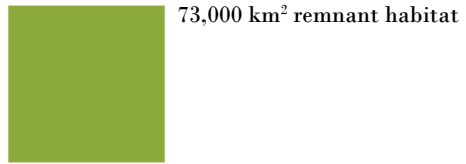
36,284 km<sup>2</sup> remnant habitat

To reach Aichi Target of 17%

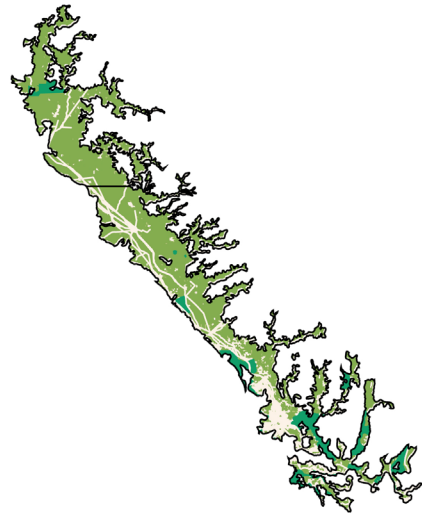
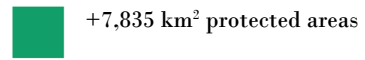
+4,378 km<sup>2</sup> protected areas



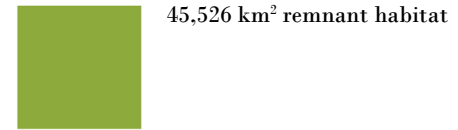
### 8. Sinaloan Dry Forests



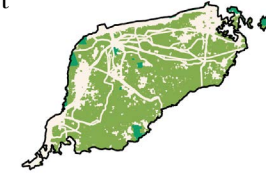
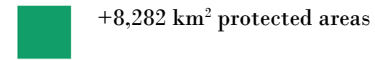
To reach Aichi Target of 17%



### 11. Yucatán Dry Forests



To reach Aichi Target of 17%

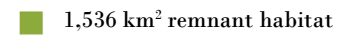


### 9. Southern Mesoamerican Pacific Mangroves

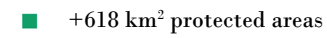
Target reached



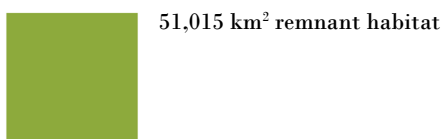
### 12. Veracruz Montane Forests



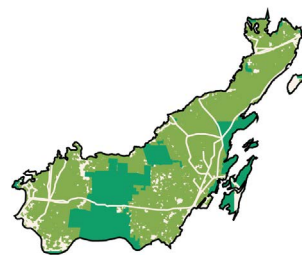
To reach Aichi Target of 17%



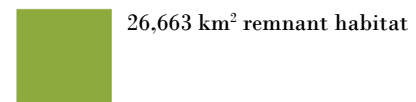
### 10. Yucatán Moist Forests



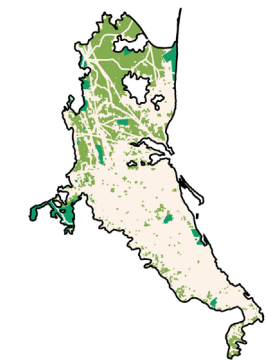
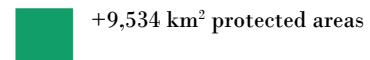
Target reached



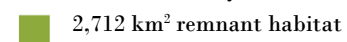
### 13. Veracruz Moist Forests



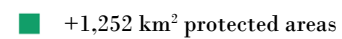
To reach Aichi Target of 17%



### 14. Veracruz Dry Forests



To reach Aichi Target of 17%





### 15. Mesoamerican Gulf-Caribbean Mangroves

Target reached



### 17. Costa Rican Seasonal Moist Forests

5,162 km<sup>2</sup> remnant habitat

To reach Aichi Target of 17%

+641 km<sup>2</sup> protected areas



### 18. Pantanos de Centla

2,051 km<sup>2</sup> remnant habitat

Target reached



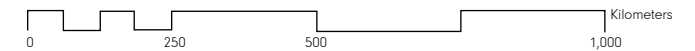
### 16. Central American Montane Forests

Target reached



### 19. Islas Revillagigedo Dry Forests

Target reached



### 20. Oaxacan Montane Forests

■ 4,167 km<sup>2</sup> remnant habitat

To reach Aichi Target of 17%

■ +1,234 km<sup>2</sup> protected areas



### 23. Chiapas-Depression Dry Forests

■ 912 km<sup>2</sup> remnant habitat

To reach Aichi Target of 17%

■ +2,187 km<sup>2</sup> protected areas



### 26. Chimalapas Montane Forests

■ 829 km<sup>2</sup> remnant habitat

To reach Aichi Target of 17%

■ +236 km<sup>2</sup> protected areas



### 21. Panamanian Dry Forests

■ 408 km<sup>2</sup> remnant habitat

To reach Aichi Target of 17%

■ +802 km<sup>2</sup> protected areas



### 24. Chiapas Montane Forests

■ 1,258 km<sup>2</sup> remnant habitat

To reach Aichi Target of 17%

■ +783 km<sup>2</sup> protected areas



### 27. Cocos Island Moist Forests

Target reached



### 25. Sierra de los Tuxtlas

Target reached



### 28. Motagua Valley Thornscrub

Target reached



### 22. Northern Mesoamerican Pacific Mangroves

■ 466 km<sup>2</sup> remnant habitat

To reach Aichi Target of 17%

■ +167 km<sup>2</sup> protected areas



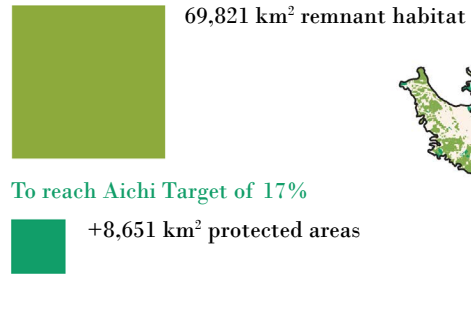
### 29. Miskito Pine Forests

■ 4,232 km<sup>2</sup> remnant habitat

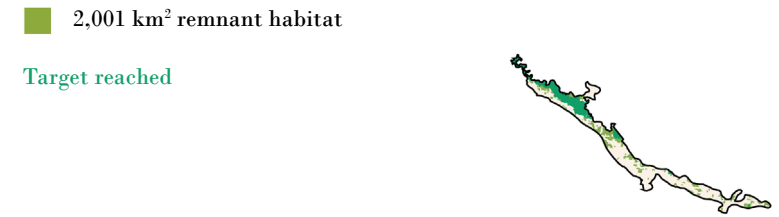
Target reached



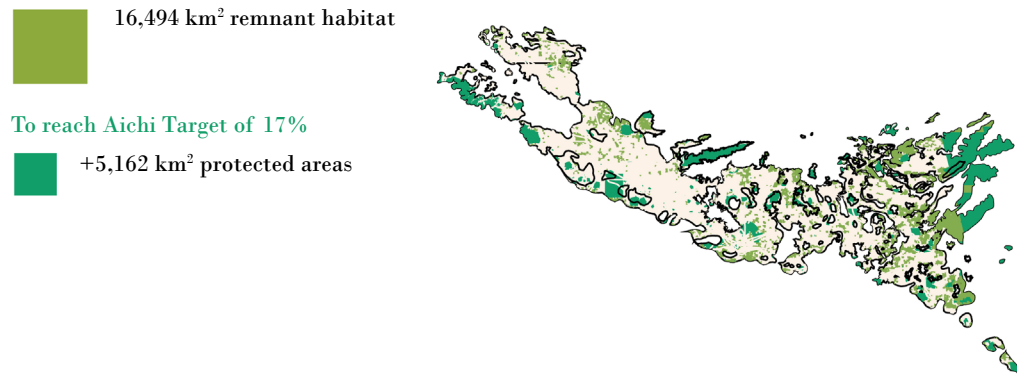
### 30. Petén-Veracruz Moist Forests



### 33. Sierra Madre de Chiapas Moist Forests



### 31. Central American Pine-Oak Forests



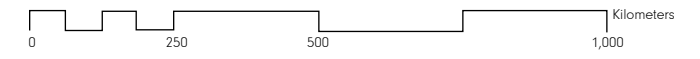
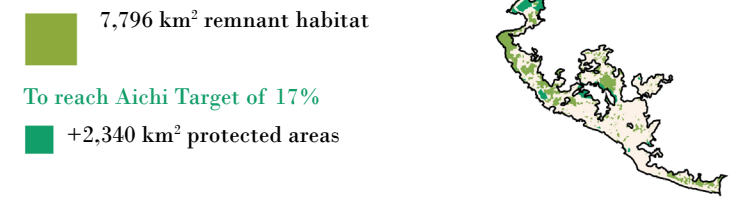
### 34. Talamancan Montane Forests



### 32. Central American Dry Forests

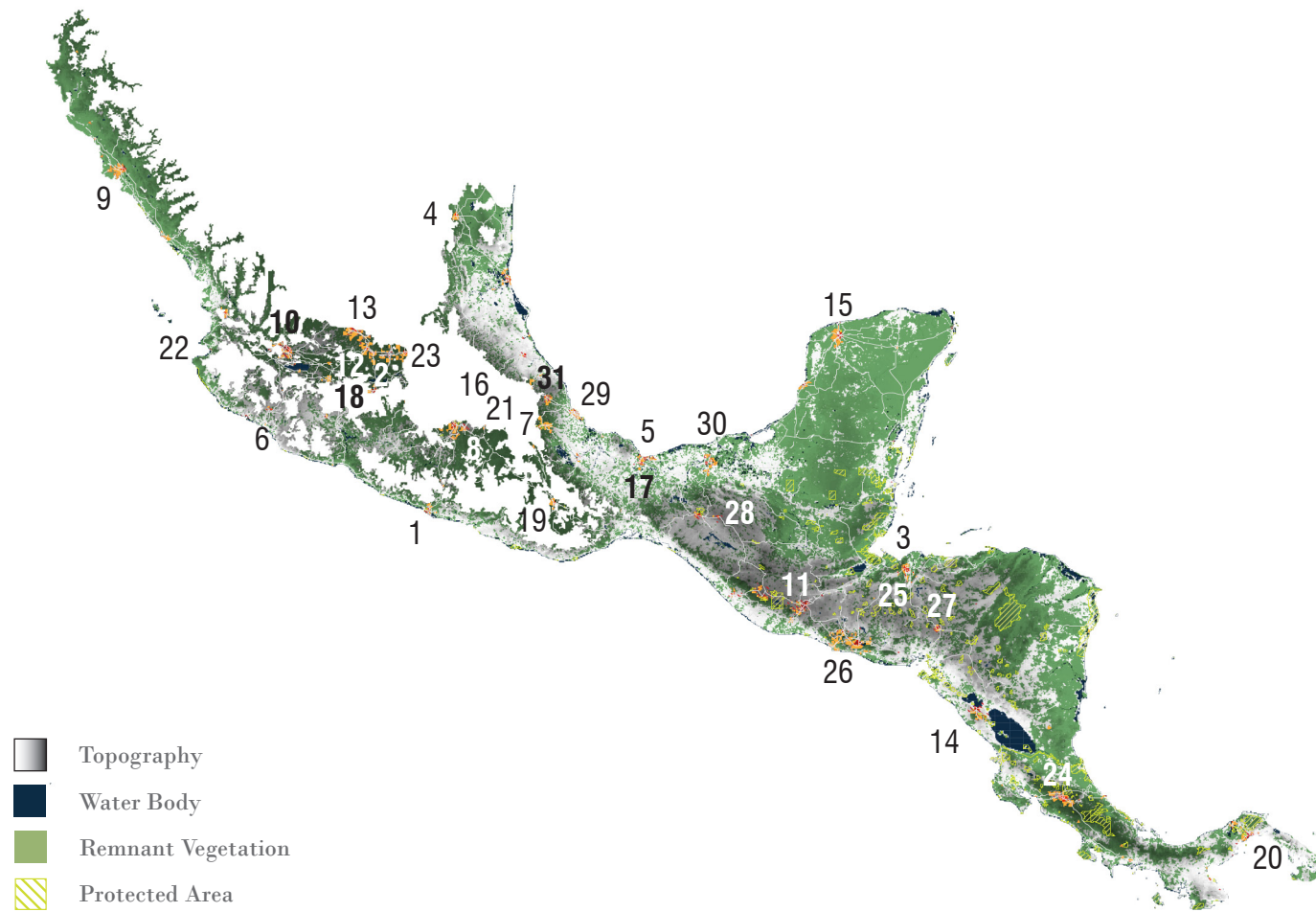


### 35. Jalisco Dry Forests



# MESOAMERICA | CONFLICTS

Conflicts between 2030 projected urban growth areas and threatened species habitats



**30,041,000 Population**

2015 URBAN POPULATION

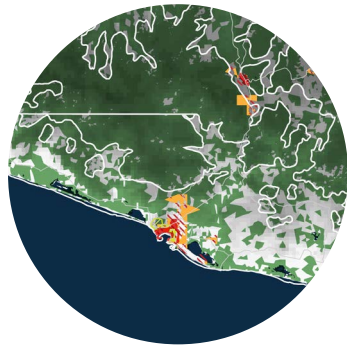
39,195,000  
2030 URBAN POPULATION

398  
THREATENED SPECIES

MAJOR CROPS  
maize, sugar cane, coffee, rice

BIODIVERSITY THREATS  
Deforestation  
Agriculture  
Infrastructure Development  
Tourism  
Hydroelectric Dams  
Mining

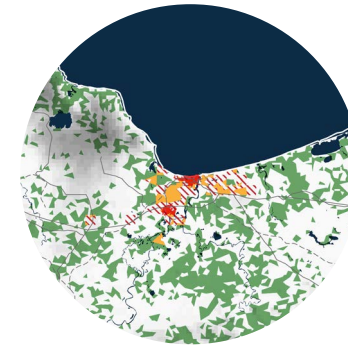




**1. ACAPULCO DE JUAREZ, MEXICO**

POPULATION PROJECTIONS:

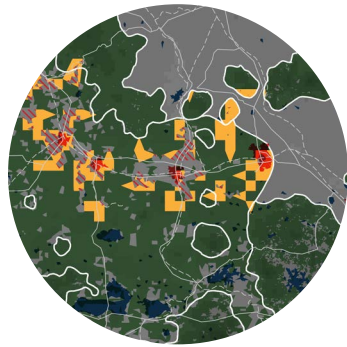
<u>2015:</u>	<u>2030:</u>
900,000	1,075,000



**5. COATZACOALCOS, MEXICO**

POPULATION PROJECTIONS:

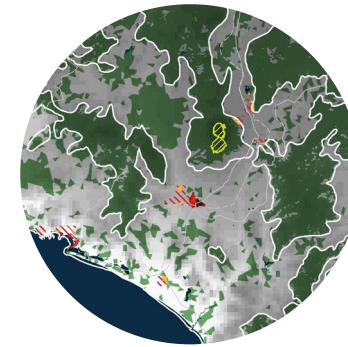
<u>2015:</u>	<u>2030:</u>
368,000	452,000



**2. CELAYA, MEXICO**

POPULATION PROJECTIONS:

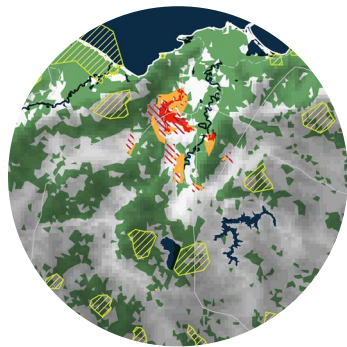
<u>2015:</u>	<u>2030:</u>
661,000	826,000



**6. COLIMA, MEXICO**

POPULATION PROJECTIONS:

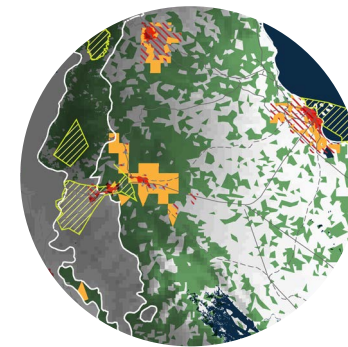
<u>2015:</u>	<u>2030:</u>
367,000	463,000



**3. CHOLOMA, HONDURAS**

POPULATION PROJECTIONS:

<u>2015:</u>	<u>2030:</u>
453,000	850,000

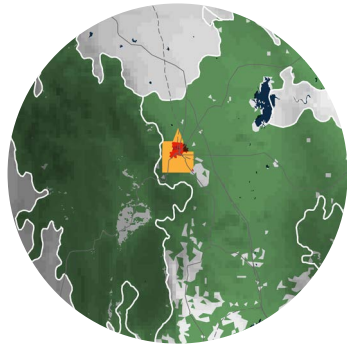


**7. CORDOBA, MEXICO**

POPULATION PROJECTIONS:

<u>2015:</u>	<u>2030:</u>
337,000	416,000

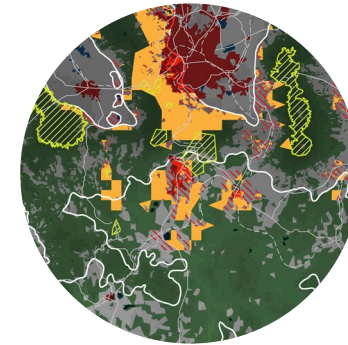
-  Topography
-  Water Body
-  Remnant Vegetation
-  Protected Area
-  Threatened Species Habitat
-  Existing Urban Area
-  Urban Growth Projection
-  Conflict Zone
-  Extreme Conflict Zone



**4. CIUDAD VICTORIA, MEXICO**

POPULATION PROJECTIONS:

<u>2015:</u>	<u>2030:</u>
337,000	427,000



**8. CUERNAVACA, MEXICO**

POPULATION PROJECTIONS:

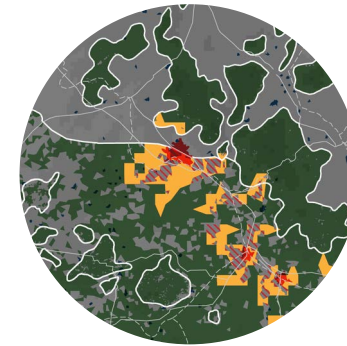
<u>2015:</u>	<u>2030:</u>
993,000	1,211,000



**9. CULIACAN, MEXICO**

POPULATION PROJECTIONS:

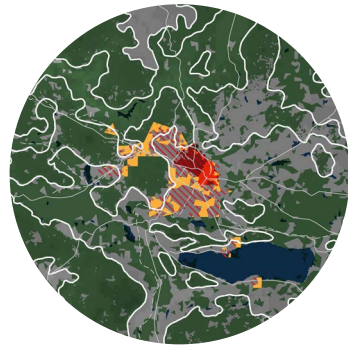
<u>2015:</u>	<u>2030:</u>
762,000	969,000



**13. LEON DE LOS ALDAMA, MEXICO**

POPULATION PROJECTIONS:

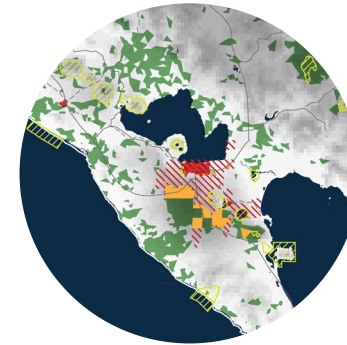
<u>2015:</u>	<u>2030:</u>
1,807,000	2,260,000



**10. GUADALAJARA, MEXICO**

POPULATION PROJECTIONS:

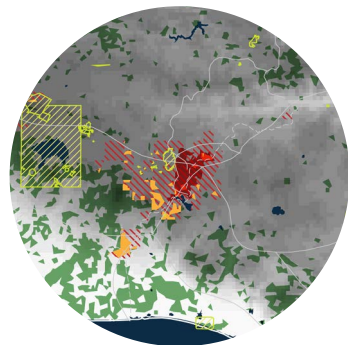
<u>2015:</u>	<u>2030:</u>
4,843,000	5,837,000



**14. MANAGUA, NICARAGUA**

POPULATION PROJECTIONS:

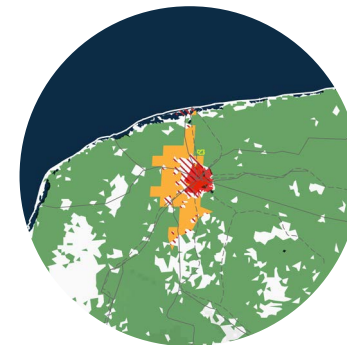
<u>2015:</u>	<u>2030:</u>
956,000	1,232,000



**11. GUATEMALA CITY, GUATEMALA**

POPULATION PROJECTIONS:

<u>2015:</u>	<u>2030:</u>
2,918,000	4,650,000

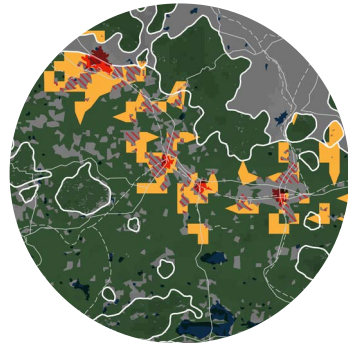


**15. MERIDA, MEXICO**

POPULATION PROJECTIONS:

<u>2015:</u>	<u>2030:</u>
324,000	403,000

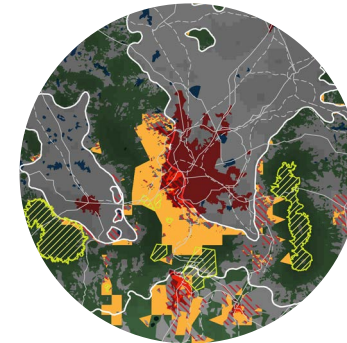
-  Topography
-  Water Body
-  Remnant Vegetation
-  Protected Area
-  Threatened Species Habitat
-  Existing Urban Area
-  Urban Growth Projection
-  Conflict Zone
-  Extreme Conflict Zone



**12. IRAPUATO, MEXICO**

POPULATION PROJECTIONS:

<u>2015:</u>	<u>2030:</u>
427,000	547,000



**16. MEXICO CITY, MEXICO**

POPULATION PROJECTIONS:

<u>2015:</u>	<u>2030:</u>
20,999,000	23,865,000

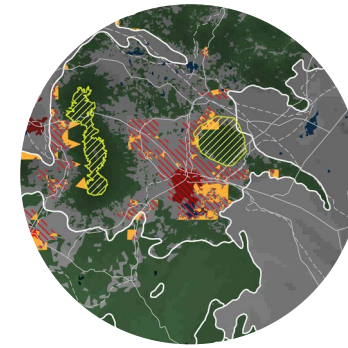




### 17. MINATITLAN, MEXICO

POPULATION PROJECTIONS:

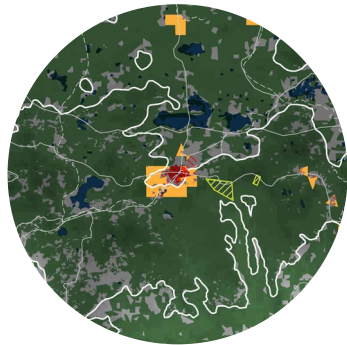
<u>2015:</u>	<u>2030:</u>
373,000	453,000



### 21. PUEBLA, MEXICO

POPULATION PROJECTIONS:

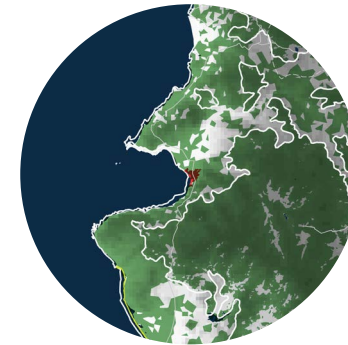
<u>2015:</u>	<u>2030:</u>
2,984,000	3,628,000



### 18. MORELIA, MEXICO

POPULATION PROJECTIONS:

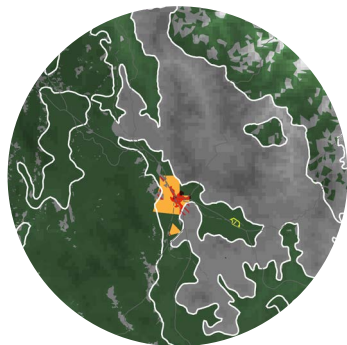
<u>2015:</u>	<u>2030:</u>
914,000	1,140,000



### 22. PUERTO VALLARTA, MEXICO

POPULATION PROJECTIONS:

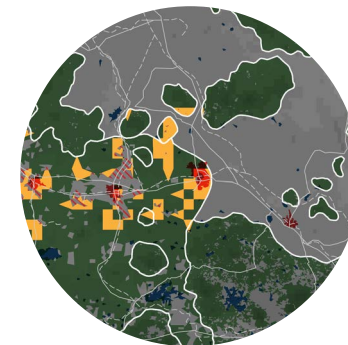
<u>2015:</u>	<u>2030:</u>
471,000	651,000



### 19. OAXACA DE JUAREZ, MEXICO

POPULATION PROJECTIONS:

<u>2015:</u>	<u>2030:</u>
668,000	834,000

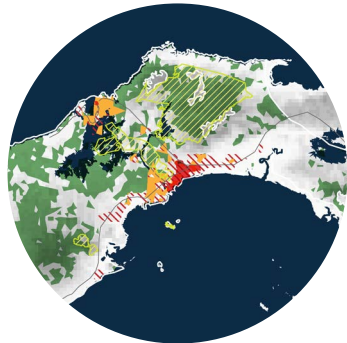


### 23. QUERETARO, MEXICO

POPULATION PROJECTIONS:

<u>2015:</u>	<u>2030:</u>
1,267,000	1,630,000

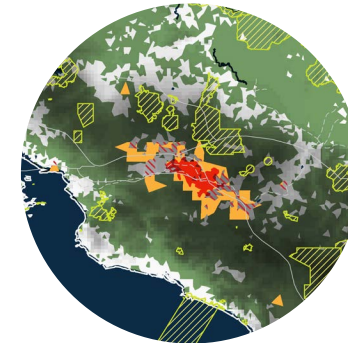
-  Topography
-  Water Body
-  Remnant Vegetation
-  Protected Area
-  Threatened Species Habitat
-  Existing Urban Area
-  Urban Growth Projection
-  Conflict Zone
-  Extreme Conflict Zone



### 20. PANAMA CITY, PANAMA

POPULATION PROJECTIONS:

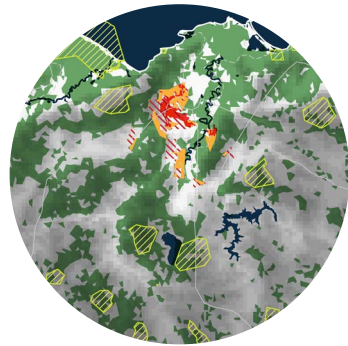
<u>2015:</u>	<u>2030:</u>
1,673,000	2,221,000



### 24. SAN JOSE, COSTA RICA

POPULATION PROJECTIONS:

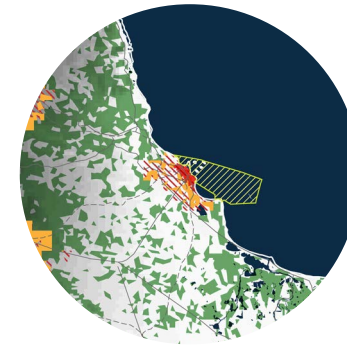
<u>2015:</u>	<u>2030:</u>
1,170,000	1,501,000



**25. SAN PEDRO SULA, HONDURAS**

POPULATION PROJECTIONS:

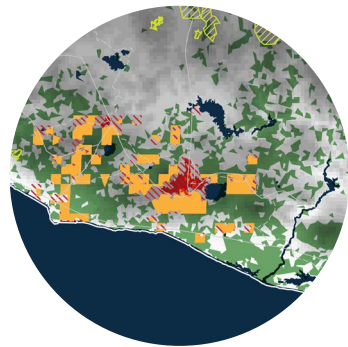
<u>2015:</u>	<u>2030:</u>
852,000	1,305,000



**29. VERACRUZ, MEXICO**

POPULATION PROJECTIONS:

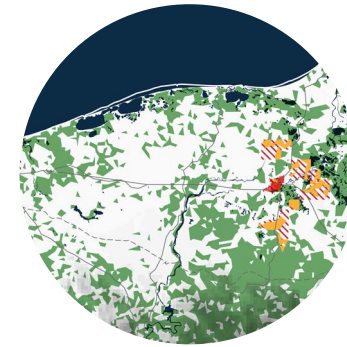
<u>2015:</u>	<u>2030:</u>
880,000	1,083,000



**26. SAN SALVADOR, EL SALVADOR**

POPULATION PROJECTIONS:

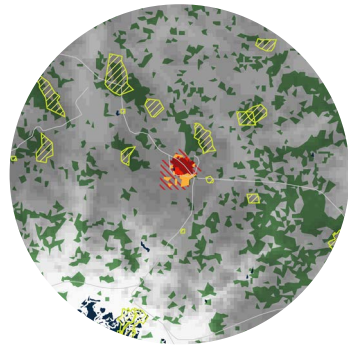
<u>2015:</u>	<u>2030:</u>
1,098,000	1,254,000



**30. VILLAHERMOSA, MEXICO**

POPULATION PROJECTIONS:

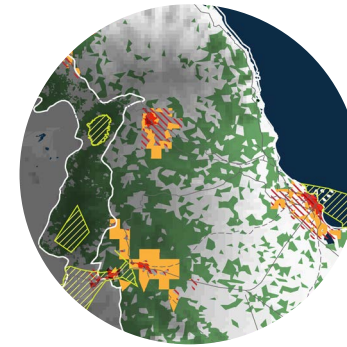
<u>2015:</u>	<u>2030:</u>
845,000	1,066,000



**27. TEGUCIGALPA, HONDURAS**

POPULATION PROJECTIONS:

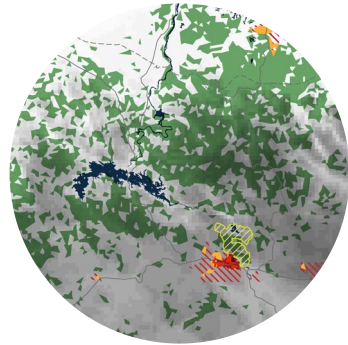
<u>2015:</u>	<u>2030:</u>
1,123,000	1,613,000



**31. XALAPA, MEXICO**

POPULATION PROJECTIONS:

<u>2015:</u>	<u>2030:</u>
729,000	906,000



**28. TUXTLA GUTIERREZ, MEXICO**

POPULATION PROJECTIONS:

<u>2015:</u>	<u>2030:</u>
780,000	1,000,000

-  Topography
-  Water Body
-  Remnant Vegetation
-  Protected Area
-  Threatened Species Habitat
-  Existing Urban Area
-  Urban Growth Projection
-  Conflict Zone
-  Extreme Conflict Zone