

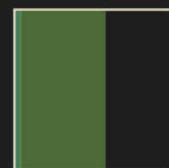
MAPUTALAND - PONDOLAND - ALBANY

360,369 km²



BIODIVERSITY TARGET

2020 TARGET: 17% protected



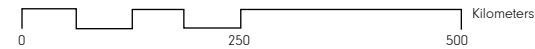
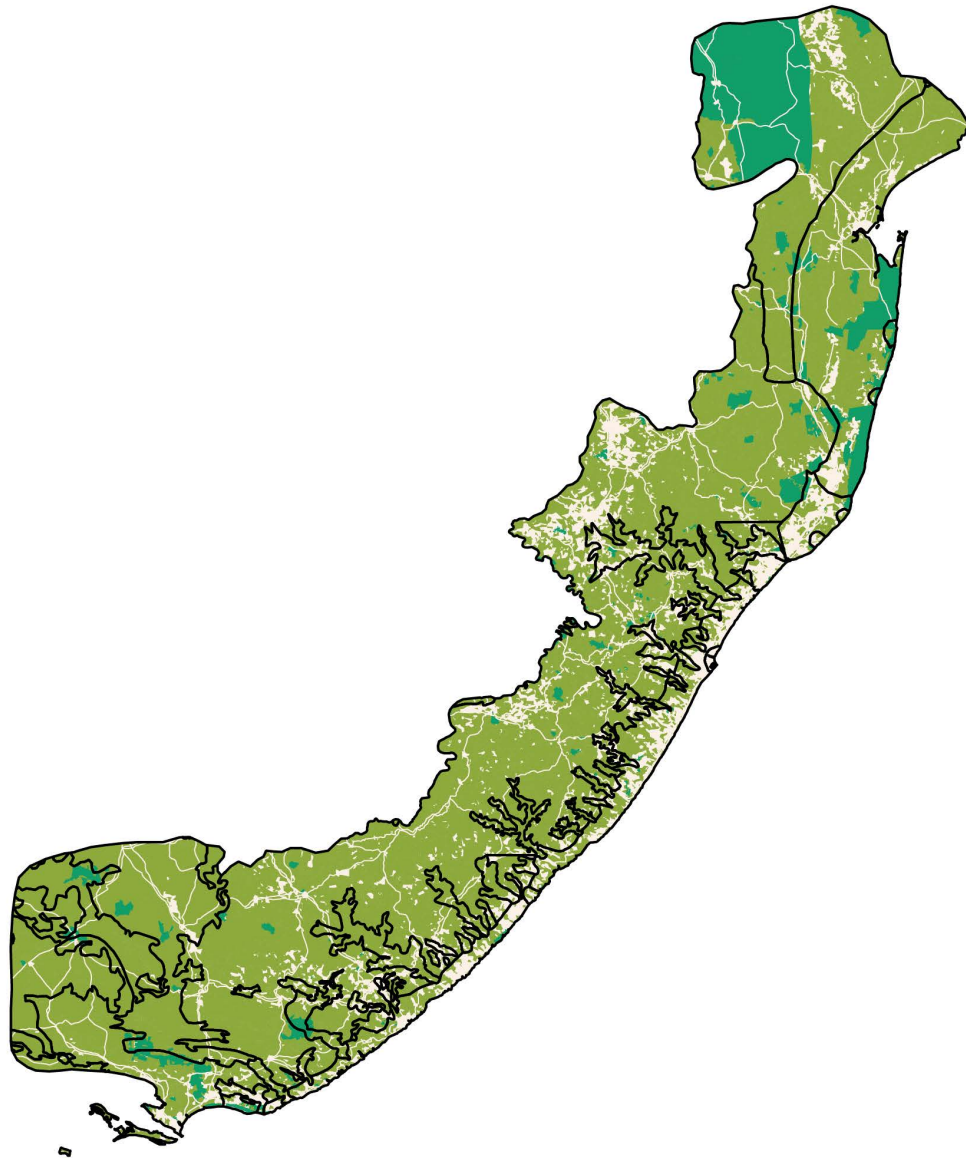
2015: 9.7% PROTECTED

.6% I-IV
 .1% V-VI
 9% NA

- Maputaland-Pondoland-Albany Hotspot
- Neighboring Hotspot
- Protected Area (IUCN Category I-IV)
- Protected Area (IUCN Category V-VI)
- Protected Area (IUCN Category NA)
- Urban Area
- Agriculture (0-100% landuse)
- Roads
- Railroads

MAPUTALAND-PONDOLAND-ALBANY ECOREGIONS

Shortfall Assessment to reach Target of 17% protected land in each terrestrial ecoregion



Mexico, United States of America

3 BIOMES

Montane Grasslands & Shrublands

Tropical & Subtropical Grasslands, Savannas & Shrublands

Tropical & Subtropical Moist Broadleaf Forests

10 ECOREGIONS

ENDEMIC PLANT SPECIES

1,900

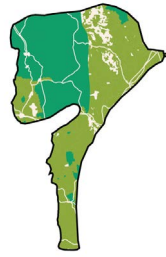
ENDEMIC ANIMAL SPECIES

65

1. Zambebian & Mopane Woodlands

26,320 km² remnant habitat

Target reached



5. Albany Thickets

13,526 km² remnant habitat

To reach Aichi Target of 17%

+543 km² protected areas



7. Southern African Mangroves

439 km² remnant habitat

Target reached



2. Nama Karoo

31,866 km² remnant habitat

To reach Aichi Target of 17%

+3,943 km² protected areas

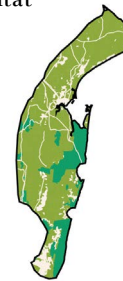


6. Maputaland Coastal Forest Mosaic

26,443 km² remnant habitat

To reach Aichi Target of 17%

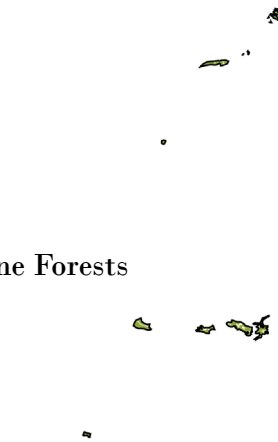
+430 km² protected areas



8. Drakensberg Alti-Montane Grasslands & Woodlands

285 km² remnant habitat

Target reached

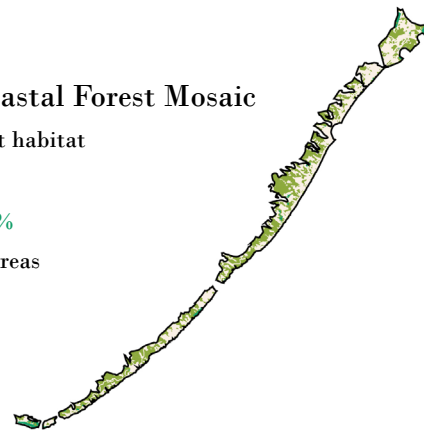


3. Kwa-Sulu-Cape Coastal Forest Mosaic

12,500 km² remnant habitat

To reach Aichi Target of 17%

+2,972 km² protected areas



9. Knysna-Amatole Montane Forests

1,188 km² remnant habitat

To reach Aichi Target of 17%

+230 km² protected areas

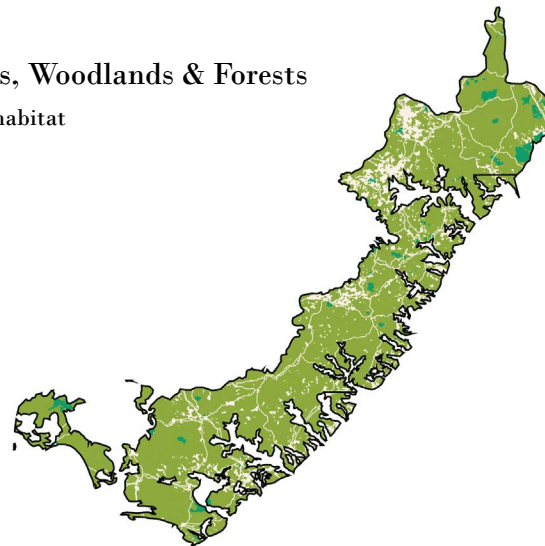


4. Drakensberg Montane Grasslands, Woodlands & Forests

143,087 km² remnant habitat

To reach Aichi Target of 17%

+21,439 km² protected areas

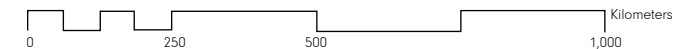
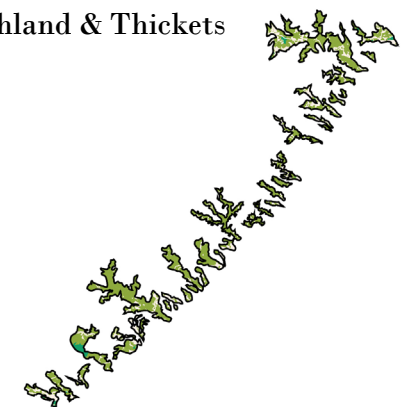


10. Maputaland-Pondoland Bushland & Thickets

20,565 km² remnant habitat

To reach Aichi Target of 17%

+3,655 km² protected areas



MAPUTALAND-PONDOLAND-ALBANY | CONFLICTS

Conflicts between 2030 projected urban growth areas and threatened species habitats



6,081,000 Population

2015 URBAN POPULATION

7,617,000

2030 URBAN POPULATION

24

THREATENED MAMMAL SPECIES

MAJOR CROPS

sunflowers, maize, mixed grasses, legumes

BIODIVERSITY THREATS

Logging

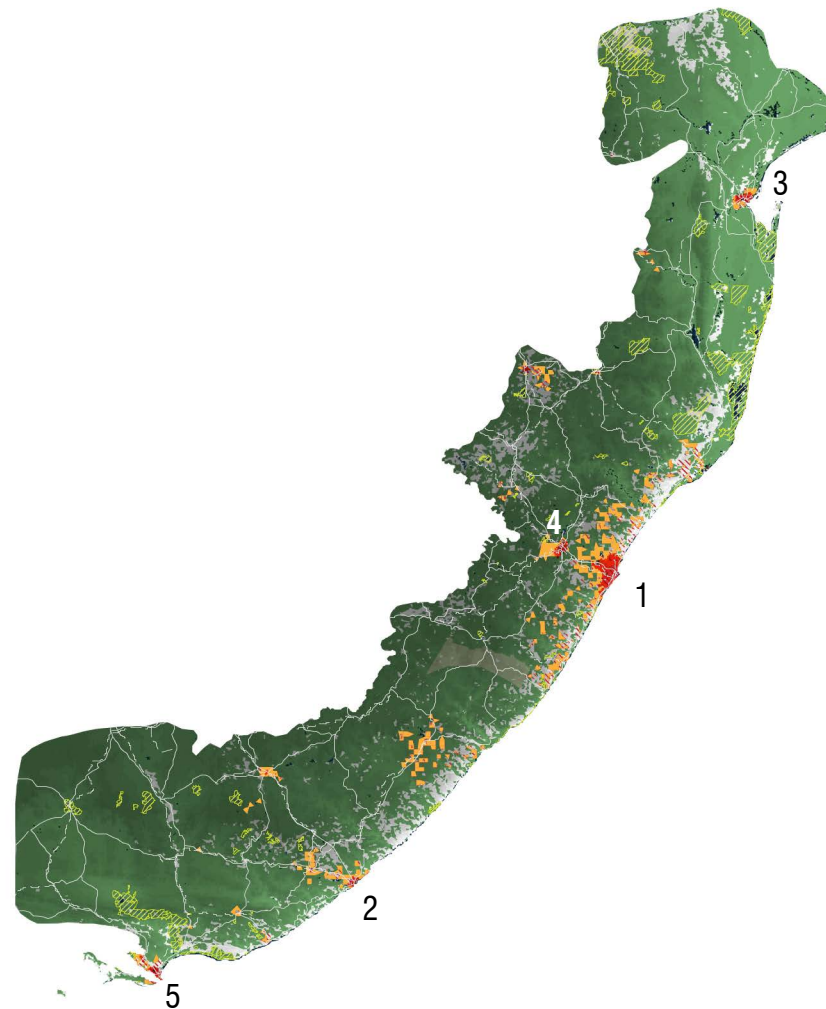
Agricultural Expansion

Urban Development

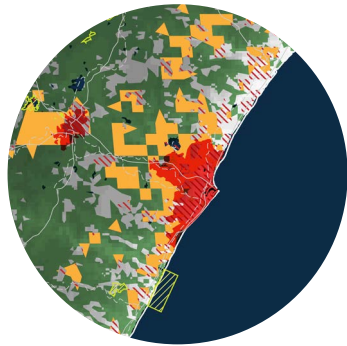
Mining

Climate Change

- Topography
- Water Body
- Remnant Vegetation
- Protected Area
- Threatened Species Habitat
- Existing Urban Area
- Urban Growth Projection
- Conflict Zone
- Extreme Conflict Zone



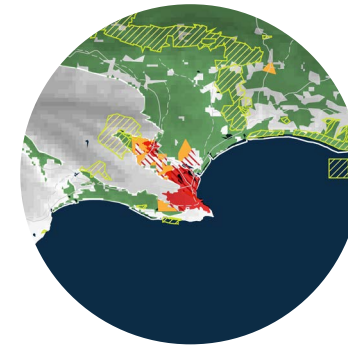
0 100 250 500km



1. DURBAN, SOUTH AFRICA

POPULATION PROJECTIONS:

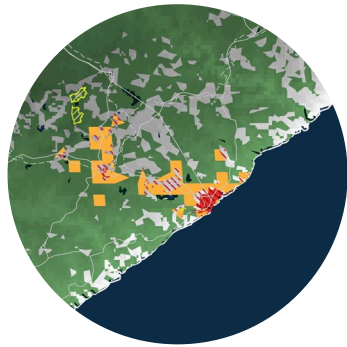
<u>2015:</u>	<u>2030:</u>
2,901,000	3,349,000



5. PORT ELIZABETH, SOUTH AFRICA

POPULATION PROJECTIONS:

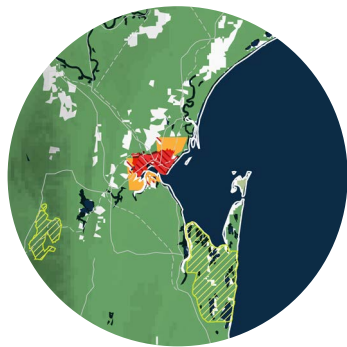
<u>2015:</u>	<u>2030:</u>
1,179,000	1,390,000



2. EAST LONDON, SOUTH AFRICA

POPULATION PROJECTIONS:

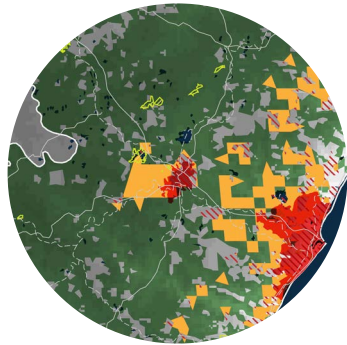
<u>2015:</u>	<u>2030:</u>
319,000	397,000



3. MAPUTO, MOZAMBIQUE

POPULATION PROJECTIONS:

<u>2015:</u>	<u>2030:</u>
1,187,000	1,893,000



4. PIETERMARITZBURG, SOUTH AFRICA

POPULATION PROJECTIONS:

<u>2015:</u>	<u>2030:</u>
2,901,000	3,349,000

-  Topography
-  Water Body
-  Remnant Vegetation
-  Protected Area
-  Threatened Species Habitat
-  Existing Urban Area
-  Urban Growth Projection
-  Conflict Zone
-  Extreme Conflict Zone