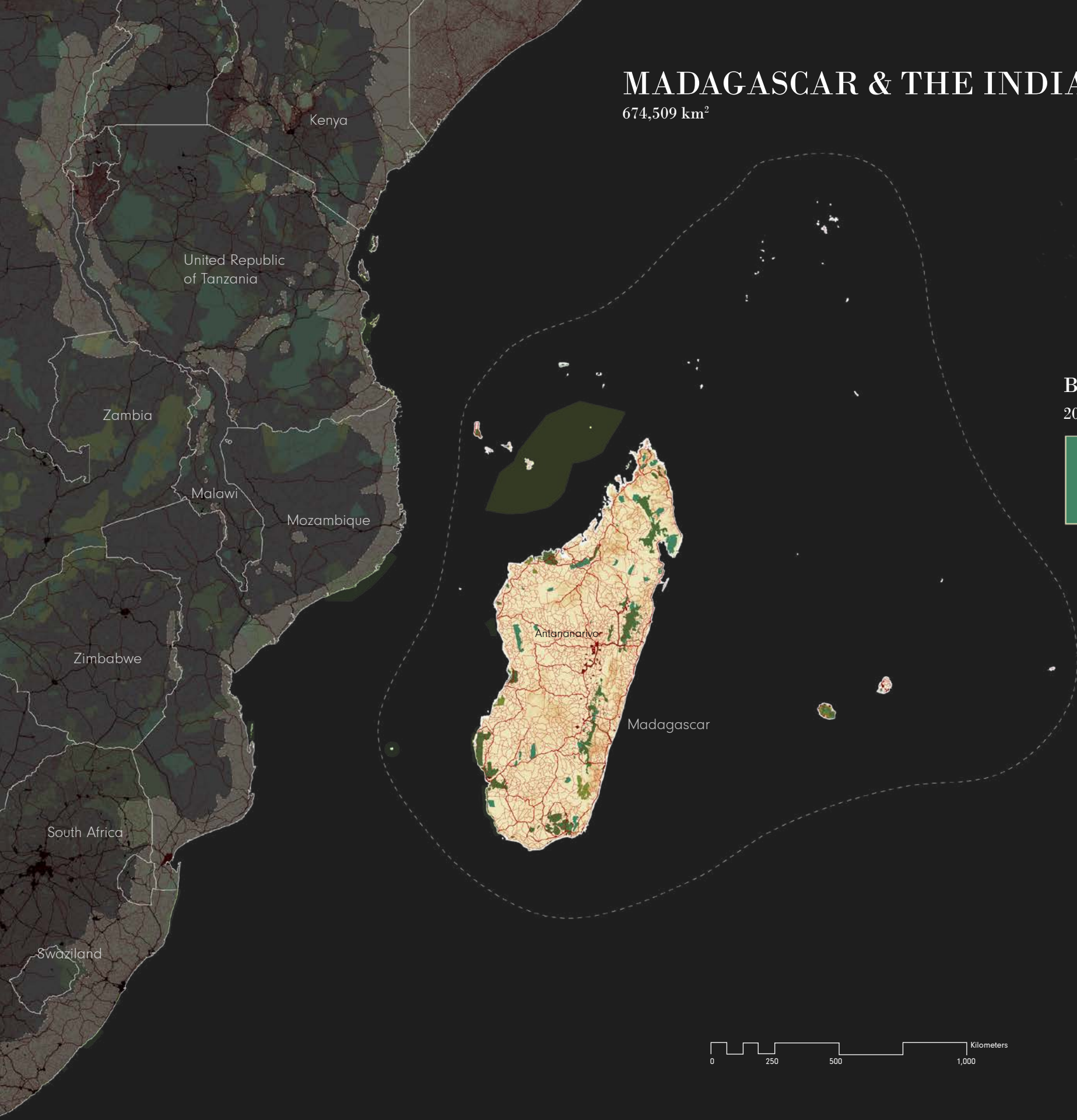


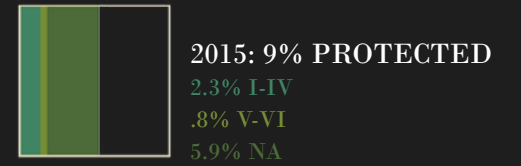
# MADAGASCAR & THE INDIAN OCEAN ISLANDS

674,509 km<sup>2</sup>

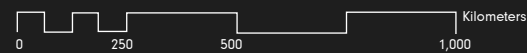


## BIODIVERSITY TARGET

2020 TARGET: 17% protected

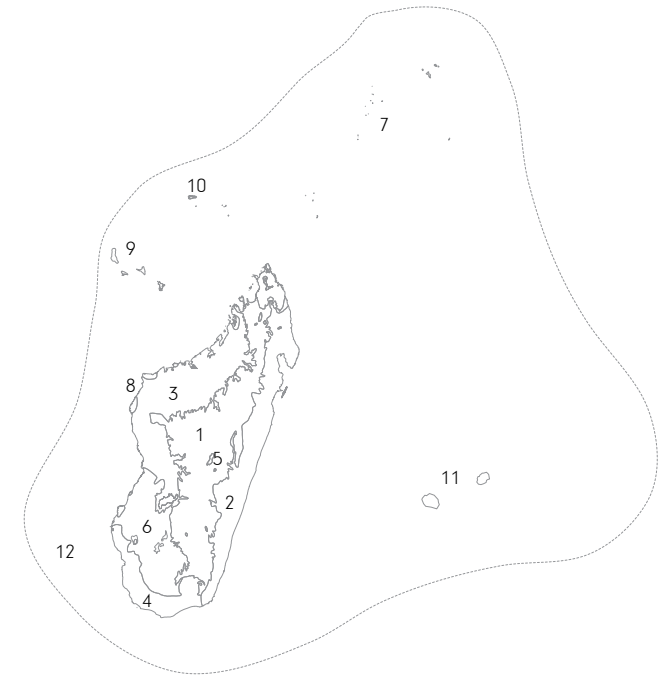
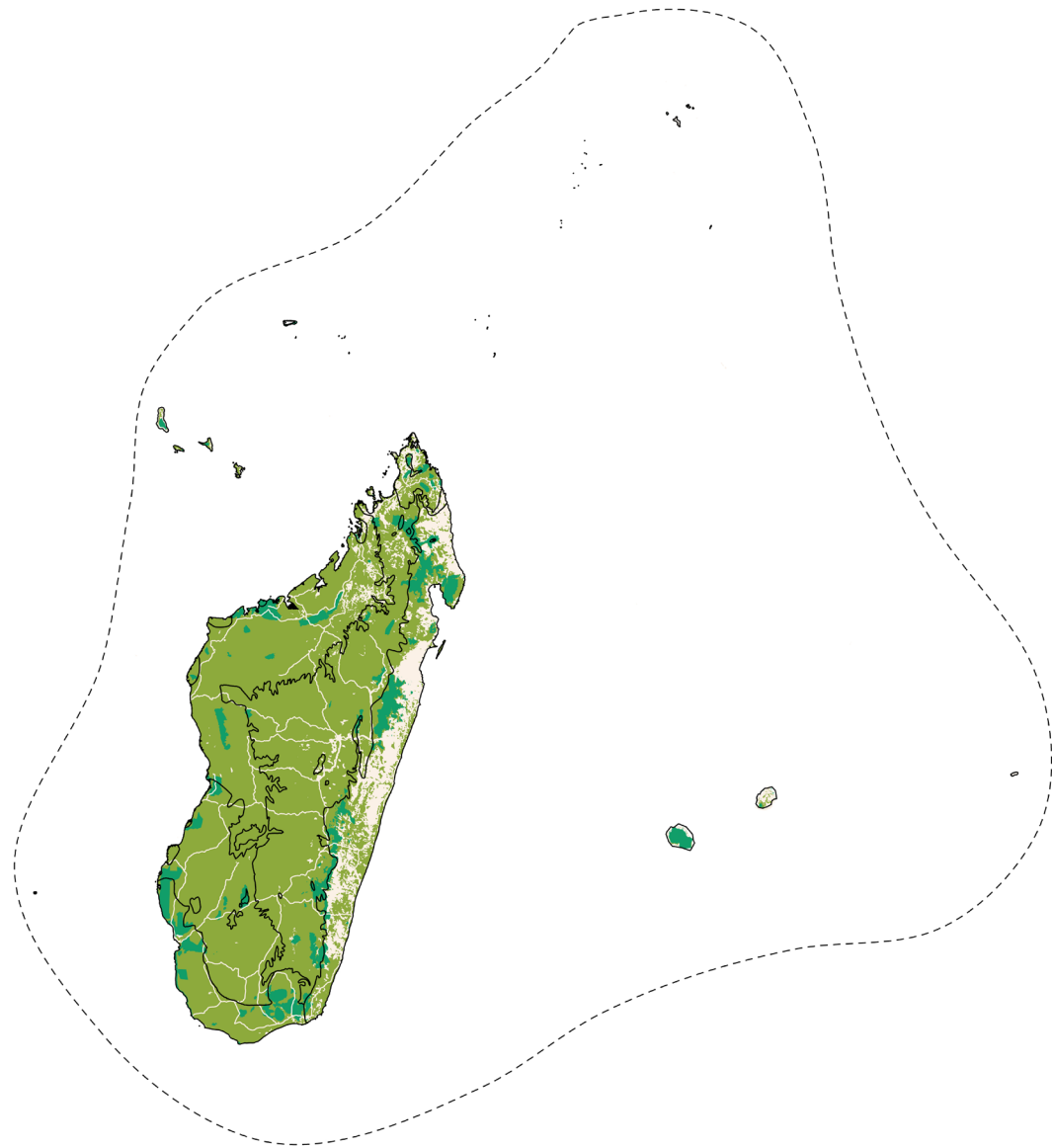


- Madagascar & the Indian Ocean Islands Hotspot
- Neighboring Hotspot
- Protected Area (IUCN Category I-IV)
- Protected Area (IUCN Category V-VI)
- Protected Area (IUCN Category NA)
- Urban Area
- Agriculture (0-100% landuse)
- Roads
- Railroads



# MADAGASCAR & THE INDIAN OCEAN ISLANDS ECOREGIONS

Shortfall Assessment to reach Target of 17% protected land in each terrestrial ecoregion



Comoros, France, French Southern & Antarctic Islands (France), Madagascar, Mauritius, Seychelles

## 4 BIOMES

Deserts & Xeric Shrublands

Dry Broadleaf Forests

Mangroves

Moist Broadleaf Forests

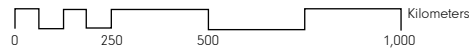
## 12 ECOREGIONS

### ENDEMIC PLANT SPECIES

11,600

### ENDEMIC ANIMAL SPECIES

1,018



### 1. Madagascar Subhumid Forests

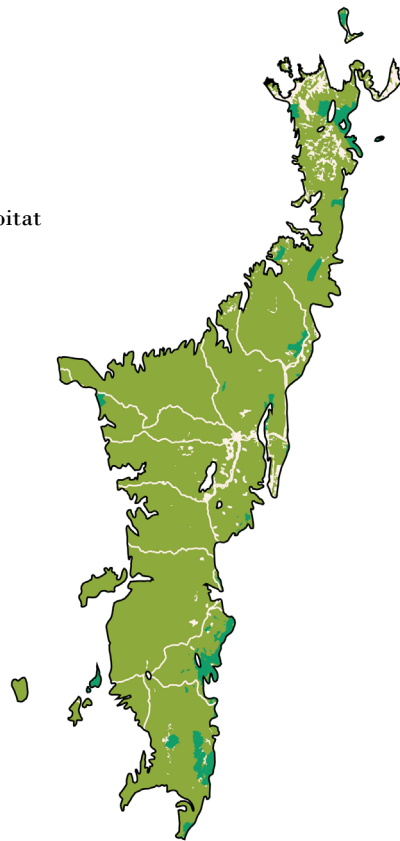


203,557 km<sup>2</sup> remnant habitat

To reach Aichi Target of 17%



+27,609 km<sup>2</sup> protected areas



### 2. Madagascar Lowland Forests

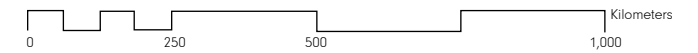
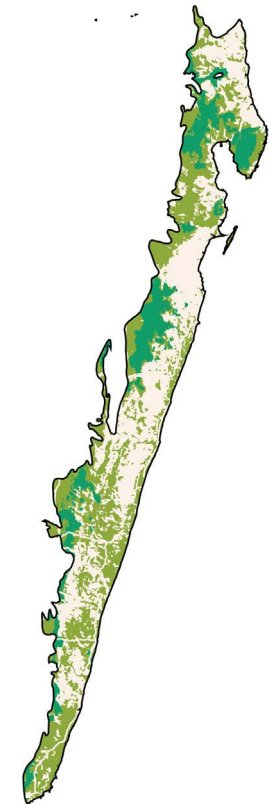


52,417 km<sup>2</sup> remnant habitat

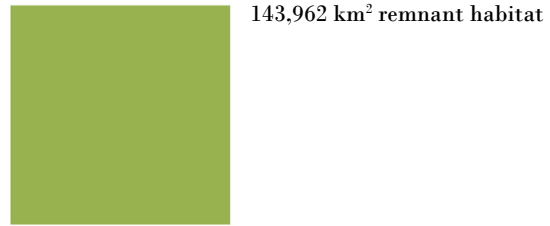
To reach Aichi Target of 17%



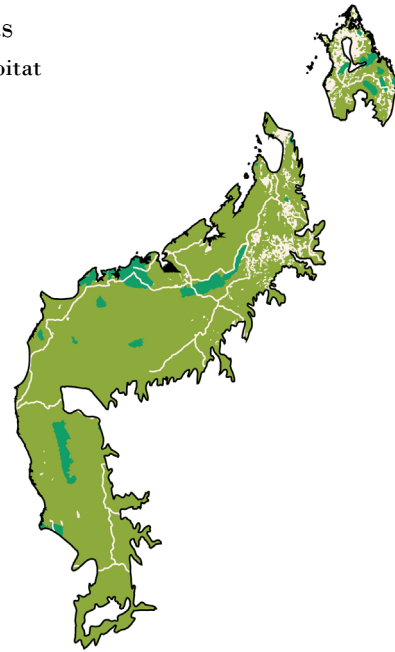
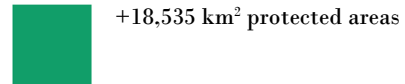
+2,369 km<sup>2</sup> protected areas



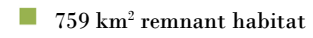
### 3. Madagascar Dry Deciduous Forests



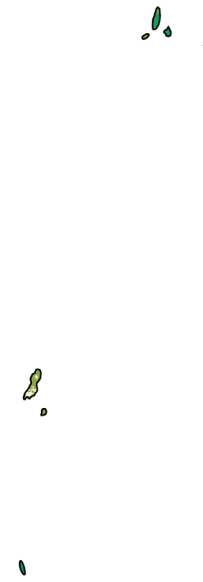
To reach Aichi Target of 17%



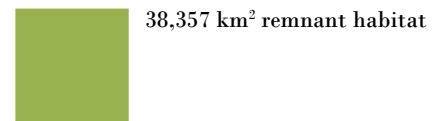
### 5. Madagascar Ericoid Thickets



Target reached



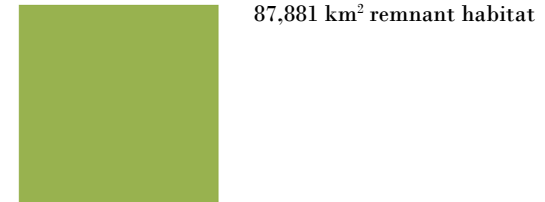
### 4. Madagascar Spiny Thickets



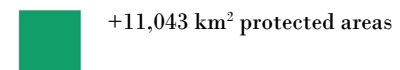
Target reached



### 6. Madagascar Succulent Woodlands



To reach Aichi Target of 17%



### 7. Granitic Seychelles Forests

To reach Aichi Target of 17%

- +46 km<sup>2</sup> protected areas



### 9. Comoros Forests

761 km<sup>2</sup> remnant habitat

Target Reached



### 10. Aldabra Island Xeric Scrub

Target Reached



### 11. Mascarene Forests

474 km<sup>2</sup> remnant habitat

Target Reached



### 8. Madagascar Mangroves

4,435 km<sup>2</sup> remnant habitat

To reach Aichi Target of 17%

- +428 km<sup>2</sup> protected areas

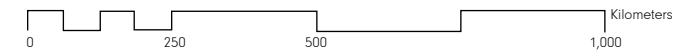


### 12.

1 km<sup>2</sup> remnant habitat

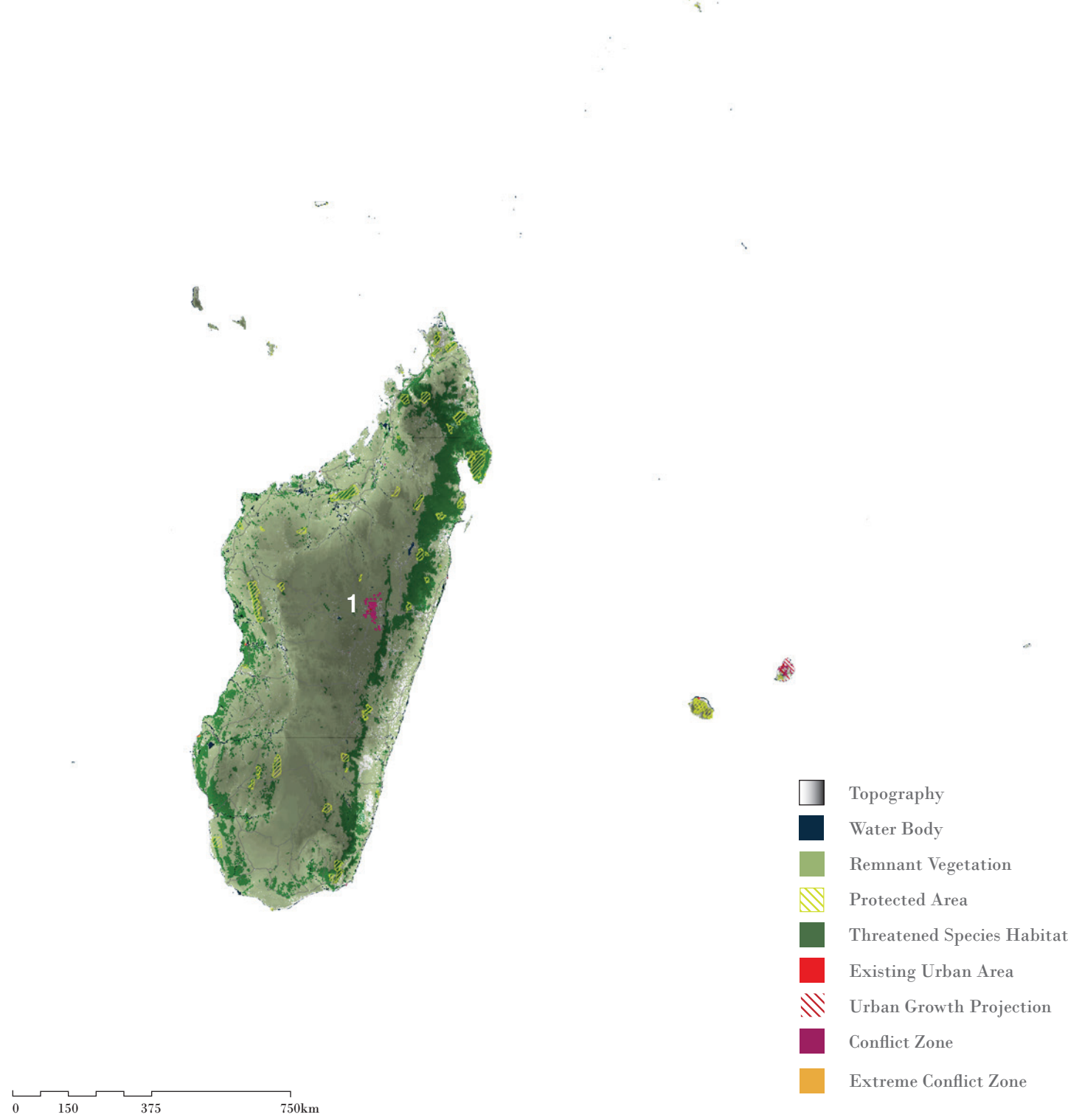
To reach Aichi Target of 17%

- +4 km<sup>2</sup> protected areas



# MADAGASCAR & THE INDIAN OCEAN ISLANDS | CONFLICTS

Conflicts between 2030 projected urban growth areas and threatened species habitats



2,610,000 Population

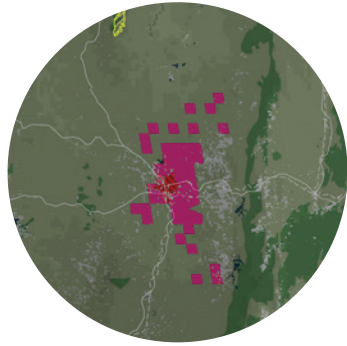
2015 URBAN POPULATION

5,073,000  
2030 URBAN POPULATION

178  
THREATENED SPECIES

MAJOR CROPS  
rice, cassava, sugar cane, vegetables

BIODIVERSITY THREATS  
Agricultural Expansion  
Uncontrolled Livestock Grazing  
Fuelwood Collection/Charcoal Production  
Corporate and Small-Scale Mining  
Policy-Making Practices  
Climate Change  
Industrial Development



## 1. ANTANANARIVO, MADAGASCAR

### POPULATION PROJECTIONS:

<u>2015:</u>	<u>2030:</u>
2,610,000	5,073,000

-  Topography
-  Water Body
-  Remnant Vegetation
-  Protected Area
-  Threatened Species Habitat
-  Existing Urban Area
-  Urban Growth Projection
-  Conflict Zone
-  Extreme Conflict Zone