

# INDO-BURMA

2,655,063 km<sup>2</sup>

## BIODIVERSITY TARGET

2020 TARGET: 17% protected



2015: 13.4% PROTECTED

8.2% I-IV  
2.5% V-VI  
2.7% NA

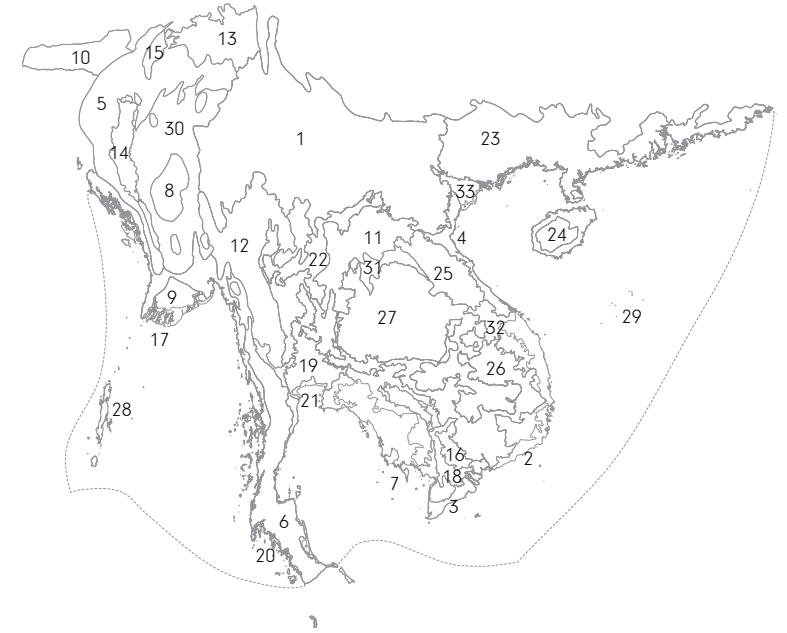
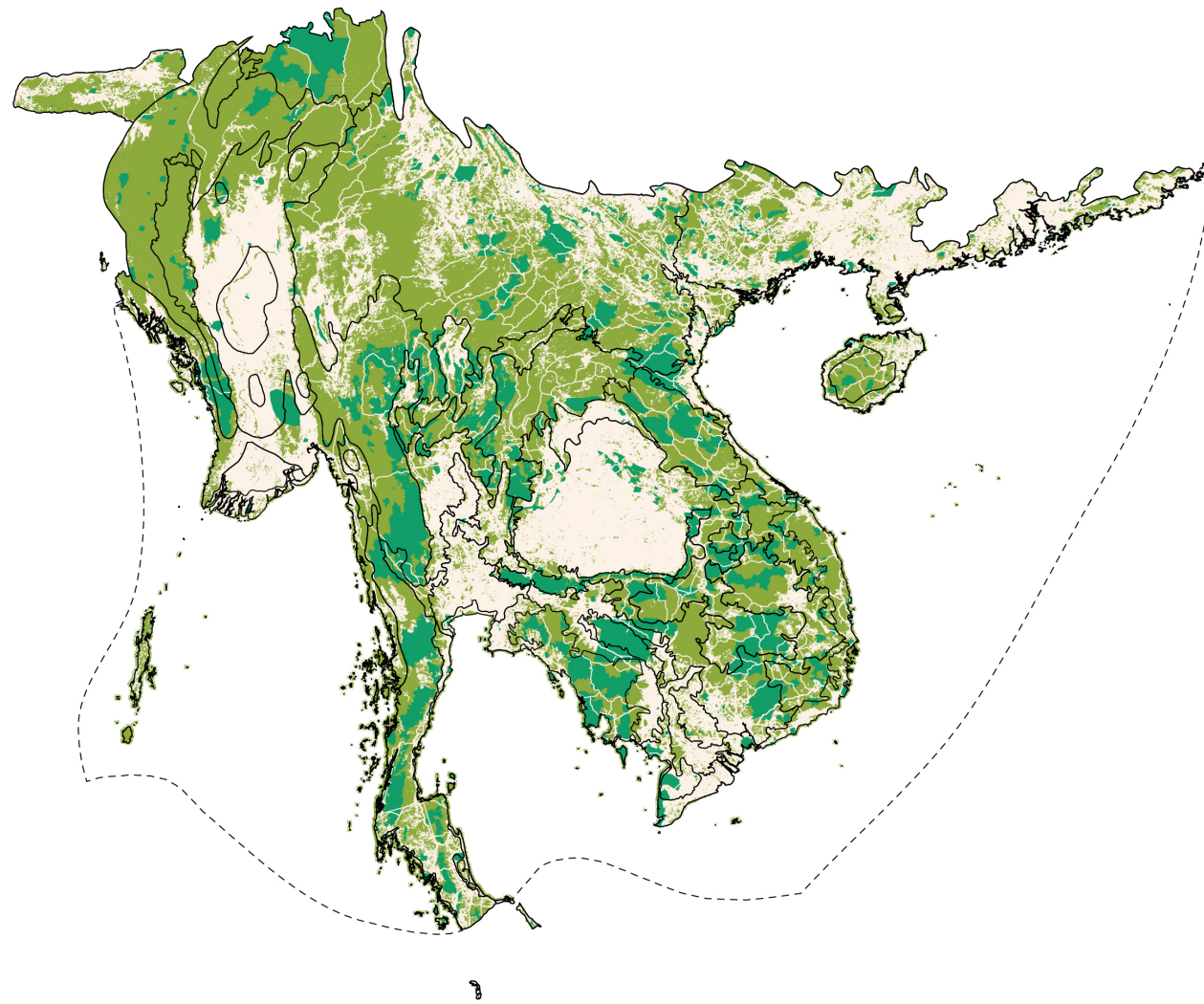
- Indo-Burma Hotspot
- Neighboring Hotspot
- Protected Area (IUCN Category I-IV)
- Protected Area (IUCN Category V-VI)
- Protected Area (IUCN Category NA)
- Urban Area
- Agriculture (0-100% landuse)
- Roads
- Railroads





# INDO-BURMA ECOREGIONS

Shortfall Assessment to reach Target of 17% protected land in each terrestrial ecoregion



Bangladesh, China, India, Laos, Malaysia, Myanmar, Thailand, Vietnam

## 4 BIOMES

Mangroves

Tropical & Subtropical Coniferous Forests

Tropical & Subtropical Dry Broadleaf Forests

Tropical & Subtropical Moist Broadleaf Forests

## 33 ECOREGIONS

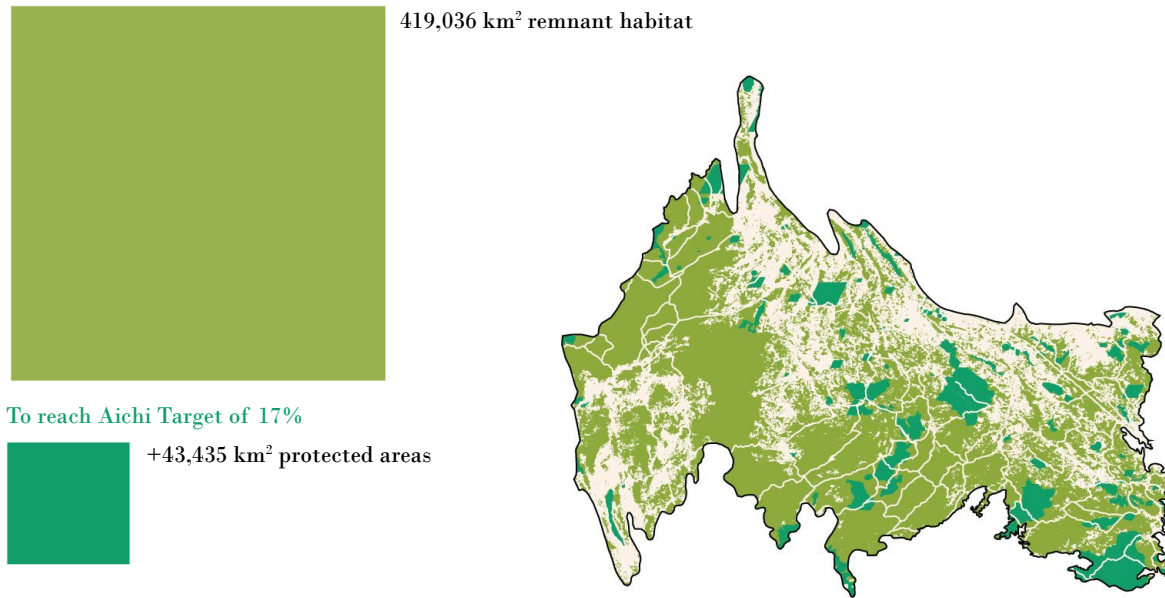
## ENDEMIC PLANT SPECIES

7,000

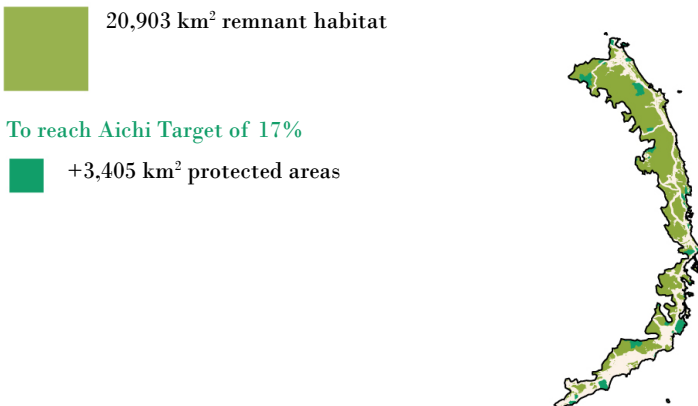
## ENDEMIC ANIMAL SPECIES

1,048

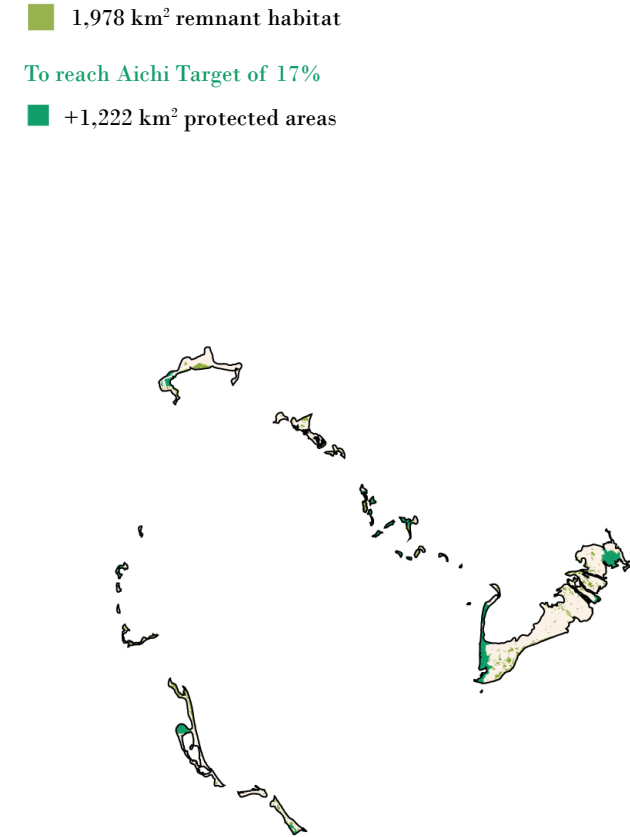
### 1. Northern Indochina Subtropical Forests



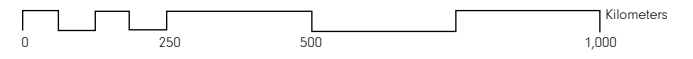
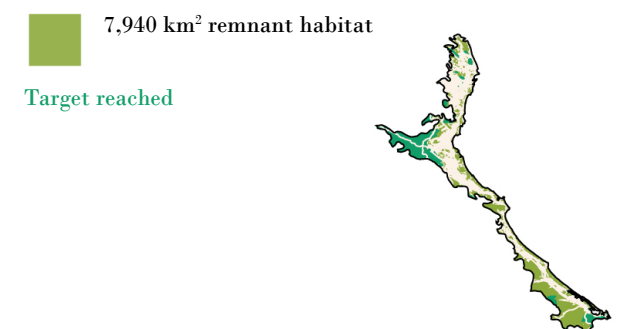
### 2. Southern Vietnam Lowland Dry Forests



### 3. Indochina Mangroves



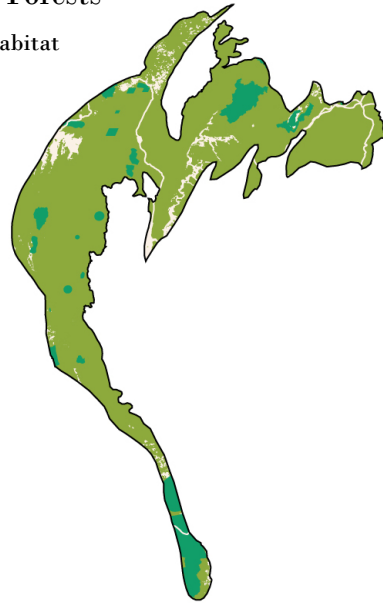
### 4. Northern Vietnam Lowland Rain Forests



### 5. Mizoram-Manipur-Kachin Rain Forests



139,083 km<sup>2</sup> remnant habitat



To reach Aichi Target of 17%

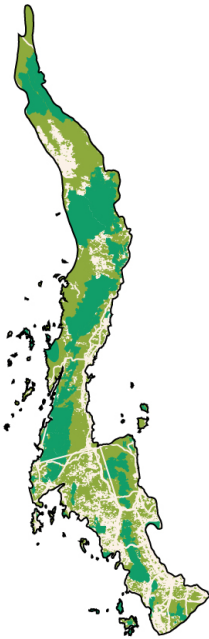


+14,306 km<sup>2</sup> protected areas

### 6. Tenasserim-South Thailand Semi-Evergreen Rain Forests



48,875 km<sup>2</sup> remnant habitat



Target reached

### 7. Cardamom Mountains Rain Forests



19,526 km<sup>2</sup> remnant habitat



Target reached

### 8. Irrawaddy Dry Forests

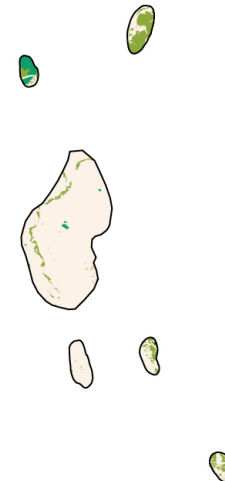


2,592 km<sup>2</sup> remnant habitat

To reach Aichi Target of 17%



+5,745 km<sup>2</sup> protected areas



### 9. Irrawaddy Freshwater Swamp Forests



3,639 km<sup>2</sup> remnant habitat

To reach Aichi Target of 17%

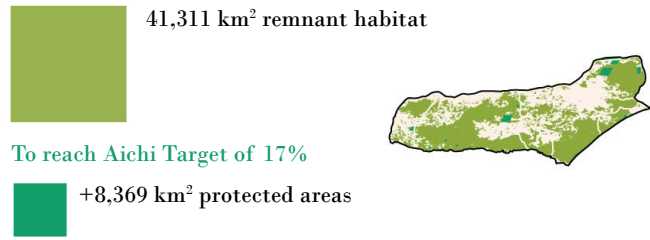


+2,790 km<sup>2</sup> protected areas

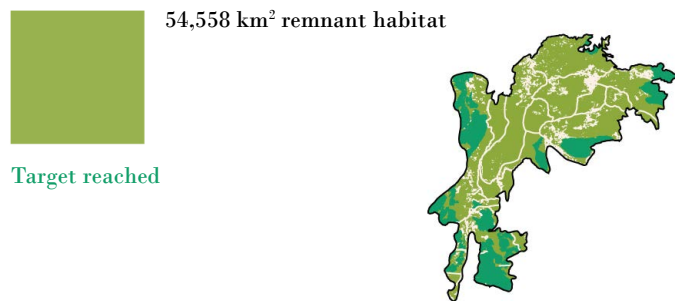




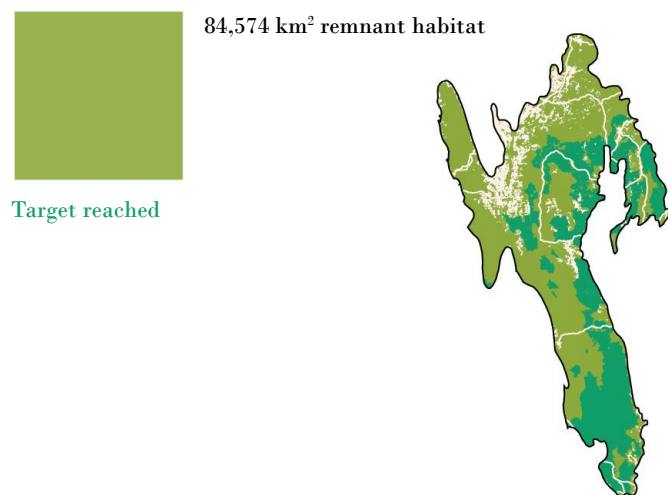
### 10. Meghalaya Subtropical Forests



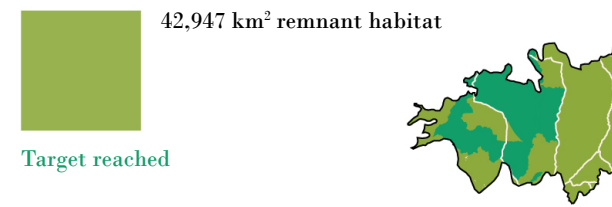
### 11. Luang Prabang Montane Rain Forests



### 12. Kayah-Karen Montane Rain Forests



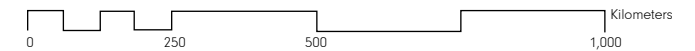
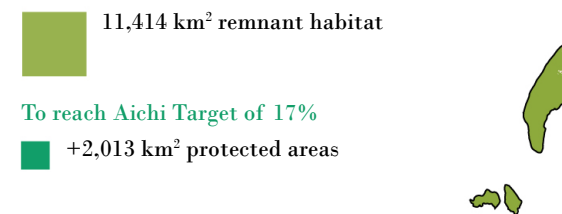
### 13. Northern Triangle Subtropical Forests



### 14. Chin Hills-Arakan Yoma Montane Forests



### 15. Northeast India-Myanmar Pine Forests

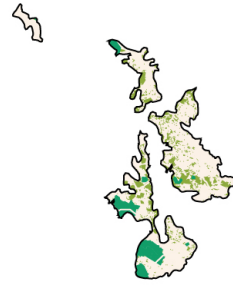


### 16. Tonle Sap Mekong Peat Swamp Forests

■ 1,620 km<sup>2</sup> remnant habitat

To reach Aichi Target of 17%

■ +2,049 km<sup>2</sup> protected areas



### 18. Tonle Sap Freshwater Swamp Forests

■ 3,818 km<sup>2</sup> remnant habitat

To reach Aichi Target of 17%

■ +1,253 km<sup>2</sup> protected areas



### 17. Myanmar Coast Mangroves

■ 9,763 km<sup>2</sup> remnant habitat

To reach Aichi Target of 17%

■ +2,308 km<sup>2</sup> protected areas

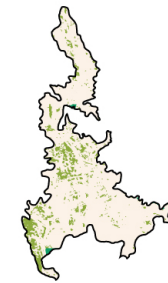


### 19. Chao Phraya Freshwater Swamp Forests

■ 4,311 km<sup>2</sup> remnant habitat

To reach Aichi Target of 17%

■ +7,020 km<sup>2</sup> protected areas

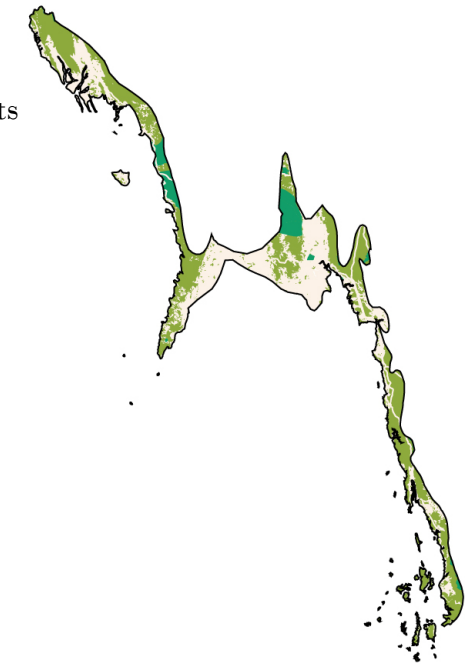


### 20. Myanmar Coastal Rain Forests

■ 44,386 km<sup>2</sup> remnant habitat

To reach Aichi Target of 17%

■ +6,959 km<sup>2</sup> protected areas



### 21. Chao Phraya Lowland Moist Deciduous Forests

6,724 km<sup>2</sup> remnant habitat

To reach Aichi Target of 17%

+590 km<sup>2</sup> protected areas



### 24. Hainan Island Monsoon Rain Forests

14,975 km<sup>2</sup> remnant habitat

To reach Aichi Target of 17%

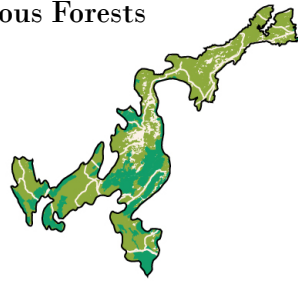
+1,425 km<sup>2</sup> protected areas



### 22. Northern Thailand-Laos Moist Deciduous Forests

28,242 km<sup>2</sup> remnant habitat

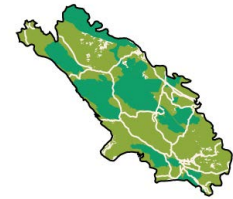
Target reached



### 25. Northern Annamites Rain Forests

30,731 km<sup>2</sup> remnant habitat

Target reached

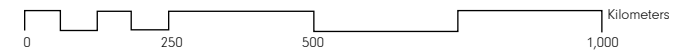
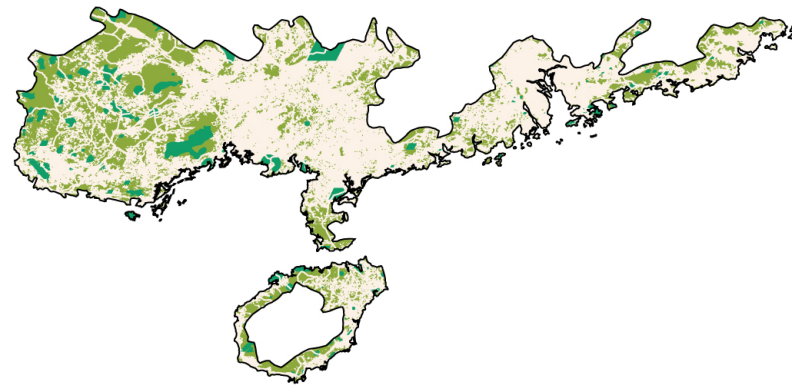


### 23. South China-Vietnam Subtropical Evergreen Forests

176,180 km<sup>2</sup> remnant habitat

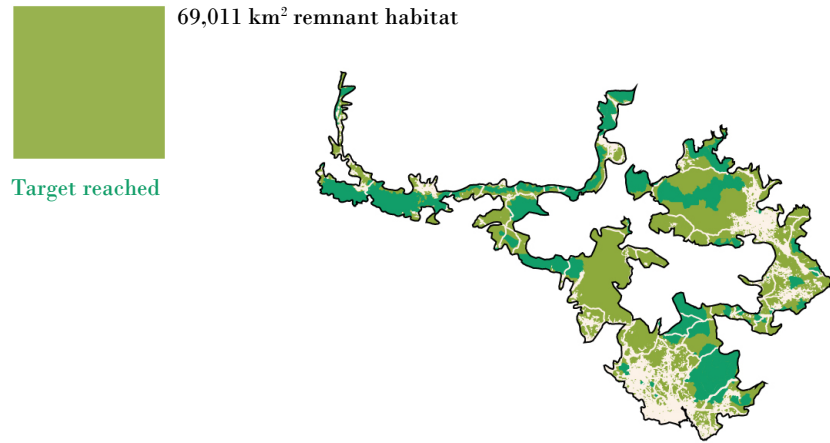
To reach Aichi Target of 17%

+31,861 km<sup>2</sup> protected areas

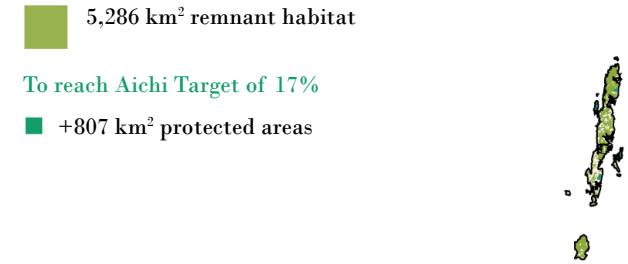




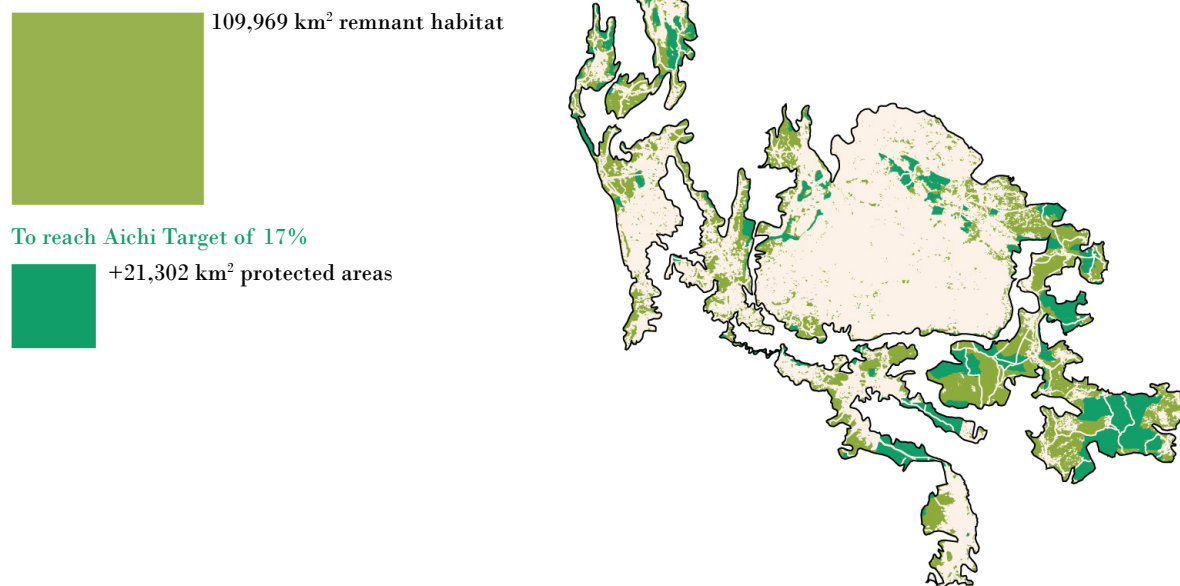
### 26. Southeastern Indochina Dry Evergreen Forests



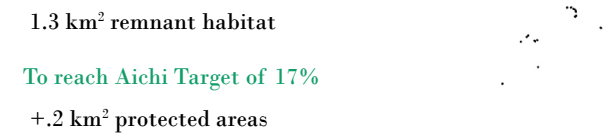
### 28. Andaman Islands Rain Forests



### 27. Central Indochina Dry Forests



### 29. South China Sea Islands



### 30. Irrawaddy Moist Deciduous Forests

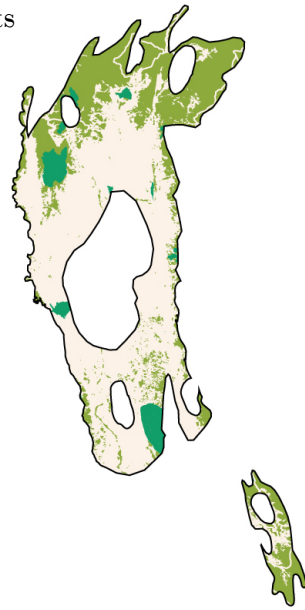


78,671 km<sup>2</sup> remnant habitat

To reach Aichi Target of 17%



+20,053 km<sup>2</sup> protected areas

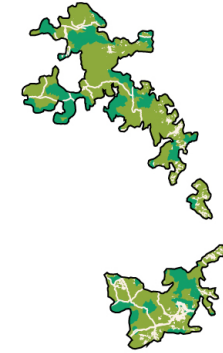


### 32. Southern Annamites Montane Rain Forests



35,607 km<sup>2</sup> remnant habitat

Target reached



### 31. Northern Khorat Plateau Moist Deciduous Forests



5,065 km<sup>2</sup> remnant habitat

To reach Aichi Target of 17%



+2,179 km<sup>2</sup> protected areas



### 33. Red River Freshwater Swamp Forests

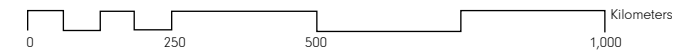


3,960 km<sup>2</sup> remnant habitat

To reach Aichi Target of 17%

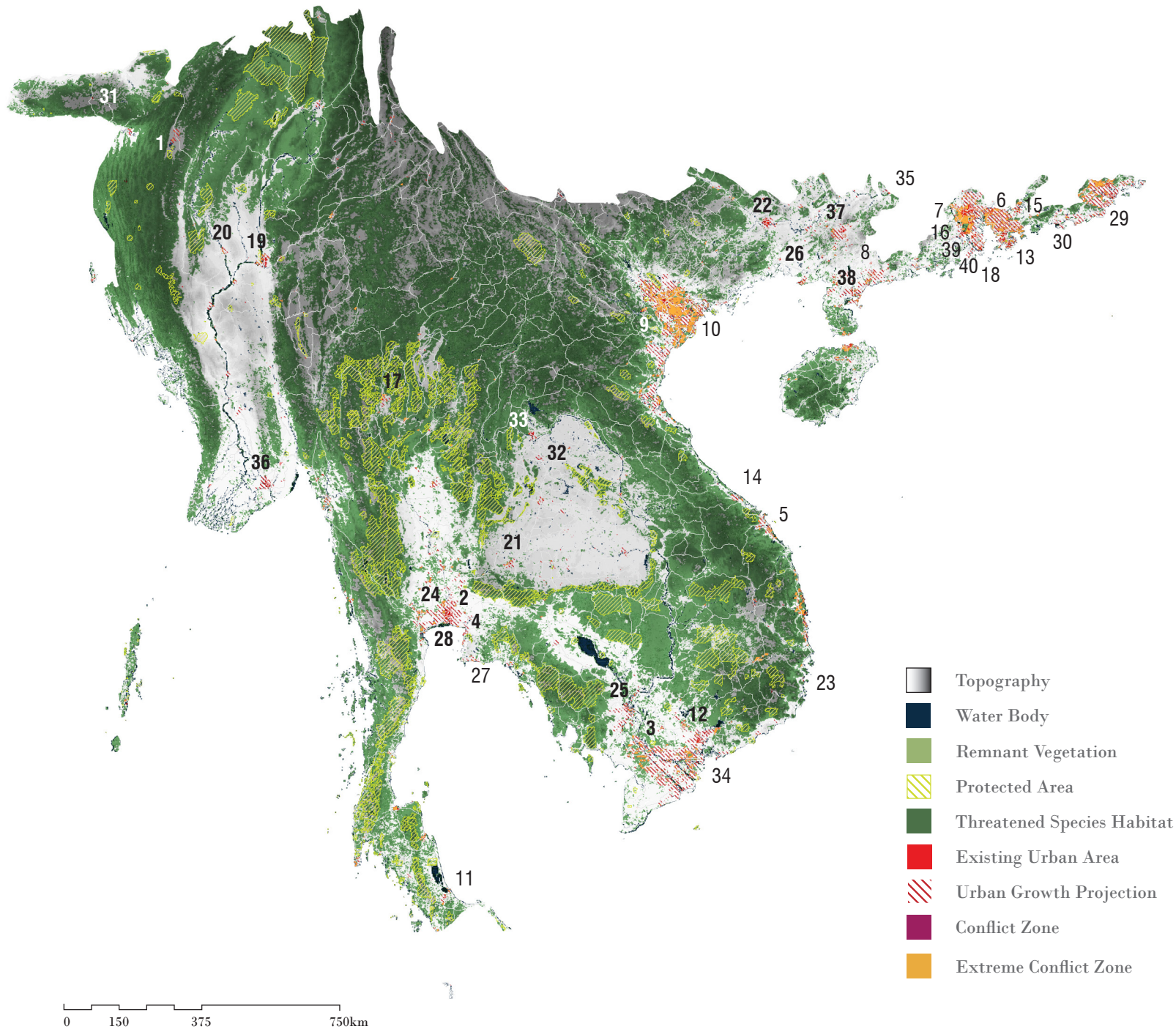


+1,835 km<sup>2</sup> protected areas



# INDO-BURMA | CONFLICTS

Conflicts between 2030 projected urban growth areas and threatened species habitats



0 150 375 750km



104,563,000 Population

2015 URBAN POPULATION

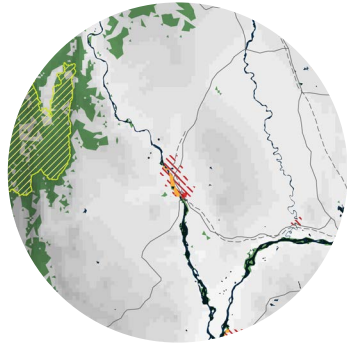
138,013,000  
2030 URBAN POPULATION

151  
THREATENED SPECIES

MAJOR CROPS  
rice, cassava, maize, vegetables

BIODIVERSITY THREATS  
Logging  
Conversion of Coastal Habitats  
Hydropower Dams  
Linear Infrastructure  
Urbanization and Economic Growth  
Mining  
Pollution  
Population and Migration

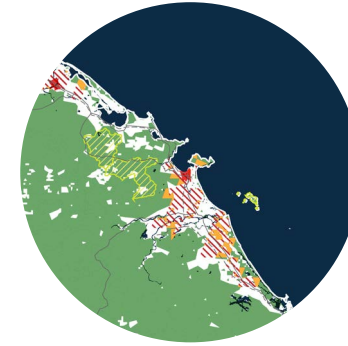




### 1. AIZAWL, INDIA

POPULATION PROJECTIONS:

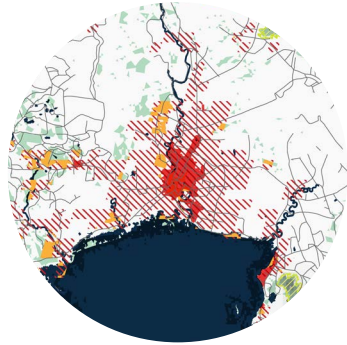
<u>2015:</u>	<u>2030:</u>
323,000	461,000



### 5. DA NANG, VIETNAM

POPULATION PROJECTIONS:

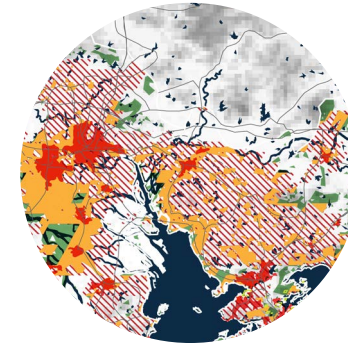
<u>2015:</u>	<u>2030:</u>
952,000	1,365,000



### 2. BANGKOK, THAILAND

POPULATION PROJECTIONS:

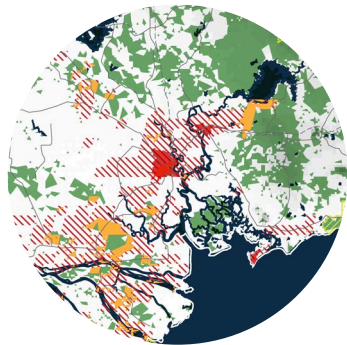
<u>2015:</u>	<u>2030:</u>
9,270,000	11,528,000



### 6. DONGGUAN, CHINA

POPULATION PROJECTIONS:

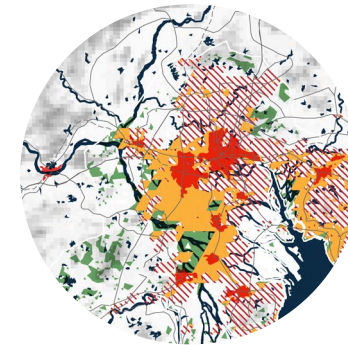
<u>2015:</u>	<u>2030:</u>
7,435,000	8,701,000



### 3. CAN THO, VIETNAM

POPULATION PROJECTIONS:

<u>2015:</u>	<u>2030:</u>
1,175,000	1,902,000

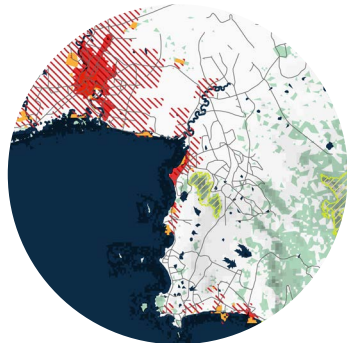


### 7. FOSHAN, CHINA

POPULATION PROJECTIONS:

<u>2015:</u>	<u>2030:</u>
7,036,000	8,353,000

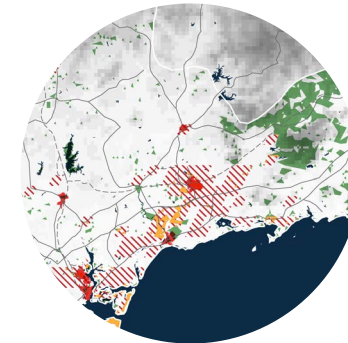
-  Topography
-  Water Body
-  Remnant Vegetation
-  Protected Area
-  Threatened Species Habitat
-  Existing Urban Area
-  Urban Growth Projection
-  Conflict Zone
-  Extreme Conflict Zone



### 4. CHON BURI, THAILAND

POPULATION PROJECTIONS:

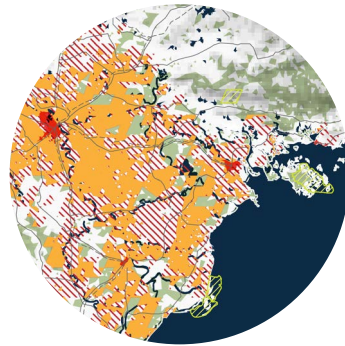
<u>2015:</u>	<u>2030:</u>
518,000	796,000



### 8. GAOZHOU, CHINA

POPULATION PROJECTIONS:

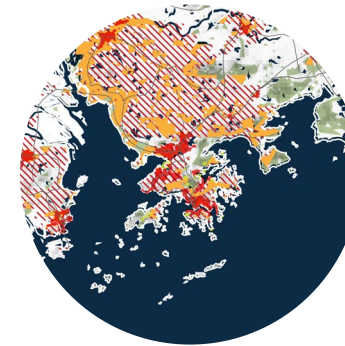
<u>2015:</u>	<u>2030:</u>
419,000	609,000



### 9. HANOI, VIETNAM

POPULATION PROJECTIONS:

2015:	2030:
3,629,000	5,498,000



### 13. HONG KONG / SHENZHEN / GUANGZHOU, CHINA

POPULATION PROJECTIONS:

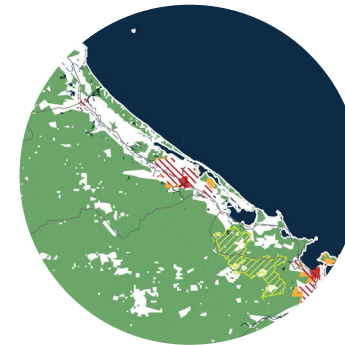
2015:	2030:
7,314,000	7,885,000
10,749,000	12,673,000
12,458,000	17,574,000



### 10. HAI PHONG, VIETNAM

POPULATION PROJECTIONS:

2015:	2030:
1,075,000	1,569,000



### 14. HUE, VIETNAM

POPULATION PROJECTIONS:

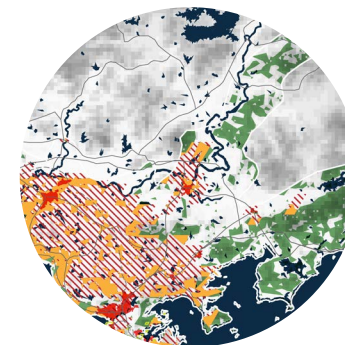
2015:	2030:
354,000	495,000



### 11. HAT YAI, THAILAND

POPULATION PROJECTIONS:

2015:	2030:
318,000	430,000

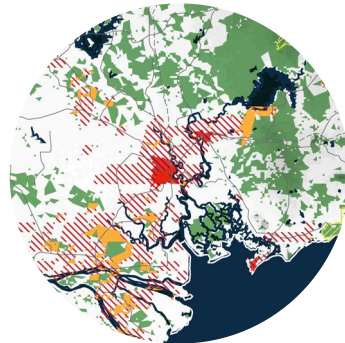


### 15. HUIZHOU, CHINA

POPULATION PROJECTIONS:

2015:	2030:
2,312,000	3,330,000

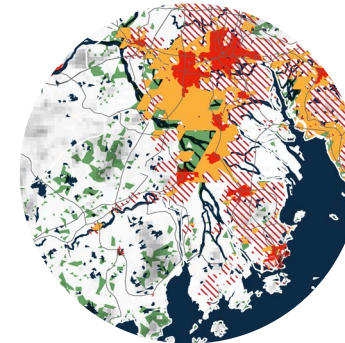
-  Topography
-  Water Body
-  Remnant Vegetation
-  Protected Area
-  Threatened Species Habitat
-  Existing Urban Area
-  Urban Growth Projection
-  Conflict Zone
-  Extreme Conflict Zone



### 12. HO CHI MINH CITY, VIETNAM

POPULATION PROJECTIONS:

2015:	2030:
7,298,000	10,200,000

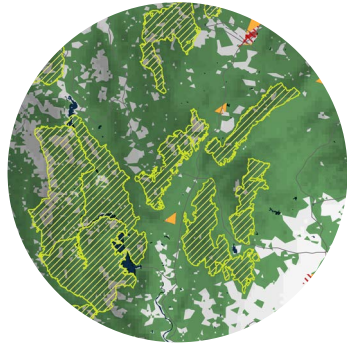


### 16. JIANGMEN, CHINA

POPULATION PROJECTIONS:

2015:	2030:
1,572,000	1,943,000

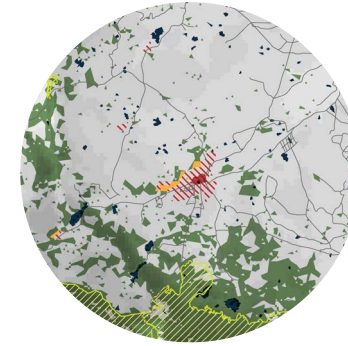




### 17. LAMPANG, THAILAND

POPULATION PROJECTIONS:

<u>2015:</u>	<u>2030:</u>
382,000	576,000



### 21. NAKHON RATCHASIMA, THAILAND

POPULATION PROJECTIONS:

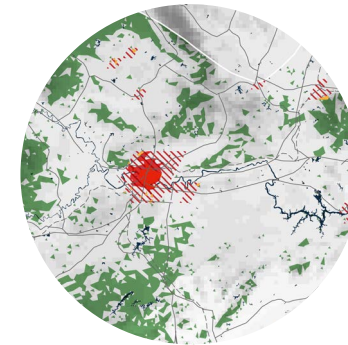
<u>2015:</u>	<u>2030:</u>
368,000	505,000



### 18. MACAO, CHINA

POPULATION PROJECTIONS:

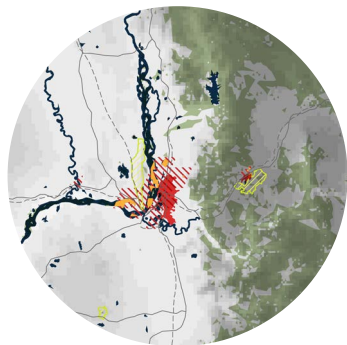
<u>2015:</u>	<u>2030:</u>
584,000	702,000



### 22. NANNING, CHINA

POPULATION PROJECTIONS:

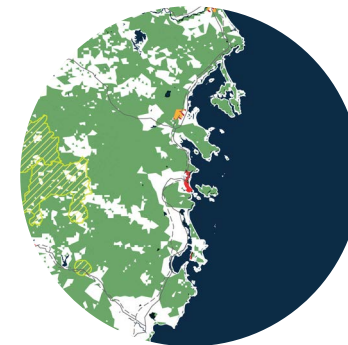
<u>2015:</u>	<u>2030:</u>
3,234,000	4,438,000



### 19. MANDALAY, BURMA

POPULATION PROJECTIONS:

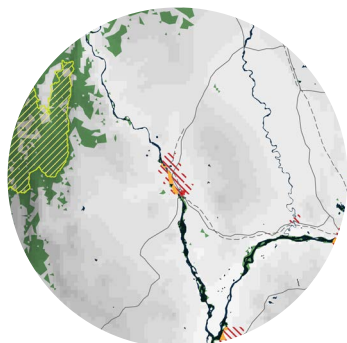
<u>2015:</u>	<u>2030:</u>
1,167,000	1,654,000



### 23. NHA TRANG, VIETNAM

POPULATION PROJECTIONS:

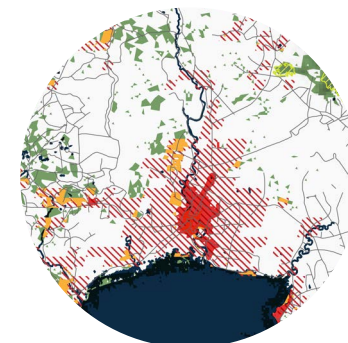
<u>2015:</u>	<u>2030:</u>
313,000	414,000



### 20. MONYWA, MYANMAR

POPULATION PROJECTIONS:

<u>2015:</u>	<u>2030:</u>
478,000	748,000



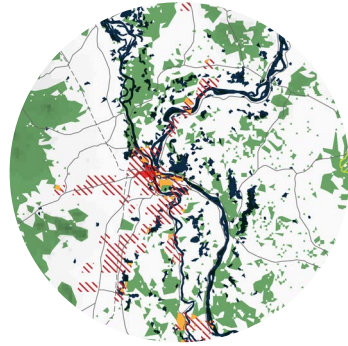
### 24. NONTHABURI, THAILAND

POPULATION PROJECTIONS:

<u>2015:</u>	<u>2030:</u>
409,000	526,000

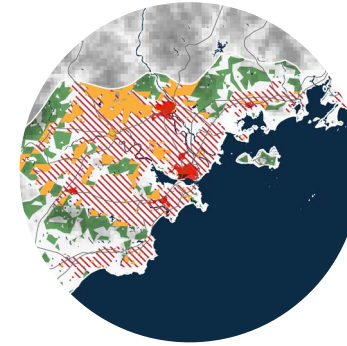
-  Topography
-  Water Body
-  Remnant Vegetation
-  Protected Area
-  Threatened Species Habitat
-  Existing Urban Area
-  Urban Growth Projection
-  Conflict Zone
-  Extreme Conflict Zone





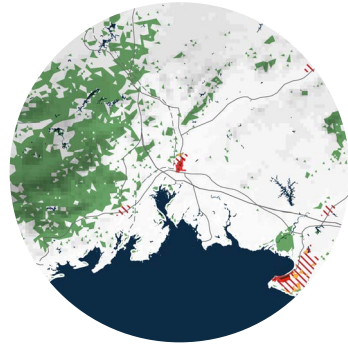
**25. PHNOM PENH, CAMBODIA**

POPULATION PROJECTIONS:  
2015:            2030:  
 1,731,000        2,584,000



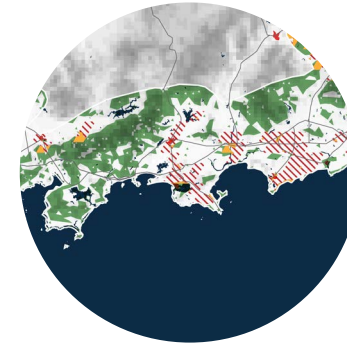
**29. SHANTOU, CHINA**

POPULATION PROJECTIONS:  
2015:            2030:  
 3,949,000        4,899,000



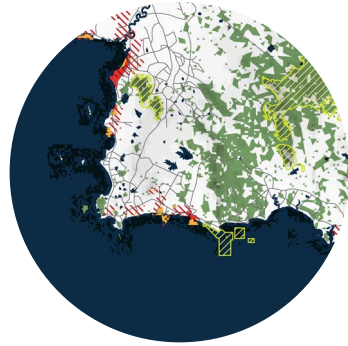
**26. QINZHOU, CHINA**

POPULATION PROJECTIONS:  
2015:            2030:  
 557,000            742,000



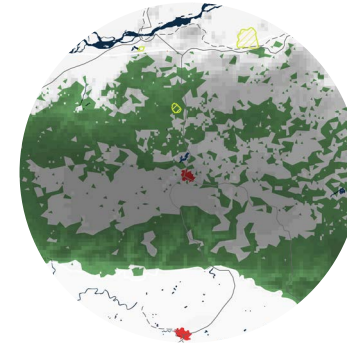
**30. SHANWEI, CHINA**

POPULATION PROJECTIONS:  
2015:            2030:  
 397,000            504,000



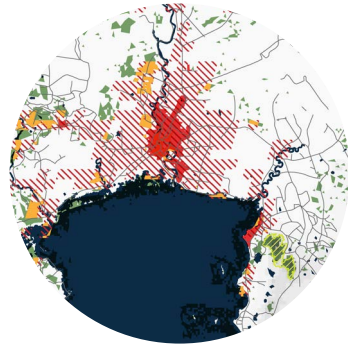
**27. RAYONG, THAILAND**

POPULATION PROJECTIONS:  
2015:            2030:  
 332,000            527,000



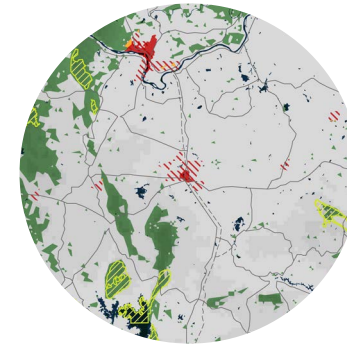
**31. SHILLONG, INDIA**

POPULATION PROJECTIONS:  
2015:            2030:  
 399,000            578,000



**28. SAMUT PRAKAN, THAILAND**

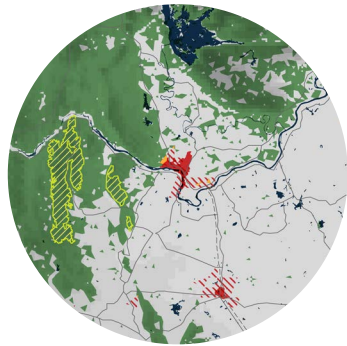
POPULATION PROJECTIONS:  
2015:            2030:  
 1,814,000        3,139,000



**32. UDON THANI, THAILAND**

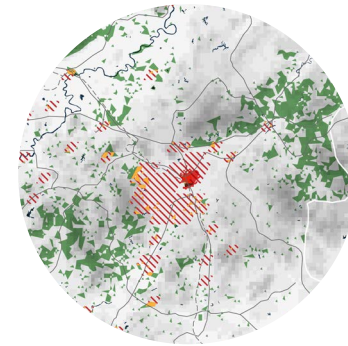
POPULATION PROJECTIONS:  
2015:            2030:  
 526,000            772,000

-  Topography
-  Water Body
-  Remnant Vegetation
-  Protected Area
-  Threatened Species Habitat
-  Existing Urban Area
-  Urban Growth Projection
-  Conflict Zone
-  Extreme Conflict Zone



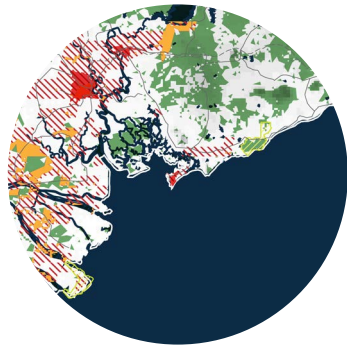
**33. VIENTIANE, LAO PEOPLE'S DEMOCRATIC REPUBLIC**

POPULATION PROJECTIONS:  
2015:            2030:  
 997,000            1,782,000



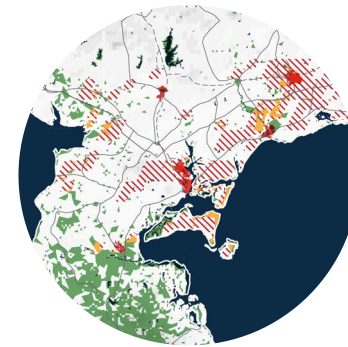
**37. YULIN, GUANGXI, CHINA**

POPULATION PROJECTIONS:  
2015:            2030:  
 577,000            718,000



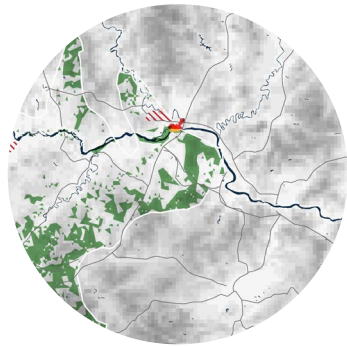
**34. VUNGTAU, VIETNAM**

POPULATION PROJECTIONS:  
2015:            2030:  
 351,000            512,000



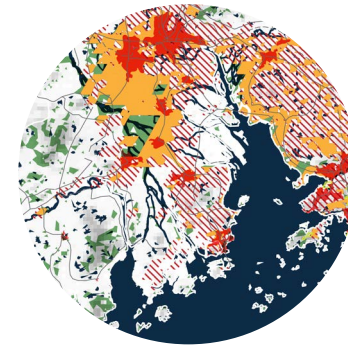
**38. ZHANJIANG, CHINA**

POPULATION PROJECTIONS:  
2015:            2030:  
 1,149,000            1,476,000



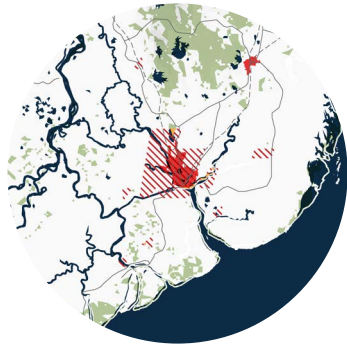
**35. WUZHOU, CHINA**

POPULATION PROJECTIONS:  
2015:            2030:  
 604,000            802,000



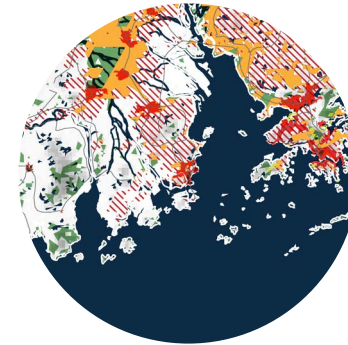
**39. ZHONGSHAN, CHINA**

POPULATION PROJECTIONS:  
2015:            2030:  
 3,691,000            5,518,000



**36. YANGON, BURMA**

POPULATION PROJECTIONS:  
2015:            2030:  
 4,802,000            6,578,000



**40. ZHUHAI, CHINA**

POPULATION PROJECTIONS:  
2015:            2030:  
 1,542,000            2,003,000

-  Topography
-  Water Body
-  Remnant Vegetation
-  Protected Area
-  Threatened Species Habitat
-  Existing Urban Area
-  Urban Growth Projection
-  Conflict Zone
-  Extreme Conflict Zone