

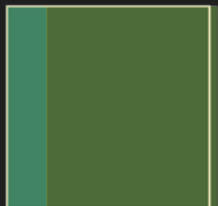
# GUINEAN FORESTS OF WEST AFRICA

626,397 km<sup>2</sup>



## BIODIVERSITY TARGET

2020 TARGET: 17% protected



2015: 17.7% PROTECTED

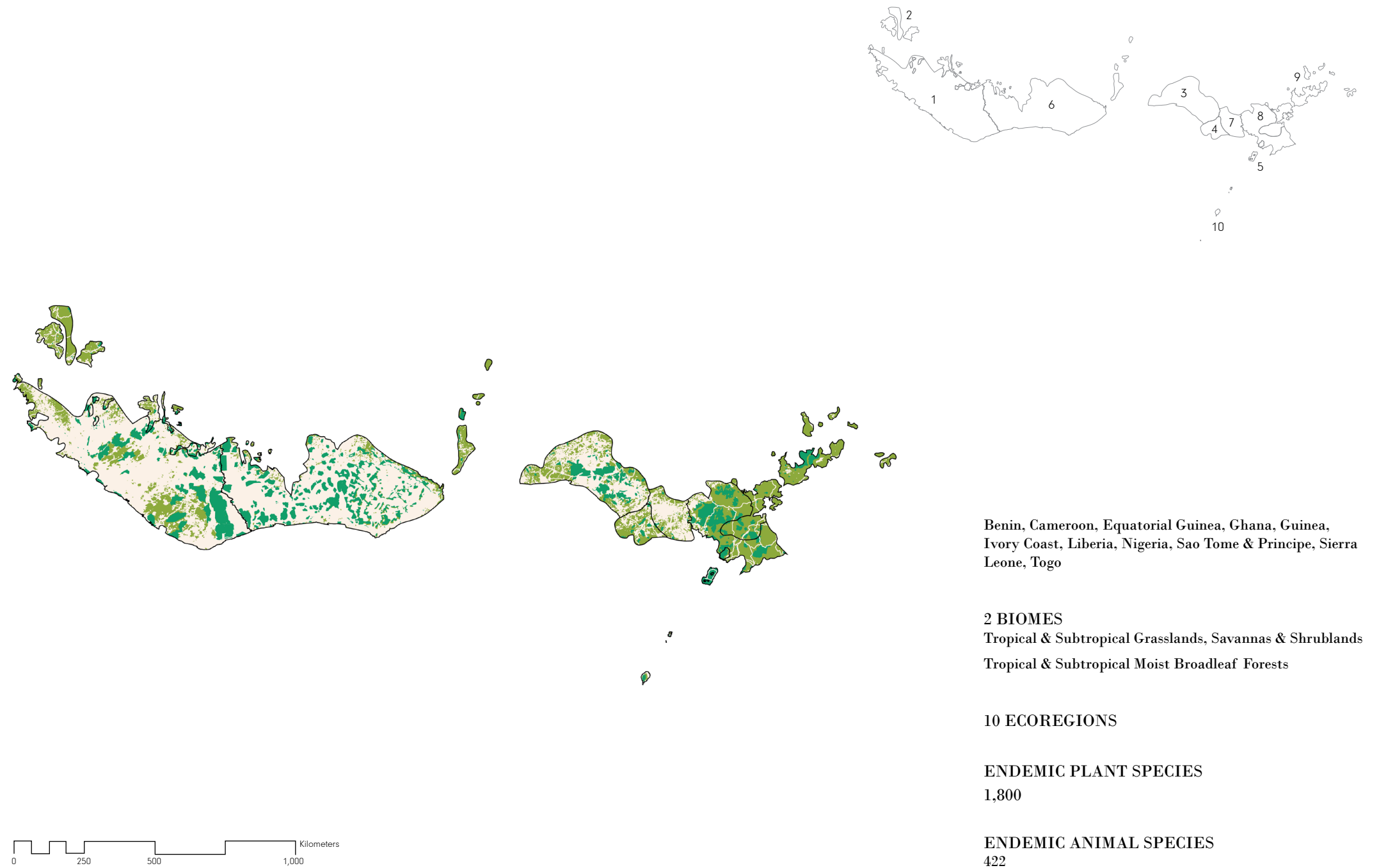
3.3% I-IV  
.1% V-VI  
14.3% NA

- Guinean Forests of West Africa Hotspot
- Neighboring Hotspot
- Protected Area (IUCN Category I-IV)
- Protected Area (IUCN Category V-VI)
- Protected Area (IUCN Category NA)
- Urban Area
- Agriculture (0-100% landuse)
- Roads
- Railroads



# GUINEAN FORESTS OF WEST AFRICA ECOREGIONS

Shortfall Assessment to reach Target of 17% protected land in each terrestrial ecoregion

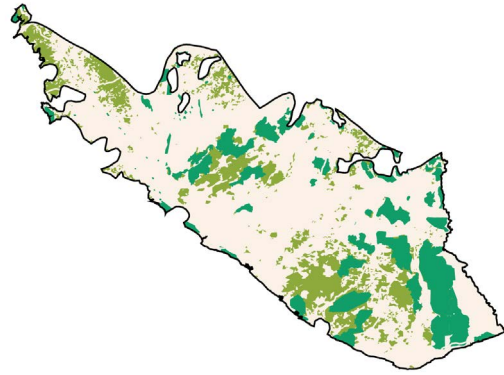


### 1. Western Guinean Lowland Forests

16,577 km<sup>2</sup> remnant habitat

To reach Aichi Target of 17%

+3,885 km<sup>2</sup> protected areas

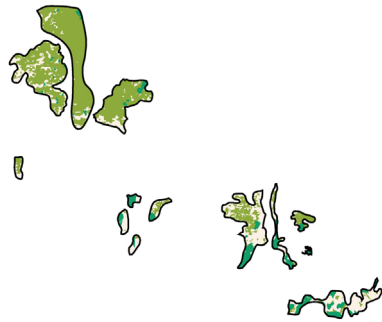


### 2. Guinean Montane Forests

16,766 km<sup>2</sup> remnant habitat

To reach Aichi Target of 17%

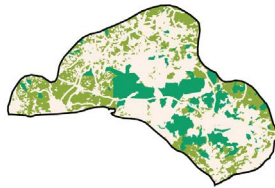
+2,100 km<sup>2</sup> protected areas



### 3. Nigerian Lowland Forests

15,958 km<sup>2</sup> remnant habitat

Target reached



### 4. Niger Delta Swamp Forests

8,098 km<sup>2</sup> remnant habitat

To reach Aichi Target of 17%

+1,326 km<sup>2</sup> protected areas



### 5. Mount Cameroon & Bioko Montane Forests

320 km<sup>2</sup> remnant habitat

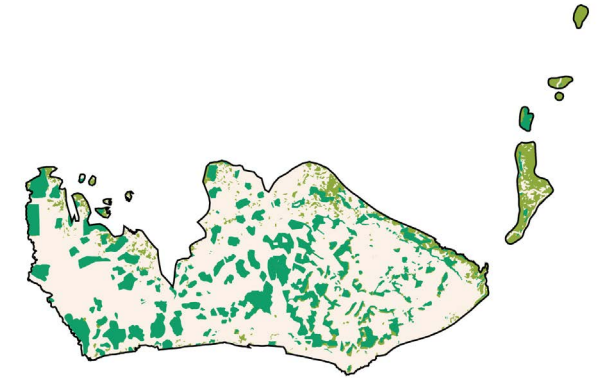
Target reached



### 6. Eastern Guinean Forests

17,858 km<sup>2</sup> remnant habitat

Target reached



### 7. Cross Niger Transition Forests

7,309 km<sup>2</sup> remnant habitat

To reach Aichi Target of 17%

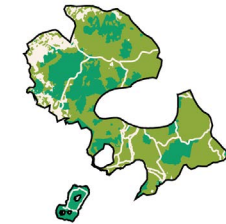
+3,001 km<sup>2</sup> protected areas



### 8. Cross-Sanaga-Bioko Coastal Forests

36,171 km<sup>2</sup> remnant habitat

Target reached

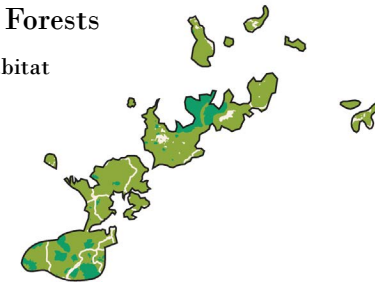


### 9. Cameroonian Highlands Forests

31,875 km<sup>2</sup> remnant habitat

To reach Aichi Target of 17%

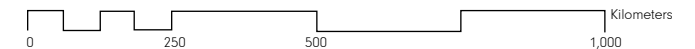
+1,219 km<sup>2</sup> protected areas



### 10. Sao Tome & Principe Moist Lowland Forests

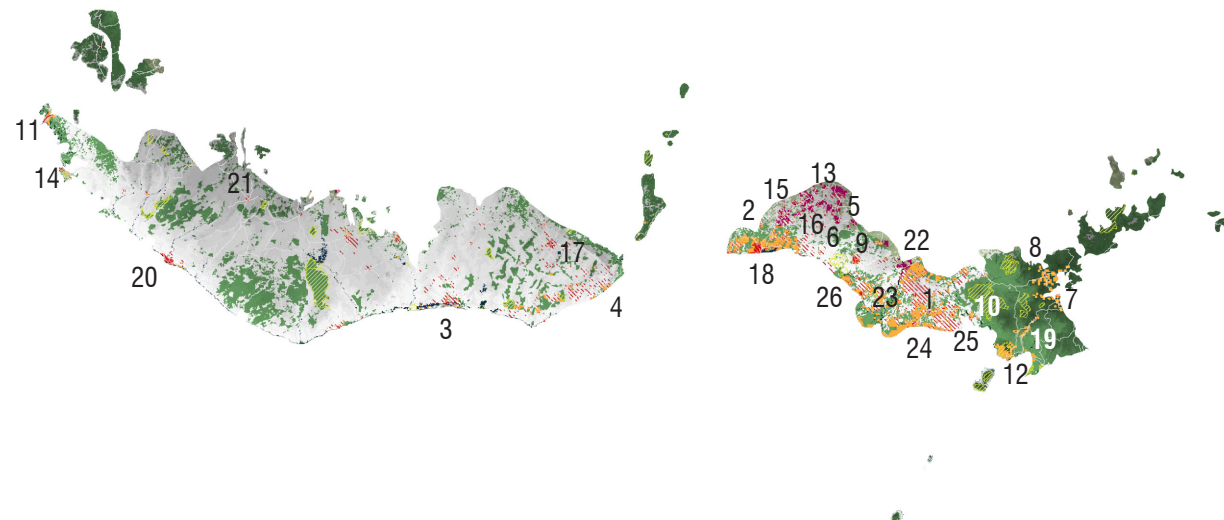
597 km<sup>2</sup> remnant habitat

Target reached

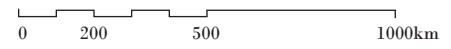


# GUINEAN FORESTS OF WEST AFRICA | CONFLICTS

Conflicts between 2030 projected urban growth areas and threatened species habitats



- Topography
- Water Body
- Remnant Vegetation
- Protected Area
- Threatened Species Habitat
- Existing Urban Area
- Urban Growth Projection
- Conflict Zone
- Extreme Conflict Zone



**40,128,000 Population**

2015 URBAN POPULATION

70,979,000  
2030 URBAN POPULATION

136  
THREATENED SPECIES

MAJOR CROPS  
maize, rice, cassava, oil palm fruit

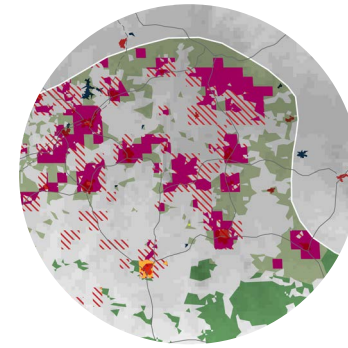
BIODIVERSITY THREATS  
Armed/Political Conflict  
Forest Loss and Fragmentation  
Mining



### 1. ABA, NIGERIA

POPULATION PROJECTIONS:

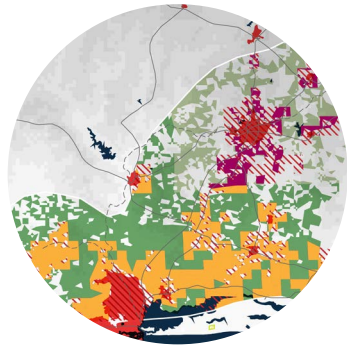
<u>2015:</u>	<u>2030:</u>
944,000	1,675,000



### 5. ADO-EKITI, NIGERIA

POPULATION PROJECTIONS:

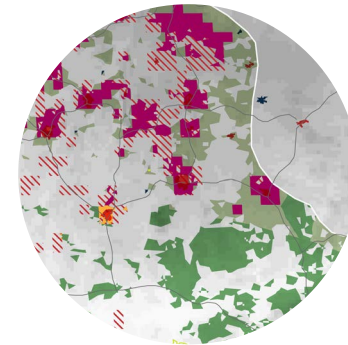
<u>2015:</u>	<u>2030:</u>
402,000	740,000



### 2. ABEOKUTA, NIGERIA

POPULATION PROJECTIONS:

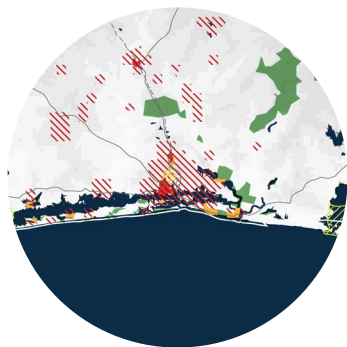
<u>2015:</u>	<u>2030:</u>
495,000	837,000



### 6. AKURE, NIGERIA

POPULATION PROJECTIONS:

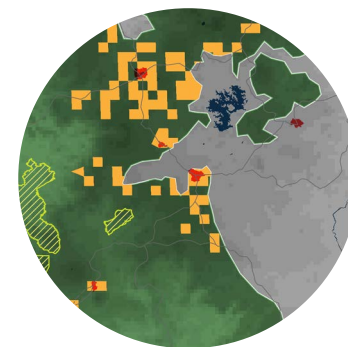
<u>2015:</u>	<u>2030:</u>
556,000	1,025,000



### 3. ABIDJAN, IVORY COAST

POPULATION PROJECTIONS:

<u>2015:</u>	<u>2030:</u>
4,860,000	7,773,000



### 7. BAFOUSSAM, CAMEROON

POPULATION PROJECTIONS:

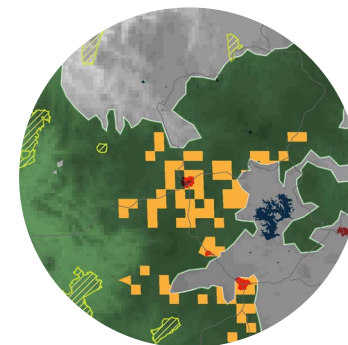
<u>2015:</u>	<u>2030:</u>
350,000	564,000



### 4. ACCRA, GHANA

POPULATION PROJECTIONS:

<u>2015:</u>	<u>2030:</u>
2,277,000	3,262,000

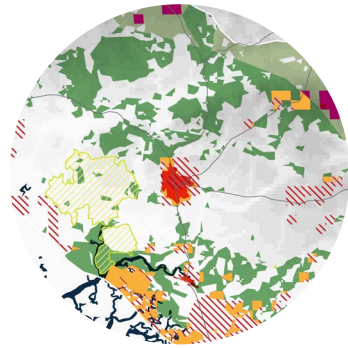


### 8. BAMENDA, CAMEROON

POPULATION PROJECTIONS:

<u>2015:</u>	<u>2030:</u>
424,000	703,000

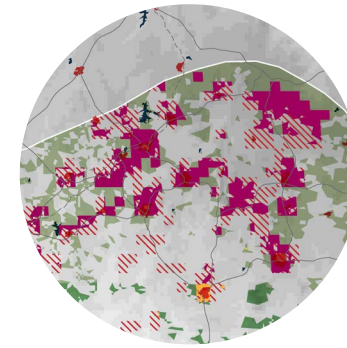




### 9. BENIN CITY, NIGERIA

POPULATION PROJECTIONS:

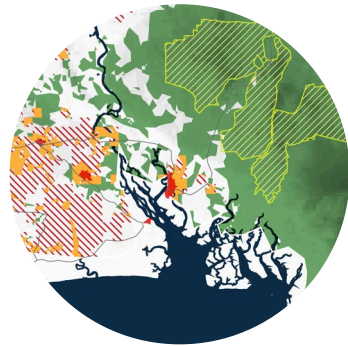
2015:	2030:
1,496,000	2,667,000



### 13. EFFON ALAIYE, NIGERIA

POPULATION PROJECTIONS:

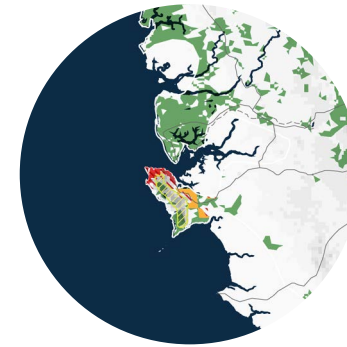
2015:	2030:
329,000	594,000



### 10. CALABAR, NIGERIA

POPULATION PROJECTIONS:

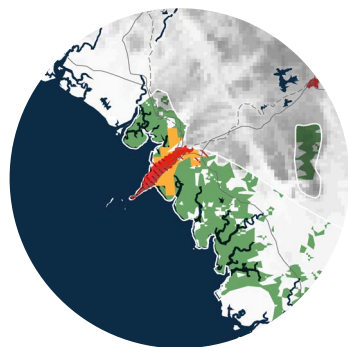
2015:	2030:
467,000	886,000



### 14. FREETOWN, SIERRA LEONE

POPULATION PROJECTIONS:

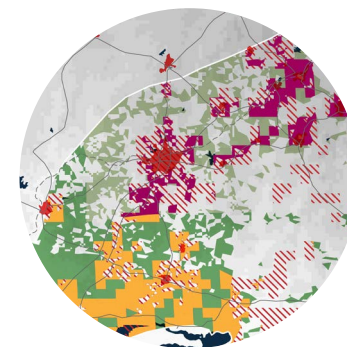
2015:	2030:
1,007,000	1,470,000



### 11. CONAKRY, GUINEA

POPULATION PROJECTIONS:

2015:	2030:
1,936,000	3,134,000

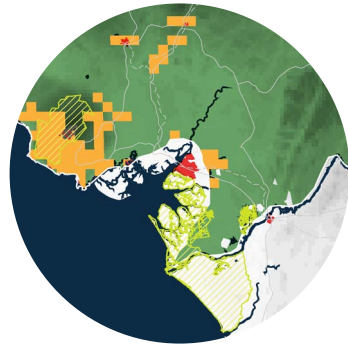


### 15. IBADAN, NIGERIA

POPULATION PROJECTIONS:

2015:	2030:
3,160,000	5,499,000

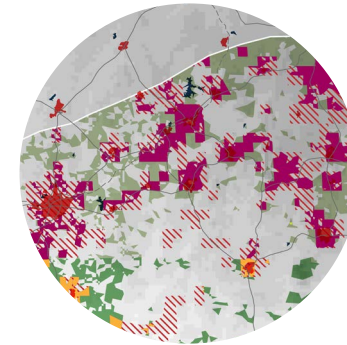
-  Topography
-  Water Body
-  Remnant Vegetation
-  Protected Area
-  Threatened Species Habitat
-  Existing Urban Area
-  Urban Growth Projection
-  Conflict Zone
-  Extreme Conflict Zone



### 12. DOUALA, CAMEROON

POPULATION PROJECTIONS:

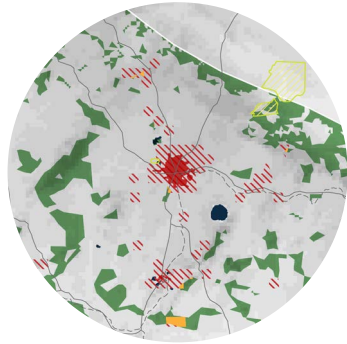
2015:	2030:
2,943,000	4,774,000



### 16. IFE, NIGERIA

POPULATION PROJECTIONS:

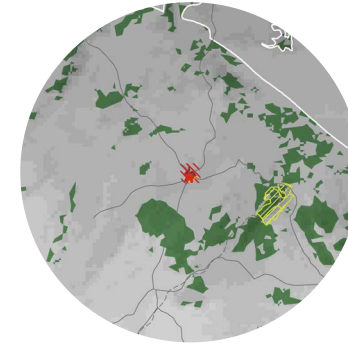
2015:	2030:
331,000	583,000



**17. KUMASI, GHANA**

POPULATION PROJECTIONS:

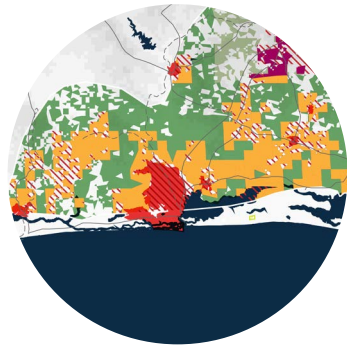
<u>2015:</u>	<u>2030:</u>
2,599,000	4,215,000



**21. NZEREKORE, GUINEA**

POPULATION PROJECTIONS:

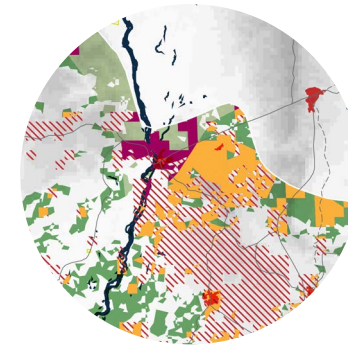
<u>2015:</u>	<u>2030:</u>
346,000	642,000



**18. LAGOS, NIGERIA**

POPULATION PROJECTIONS:

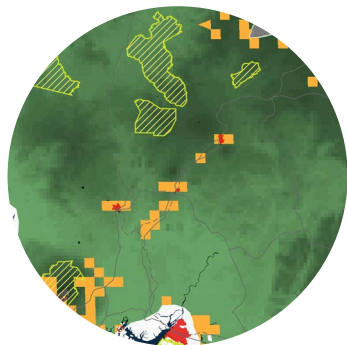
<u>2015:</u>	<u>2030:</u>
13,123,000	24,239,000



**22. ONITSHA, NIGERIA**

POPULATION PROJECTIONS:

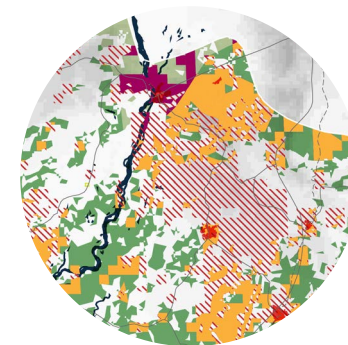
<u>2015:</u>	<u>2030:</u>
1,109,000	2,147,000



**19. LOUM, CAMEROON**

POPULATION PROJECTIONS:

<u>2015:</u>	<u>2030:</u>
362,000	646,000



**23. OWERRI, NIGERIA**

POPULATION PROJECTIONS:

<u>2015:</u>	<u>2030:</u>
716,000	1,337,000

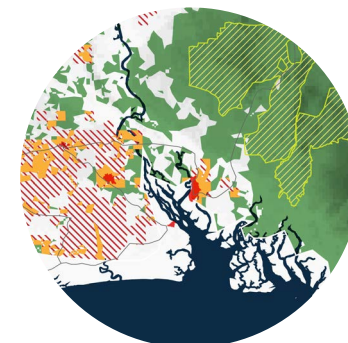
-  Topography
-  Water Body
-  Remnant Vegetation
-  Protected Area
-  Threatened Species Habitat
-  Existing Urban Area
-  Urban Growth Projection
-  Conflict Zone
-  Extreme Conflict Zone



**20. MONROVIA, LIBERIA**

POPULATION PROJECTIONS:

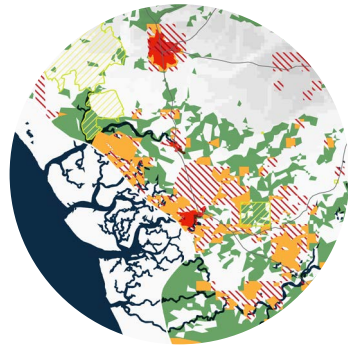
<u>2015:</u>	<u>2030:</u>
1,264,000	2,032,000



**24. PORT HARCOURT, NIGERIA**

POPULATION PROJECTIONS:

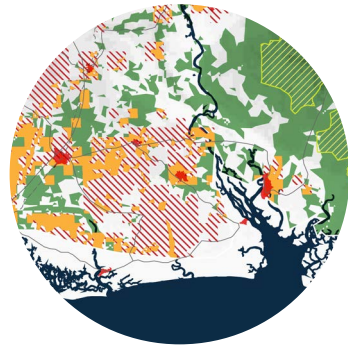
<u>2015:</u>	<u>2030:</u>
2,343,000	4,562,000



## 25. WARRI, NIGERIA

POPULATION PROJECTIONS:

<u>2015:</u>	<u>2030:</u>
663,000	1,298,000



## 26. UYO, NIGERIA

POPULATION PROJECTIONS:

<u>2015:</u>	<u>2030:</u>
847,000	1,709,000

