

EAST MELANESIAN ISLANDS

101,227 km²

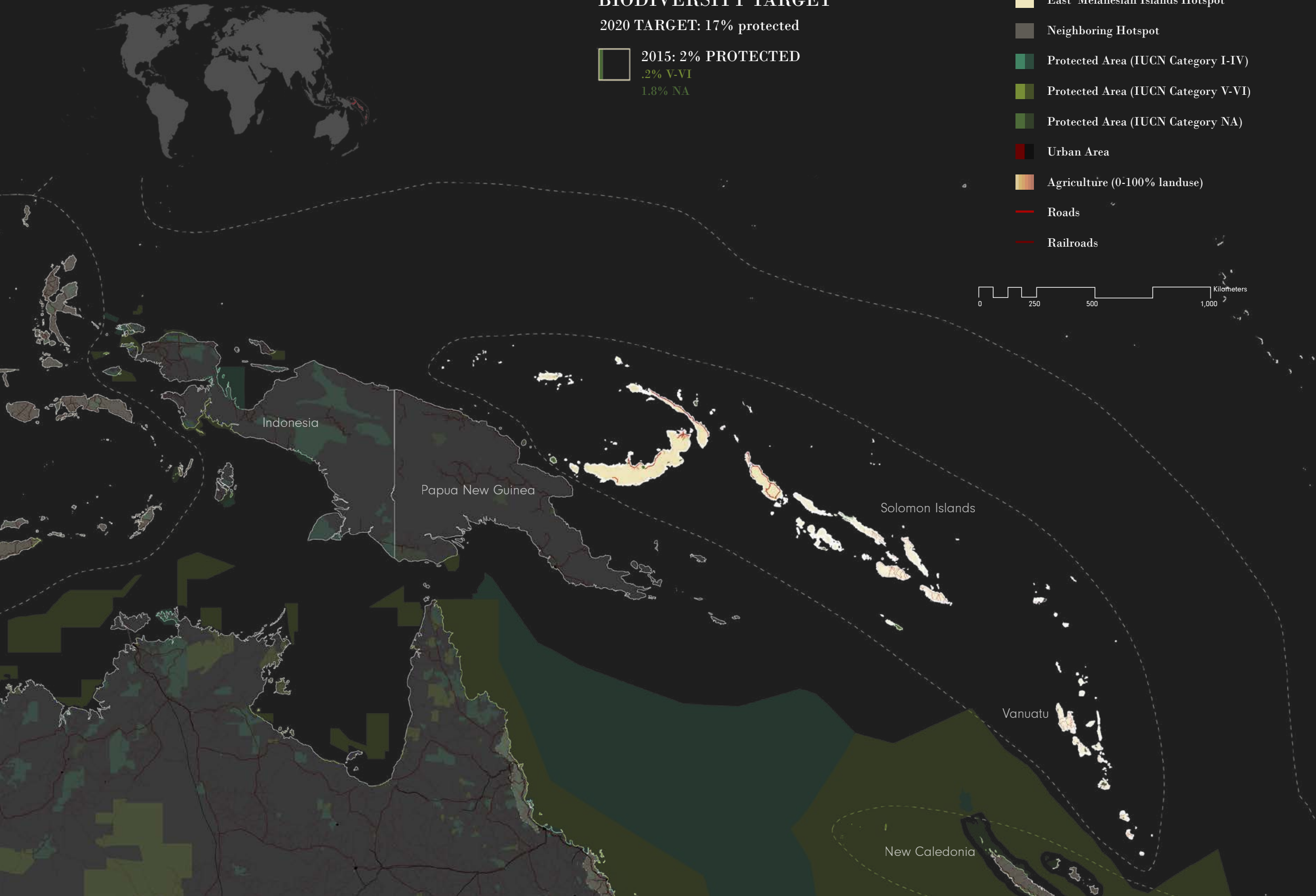
BIODIVERSITY TARGET

2020 TARGET: 17% protected

2015: 2% PROTECTED
.2% V-VI
1.8% NA

- East Melanesian Islands Hotspot
- Neighboring Hotspot
- Protected Area (IUCN Category I-IV)
- Protected Area (IUCN Category V-VI)
- Protected Area (IUCN Category NA)
- Urban Area
- Agriculture (0-100% landuse)
- Roads
- Railroads

0 250 500 1,000 Kilometers



EAST MELANESIAN ISLANDS ECOREGIONS

Shortfall Assessment to reach Target of 17% protected land in each terrestrial ecoregion



Papua New Guinea, Solomon Islands, Vanuatu

1 BIOME
Tropical & Subtropical Moist Broadleaf Forests

5 ECOREGIONS

ENDEMIC PLANT SPECIES
3,000

ENDEMIC ANIMAL SPECIES
283

1. New Britain New Ireland Lowland Rain Forests

23,135 km² remnant habitat

To reach Aichi Target of 17%

+ 4,992 km² protected areas

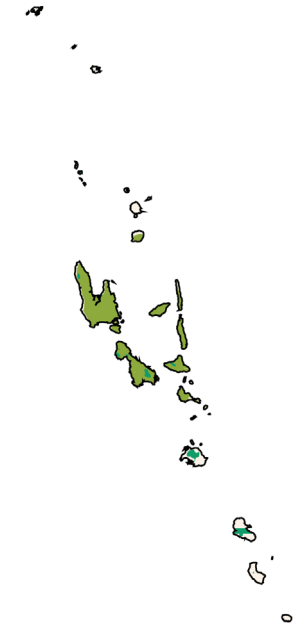


4. Vanuatu Rain Forests

7,472 km² remnant habitat

To reach Aichi Target of 17%

+ 1,343 km² protected areas

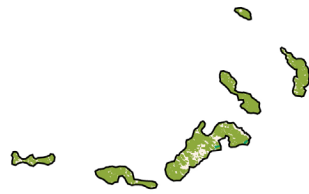


2. New Britain New Ireland Montane Rain Forests

9,952 km² remnant habitat

To reach Aichi Target of 17%

+ 2,006 km² protected areas



5. Solomon Islands Rain Forests

33,089 km² remnant habitat

To reach Aichi Target of 17%

+ 5,319 km² protected areas

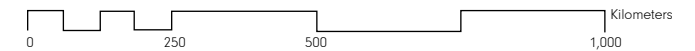


3. Admiralty Islands Lowland Rain Forests

1,421 km² remnant habitat

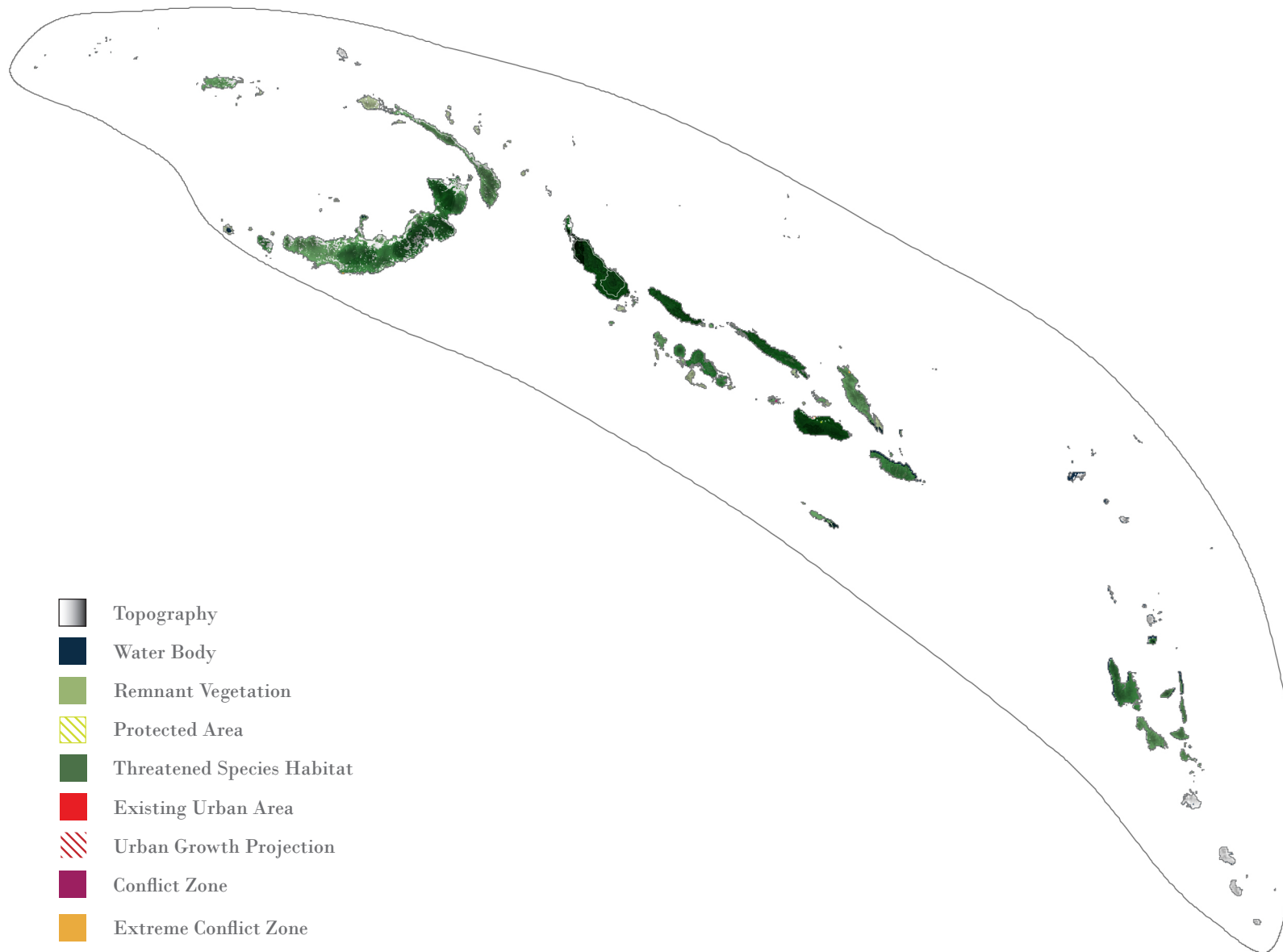
To reach Aichi Target of 17%

+ 310 km² protected areas



EAST MELANESIAN ISLANDS | CONFLICTS

Conflicts between 2030 projected urban growth areas and threatened species habitats



Not Applicable

NO CITY OVER 300,000 POPULATION
IN 2015

30
THREATENED SPECIES

MAJOR CROPS
fruits, nuts

BIODIVERSITY THREATS
Deforestation
Mining