

# CALIFORNIA FLORISTIC PROVINCE

471,100 km<sup>2</sup>



## BIODIVERSITY TARGET

2020 TARGET: 17% protected



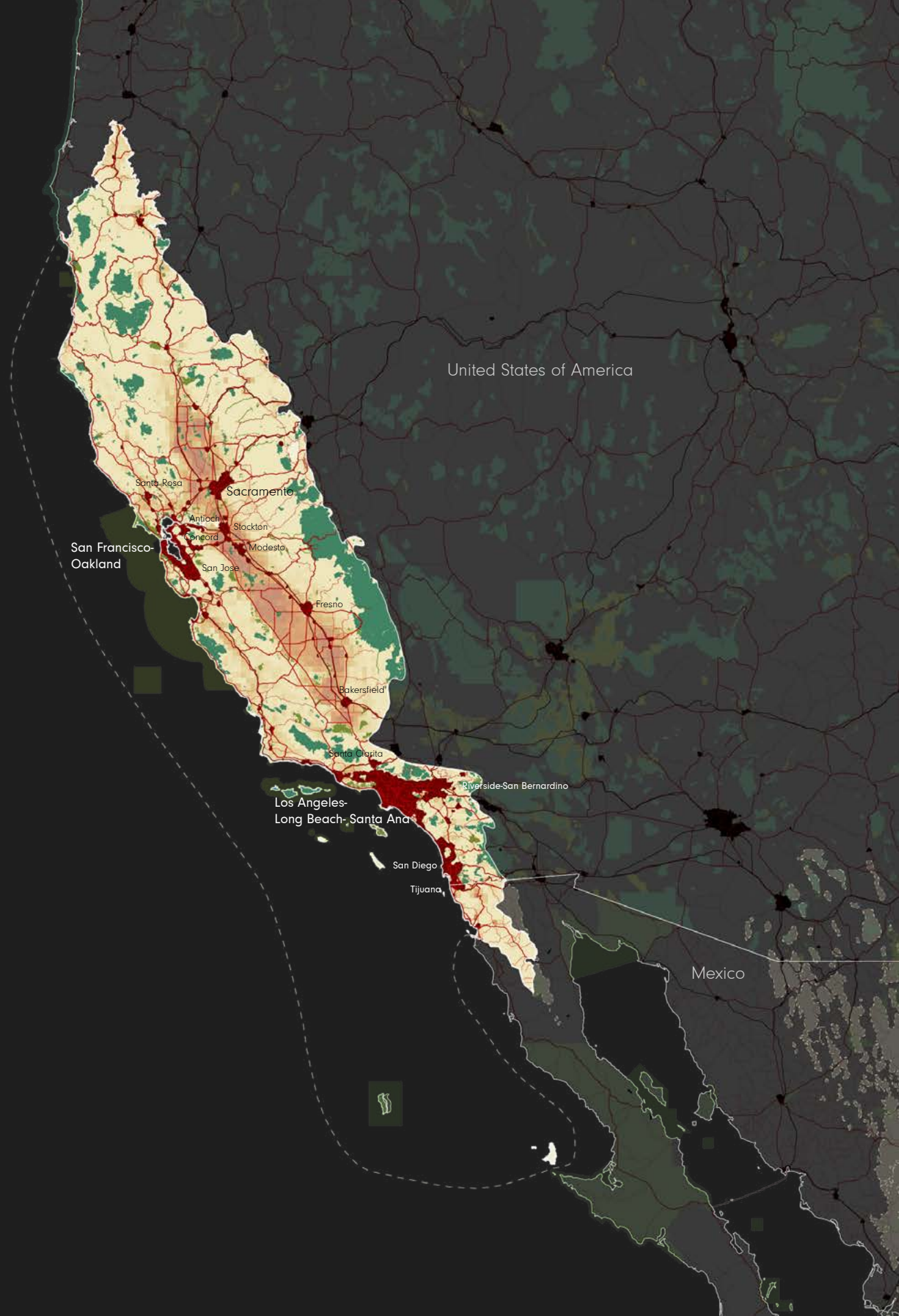
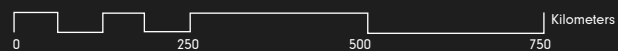
2015: 13.6% PROTECTED

11.3% I-IV

2.2% V-VI

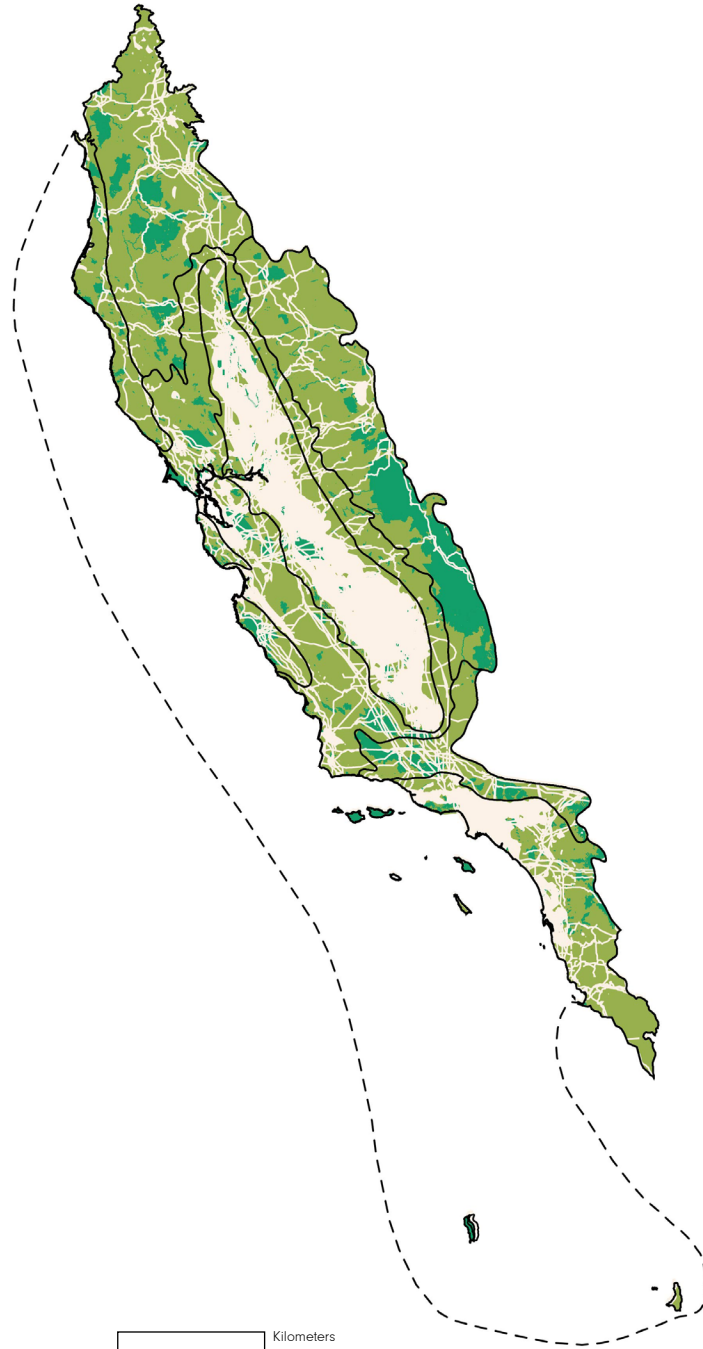
.1% NA

- Atlantic Forest Hotspot
- Neighboring Hotspot
- Protected Area (IUCN Category I-IV)
- Protected Area (IUCN Category V-VI)
- Protected Area (IUCN Category NA)
- Urban Area
- Agriculture (0-100% landuse)
- Roads
- Railroads



# CALIFORNIA FLORISTIC PROVINCE ECOREGIONS

Shortfall Assessment to reach Target of 17% protected land in each terrestrial ecoregion



Mexico, United States of America

## 3 BIOMES

Coniferous Forests

Grasslands, Savannas & Shrublands

Mediterranean Forests, Woodlands & Scrub

## 7 ECOREGIONS

## ENDEMIC PLANT SPECIES

2,124

## ENDEMIC ANIMAL SPECIES

70

### 1. Northern California Coastal Forests

9,793 km<sup>2</sup> remnant habitat

To reach Aichi Target of 17%

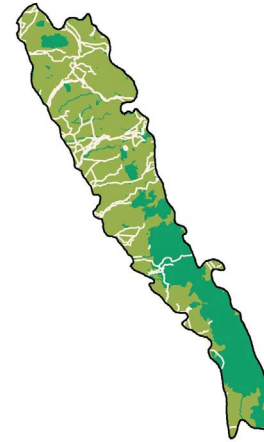
+ 962 km<sup>2</sup> protected land



### 4. Sierra Nevada Forests

26,210 km<sup>2</sup> remnant habitat

Target reached



### 5. California Central Valley Grasslands

15,415 km<sup>2</sup> remnant habitat

To reach Aichi Target of 17%

+ 12,020 km<sup>2</sup> protected areas

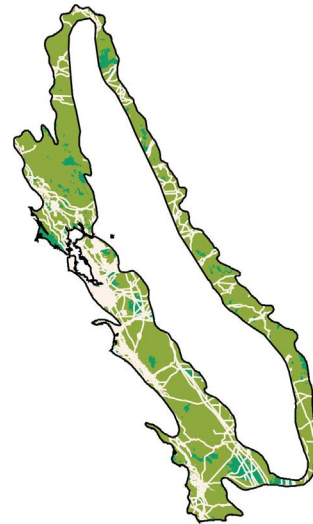


### 2. California Interior Chaparral & Woodlands

49,058 km<sup>2</sup> remnant habitat

To reach Aichi Target of 17%

+ 9,367 km<sup>2</sup> protected areas

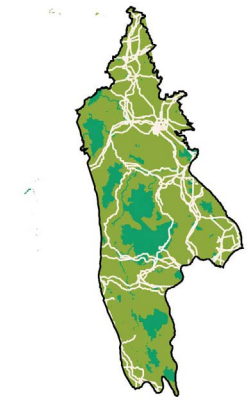


### 6. California Klamath Siskiyou Forests

35,638 km<sup>2</sup> remnant habitat

To reach Aichi Target of 17%

+ 2,235 km<sup>2</sup> protected areas

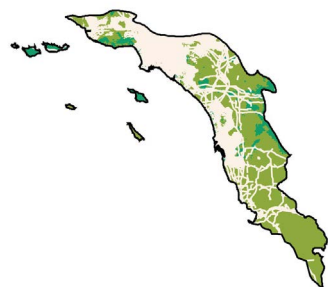


### 3. California Coastal Sage & Chaparral

22,521 km<sup>2</sup> remnant habitat

To reach Aichi Target of 17%

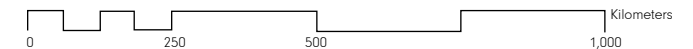
+ 4,219 km<sup>2</sup> protected areas



### 7. California Montane Chaparral & Woodlands

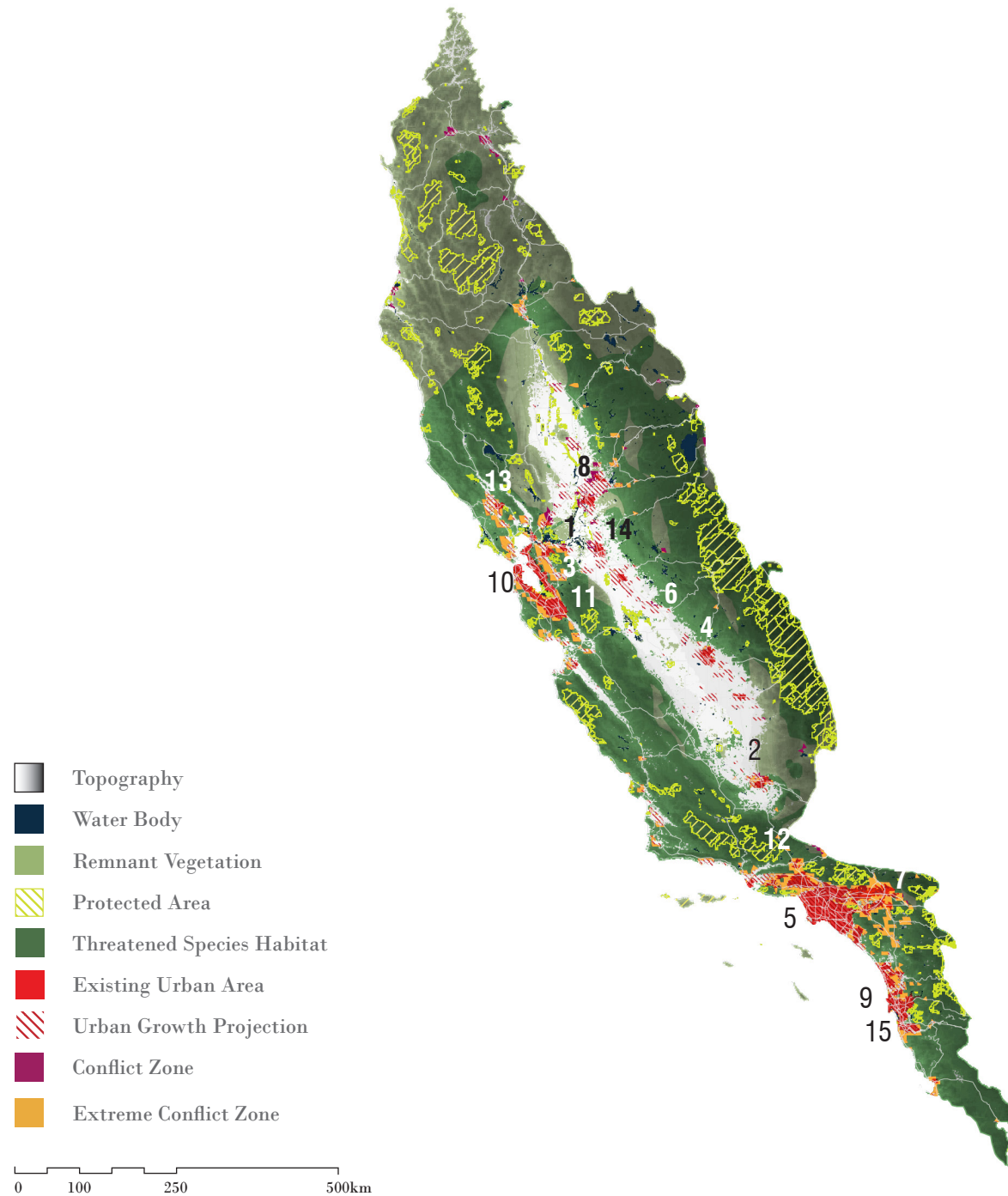
12,407 km<sup>2</sup> remnant habitat

Target reached



# CALIFORNIA FLORISTIC PROVINCE | CONFLICTS

Conflicts between 2030 projected urban growth areas and threatened species habitats



30,257,000 Population

2015 URBAN POPULATION

34,310,000

2030 URBAN POPULATION

22

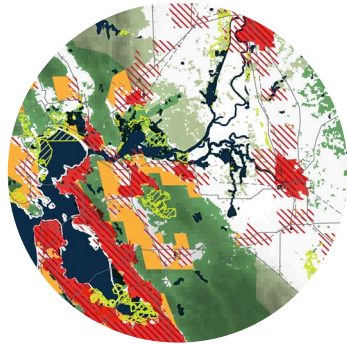
THREATENED SPECIES

MAJOR CROPS

cereal grains, hay, cotton, sugar cane, vegetables

BIODIVERSITY THREATS

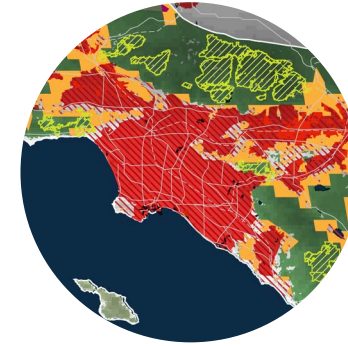
- Deforestation
- Urban Expansion and Industrialization
- Infrastructure
- Mining
- Pollution
- Habitat Encroachment
- Agricultural Expansion



**1. ANTIOCH, U.S.**

POPULATION PROJECTIONS:

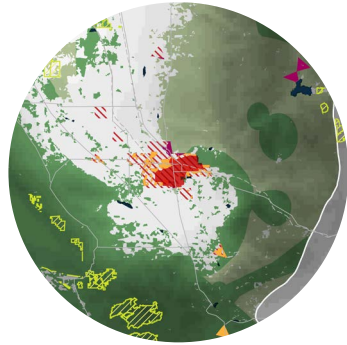
<u>2015:</u>	<u>2030:</u>
314,000	392,000



**5. LOS ANGELES, U.S.**

POPULATION PROJECTIONS:

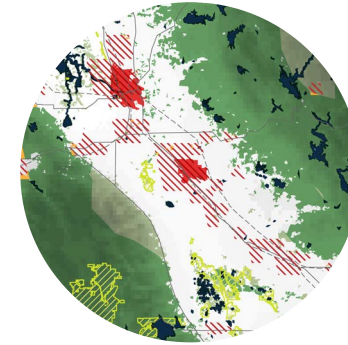
<u>2015:</u>	<u>2030:</u>
12,310,000	13,257,000



**2. BAKERSFIELD, U.S.**

POPULATION PROJECTIONS:

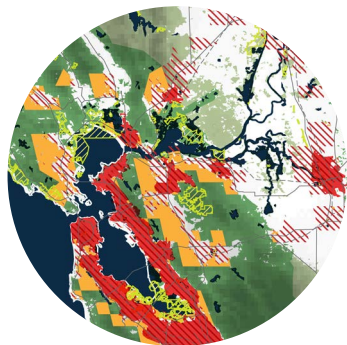
<u>2015:</u>	<u>2030:</u>
605,000	756,000



**6. MODESTO, MEXICO**

POPULATION PROJECTIONS:

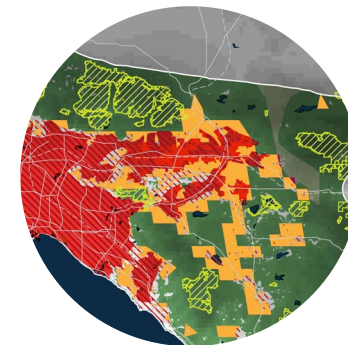
<u>2015:</u>	<u>2030:</u>
385,000	459,000



**3. CONCORD, U.S.**

POPULATION PROJECTIONS:

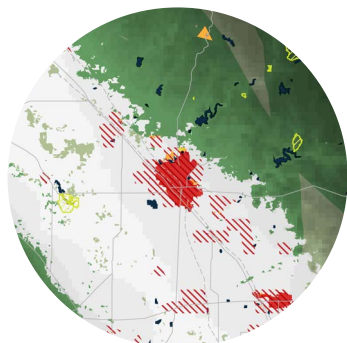
<u>2015:</u>	<u>2030:</u>
650,000	759,000



**7. RIVERSIDE, U.S.**

POPULATION PROJECTIONS:

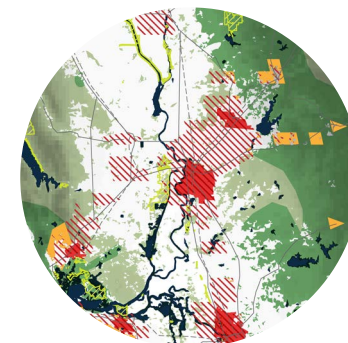
<u>2015:</u>	<u>2030:</u>
2,194,000	2,653,000



**4. FRESNO, U.S.**

POPULATION PROJECTIONS:

<u>2015:</u>	<u>2030:</u>
712,000	849,000

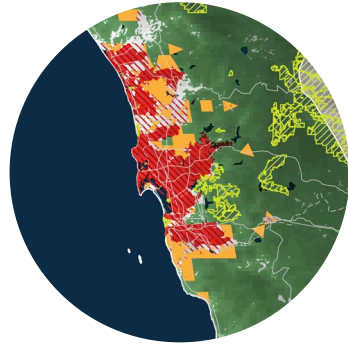


**8. SACRAMENTO, U.S.**

POPULATION PROJECTIONS:

<u>2015:</u>	<u>2030:</u>
1,920,000	2,294,000

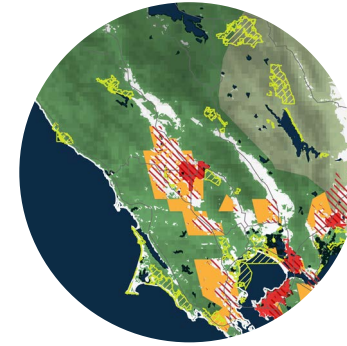
-  Topography
-  Water Body
-  Remnant Vegetation
-  Protected Area
-  Threatened Species Habitat
-  Existing Urban Area
-  Urban Growth Projection
-  Conflict Zone
-  Extreme Conflict Zone



**9. SAN DIEGO, U.S.**

POPULATION PROJECTIONS:

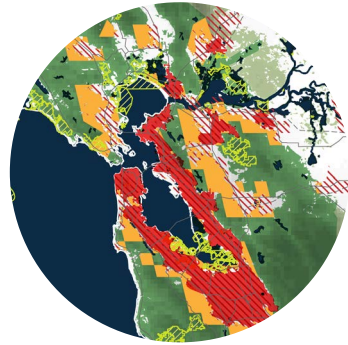
<u>2015:</u>	<u>2030:</u>
3,107,000	3,522,000



**13. SANTA ROSA, U.S.**

POPULATION PROJECTIONS:

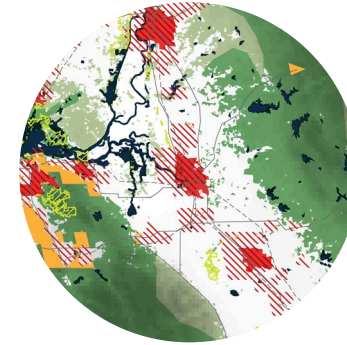
<u>2015:</u>	<u>2030:</u>
320,000	374,000



**10. SAN FRANCISCO, U.S.**

POPULATION PROJECTIONS:

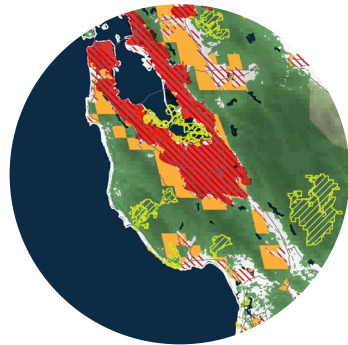
<u>2015:</u>	<u>2030:</u>
3,300,000	3,615,000



**14. STOCKTON, U.S.**

POPULATION PROJECTIONS:

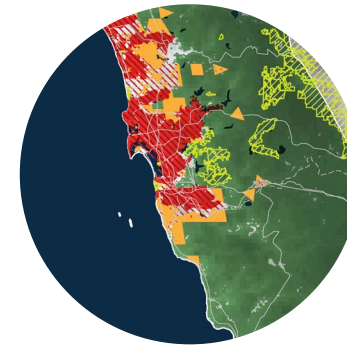
<u>2015:</u>	<u>2030:</u>
403,000	486,000



**11. SAN JOSE, U.S.**

POPULATION PROJECTIONS:

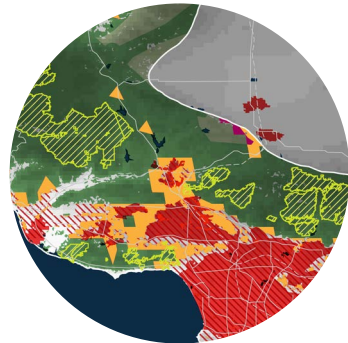
<u>2015:</u>	<u>2030:</u>
1,730,000	1,964,000



**15. TIJUANA, MEXICO**

POPULATION PROJECTIONS:

<u>2015:</u>	<u>2030:</u>
1,987,000	2,502,000



**12. SANTA CLARITA, U.S.**

POPULATION PROJECTIONS:

<u>2015:</u>	<u>2030:</u>
321,000	428,000

-  Topography
-  Water Body
-  Remnant Vegetation
-  Protected Area
-  Threatened Species Habitat
-  Existing Urban Area
-  Urban Growth Projection
-  Conflict Zone
-  Extreme Conflict Zone